



[Go to Product page](#)

Datasheet for ABIN7270097  
**anti-RBPMS antibody (AA 110-219)**

1 Image

Overview

Quantity:	100 µL
Target:	RBPMS
Binding Specificity:	AA 110-219
Reactivity:	Human
Host:	Rabbit
Clonality:	Polyclonal
Conjugate:	This RBPMS antibody is un-conjugated
Application:	Western Blotting (WB), Immunofluorescence (IF)

Product Details

Purpose:	RBPMS Rabbit pAb
Immunogen:	Recombinant fusion protein containing a sequence corresponding to amino acids 110-219 of human RBPMS (NP_001008712.1).
Sequence:	LVGTPNPSTP LPNTVPQFIA REPYELTVPA LYPSSPEVWA PYPLYP AELA PALPPAFTY PASLHAQCFS PEAKPNTPVF CPLLQQIRFV SGNVFTYQP TADQQRELPC
Isotype:	IgG
Cross-Reactivity:	Human, Mouse, Rat
Characteristics:	Polyclonal Antibodies
Purification:	Affinity purification

## Target Details

---

Target:	RBPM5
Alternative Name:	RBPM5 ( <a href="#">RBPM5 Products</a> )
Background:	This gene encodes a member of the RNA recognition motif family of RNA-binding proteins. The RNA recognition motif is between 80-100 amino acids in length and family members contain one to four copies of the motif. The RNA recognition motif consists of two short stretches of conserved sequence, as well as a few highly conserved hydrophobic residues. The encoded protein has a single, putative RNA recognition motif in its N-terminus. Alternative splicing results in multiple transcript variants encoding different isoforms.,RBPM5,HERMES,Epigenetics & Nuclear Signaling,RNA Binding,Signal Transduction,RBPM5
Molecular Weight:	15kDa/17kDa/21kDa/22kDa/24kDa
Gene ID:	11030
UniProt:	<a href="#">Q93062</a>

## Application Details

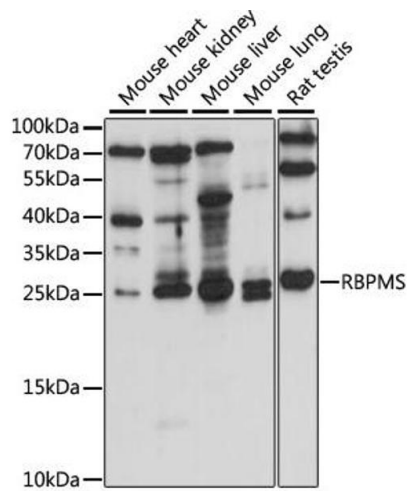
---

Application Notes:	WB,1:200 - 1:2000,IF,1:50 - 1:200
Restrictions:	For Research Use only

## Handling

---

Format:	Liquid
Buffer:	PBS with 0.02 % sodium azide,50 % glycerol, pH 7.3.
Preservative:	Sodium azide
Precaution of Use:	This product contains Sodium azide: a POISONOUS AND HAZARDOUS SUBSTANCE which should be handled by trained staff only.
Storage:	-20 °C
Storage Comment:	Store at -20°C. Avoid freeze / thaw cycles.



### Western Blotting

**Image 1.** Western blot analysis of extracts of various cell lines, using RBPMS antibody (ABIN7270097) at 1:1000 dilution. Secondary antibody: HRP Goat Anti-Rabbit IgG (H+L) (ABIN1684268 and ABIN3020597) at 1:10000 dilution. Lysates/proteins: 25 µg per lane. Blocking buffer: 3% nonfat dry milk in TBST. Detection: ECL Basic Kit (RM00020). Exposure time: 90s.