

Datasheet for ABIN7270103

## anti-POLR2A/RPB1 antibody (pSer5)



[Go to Product page](#)

### 7 Images

#### Overview

|                      |  |
|----------------------|--|
| Quantity:            | 100 µL                                     |
| Target:              | POLR2A/RPB1 (POLR2A)                       |
| Binding Specificity: | pSer5                                      |
| Reactivity:          | Human                                      |
| Host:                | Rabbit                                     |
| Clonality:           | Monoclonal                                 |
| Conjugate:           | This POLR2A/RPB1 antibody is un-conjugated |
| Application:         | Western Blotting (WB)                      |

#### Product Details

|                   |   |
|-------------------|---|
| Purpose:          | Phospho-POLR2A-S5 Rabbit mAb  |
| Immunogen:        | A phospho specific peptide corresponding to residues surrounding S5 of human POLR2A |
| Isotype:          | IgG   |
| Cross-Reactivity: | Human, Mouse  |
| Characteristics:  | Phosphorylated Antibodies   |
| Purification:     | Affinity purification   |

#### Target Details

|                   |  |
|-------------------|--|
| Target:           | POLR2A/RPB1 (POLR2A)                       |
| Alternative Name: | POLR2A ( <a href="#">POLR2A Products</a> ) |

## Target Details

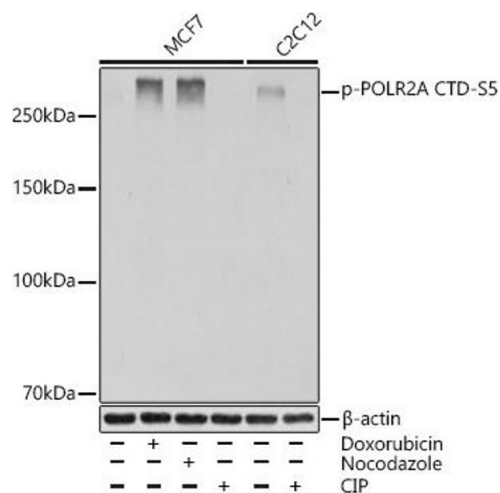
|                   |   |
|-------------------|---|
| Background:       | This gene encodes the largest subunit of RNA polymerase II, the polymerase responsible for synthesizing messenger RNA in eukaryotes. The product of this gene contains a carboxy terminal domain composed of heptapeptide repeats that are essential for polymerase activity. These repeats contain serine and threonine residues that are phosphorylated in actively transcribing RNA polymerase. In addition, this subunit, in combination with several other polymerase subunits, forms the DNA binding domain of the polymerase, a groove in which the DNA template is transcribed into RNA. [provided by RefSeq, Jul 2008],POLR2, POLRA, RPB1, RPBh1, RPO2, RPOL2, RplLS, hRPB220, hsRPB1,DNA Damage & Repair,Epigenetics & Nuclear Signaling,Neurodegenerative Diseases,Neuroscience,Protein phosphorylation,POLR2A |
| Molecular Weight: | 270kDa  |
| Gene ID:          | 5430  |
| UniProt:          | <a href="#">P24928</a>  |
| Pathways:         | <a href="#">Regulatory RNA Pathways</a>   |

## Application Details

|                    |                       |
|--------------------|-----------------------|
| Application Notes: | WB,1:500 - 1:2000     |
| Restrictions:      | For Research Use only |

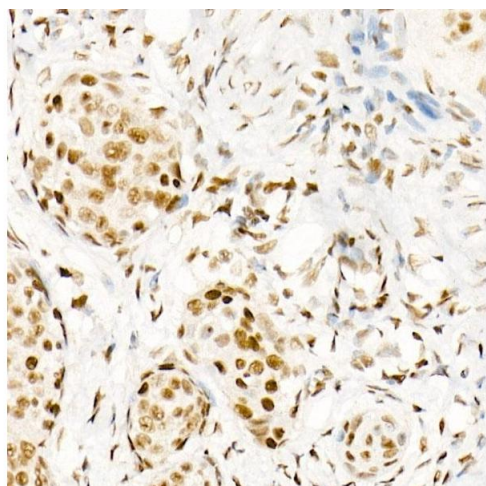
## Handling

|                    |  |
|--------------------|--|
| Format:            | Liquid   |
| Buffer:            | PBS with 0.02 % sodium azide,0.05 % BSA,50 % glycerol, pH 7.3.   |
| Preservative:      | Sodium azide   |
| Precaution of Use: | This product contains Sodium azide: a POISONOUS AND HAZARDOUS SUBSTANCE which should be handled by trained staff only. |
| Storage:           | -20 °C   |
| Storage Comment:   | Store at -20°C. Avoid freeze / thaw cycles.  |



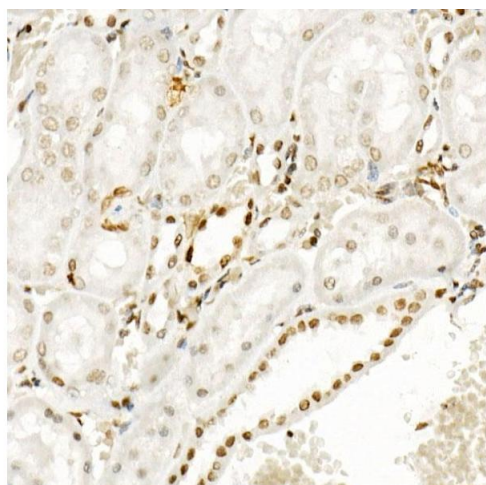
### Western Blotting

**Image 1.** Western blot analysis of extracts of various cell lines, using Phospho-POLR2A CTD-S5 Rabbit mAb at 1:1000 dilution. MCF7 cells were treated by Doxorubicin (0.5 uM) at 37 °C for 24 hours or treated by nocodazole (50 ng/mL) at 37 °C for 20 hours or treated by CIP (20 uL/400 μL) at 37 °C for 1 hour. C2C12 cells were treated by CIP (20 uL/400 μL) at 37 °C for 1 hour. Secondary antibody: HRP Goat Anti-Rabbit IgG (H+L) (ABIN1684268 and ABIN3020597) at 1:10000 dilution. Lysates/proteins: 25 μg per lane. Blocking buffer: 3 % BSA. Detection: ECL Basic Kit (RM00020). Exposure time: 1 s.



### Immunohistochemistry

**Image 2.** Immunohistochemistry of paraffin-embedded human cervix cancer using Phospho-POLR2A CTD-S5 Rabbit mAb at dilution of 1:200 (40x lens).



### Immunohistochemistry

**Image 3.** Immunohistochemistry of paraffin-embedded rat kidney using Phospho-POLR2A CTD-S5 Rabbit mAb at dilution of 1:200 (40x lens).

Please check the [product details page](#) for more images. Overall 7 images are available for ABIN7270103.