



[Go to Product page](#)

Datasheet for ABIN7270109
anti-NOB1 antibody (AA 1-230)

4 Images

Overview

Quantity:	100 µL
Target:	NOB1
Binding Specificity:	AA 1-230
Reactivity:	Human
Host:	Rabbit
Clonality:	Polyclonal
Conjugate:	This NOB1 antibody is un-conjugated
Application:	Western Blotting (WB), Immunofluorescence (IF)

Product Details

Purpose:	NOB1 Rabbit pAb
Immunogen:	Recombinant fusion protein containing a sequence corresponding to amino acids 1-230 of human NOB1 (NP_054781.1).
Sequence:	MAPVEHVVD AGAFLRHAAL QDIGKNIYTI REVVTEIRDK ATRRRRLAVLP YELRFKEPLP EYVRLVTEFS KKTGDYPSLS ATDIQVLALT YQLEAEFVGV SHLKQEPQKV KVSSSIQHPE TPLHISGFHL PYKPKPPQET EKGHSAPEPE NLEFSSFMFW RNPLPNIDHE LQELLIDRGE DVPSEEEEEEE ENGFEDRKDD SDDDGGGWIT PSNIKQIQQE LEQCDVPEDV
Isotype:	IgG
Cross-Reactivity:	Human, Mouse, Rat
Characteristics:	Polyclonal Antibodies

Product Details

Purification: Affinity purification

Target Details

Target: NOB1

Alternative Name: NOB1 ([NOB1 Products](#))

Background: In yeast, over 200 protein and RNA cofactors are required for ribosome assembly, and these are generally conserved in eukaryotes. These factors orchestrate modification and cleavage of the initial 35S precursor rRNA transcript into the mature 18S, 5.8S, and 25S rRNAs, folding of the rRNA, and binding of ribosomal proteins and 5S RNA. Nob1 is involved in pre-rRNA processing. In a late cytoplasmic processing step, Nob1 cleaves a 20S rRNA intermediate at cleavage site D to produce the mature 18S rRNA (Lamanna and Karbstein, 2009 [PubMed 19706509]).[supplied by OMIM, Nov 2010],ART-4,MST158,MSTP158,NOB1P,PSMD8BP1,NOB1,Epigenetics & Nuclear Signaling,NOB1

Gene ID: 28987

UniProt: [Q9ULX3](#)

Pathways: [Protein targeting to Nucleus](#)

Application Details

Application Notes: WB,1:500 - 1:2000,IF,1:50 - 1:200

Restrictions: For Research Use only

Handling

Format: Liquid

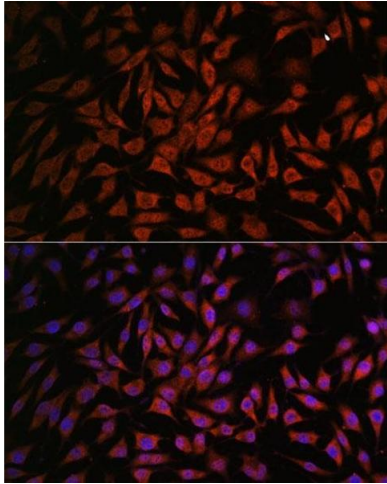
Buffer: PBS with 0.02 % sodium azide,50 % glycerol, pH 7.3.

Preservative: Sodium azide

Precaution of Use: This product contains Sodium azide: a POISONOUS AND HAZARDOUS SUBSTANCE which should be handled by trained staff only.

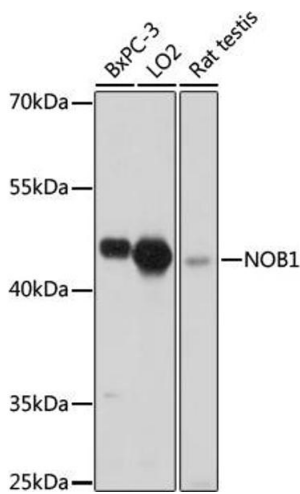
Storage: -20 °C

Storage Comment: Store at -20°C. Avoid freeze / thaw cycles.



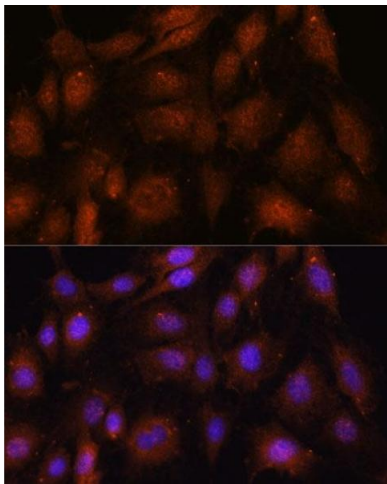
Immunofluorescence

Image 1. Immunofluorescence analysis of L929 cells using NOB1 antibody (ABIN7270109) at dilution of 1:100. Blue: DAPI for nuclear staining.



Western Blotting

Image 2. Western blot analysis of extracts of various cell lines, using NOB1 antibody (ABIN7270109) at 1:1000 dilution. Secondary antibody: HRP Goat Anti-Rabbit IgG (H+L) (ABIN1684268 and ABIN3020597) at 1:10000 dilution. Lysates/proteins: 25 µg per lane. Blocking buffer: 3 % nonfat dry milk in TBST. Detection: ECL Basic Kit (RM00020). Exposure time: 30s.



Immunofluorescence

Image 3. Immunofluorescence analysis of C6 cells using NOB1 antibody (ABIN7270109) at dilution of 1:100. Blue: DAPI for nuclear staining.

Please check the [product details page](#) for more images. Overall 4 images are available for ABIN7270109.