

Datasheet for ABIN7270120

anti-SKP1 antibody**2** Images[Go to Product page](#)

Overview

Quantity:	100 µL
Target:	SKP1
Reactivity:	Human
Host:	Rabbit
Clonality:	Monoclonal
Conjugate:	This SKP1 antibody is un-conjugated
Application:	Western Blotting (WB), Immunofluorescence (IF)

Product Details

Purpose:	SKP1 Rabbit mAb
Immunogen:	A synthesized peptide derived from human SKP1
Isotype:	IgG
Cross-Reactivity:	Human, Mouse, Rat
Characteristics:	Monoclonal Antibodies
Purification:	Affinity purification

Target Details

Target:	SKP1
Alternative Name:	SKP1 (SKP1 Products)
Background:	This gene encodes a component of SCF complexes, which are composed of this protein, cullin

Target Details

1, a ring-box protein, and one member of the F-box family of proteins. This protein binds directly to the F-box motif found in F-box proteins. SCF complexes are involved in the regulated ubiquitination of specific protein substrates, which targets them for degradation by the proteasome. Specific F-box proteins recognize different target protein(s), and many specific SCF substrates have been identified including regulators of cell cycle progression and development. Studies have also characterized the protein as an RNA polymerase II elongation factor. Alternative splicing of this gene results in two transcript variants. A related pseudogene has been identified on chromosome 7. [provided by RefSeq, Jul 2008],EMC19, OCP-II, OCP2, SKP1A, TCEB1L, p19A,Cell Biology & Developmental Biology,Cell Cycle,Cell Cycle_Centromere,Cell Cycle_Centrosome,Kinase,Signal Transduction,Ubiquitin,Ubiquitin_Ubiquitin-Proteasome Signaling Pathway,SKP1

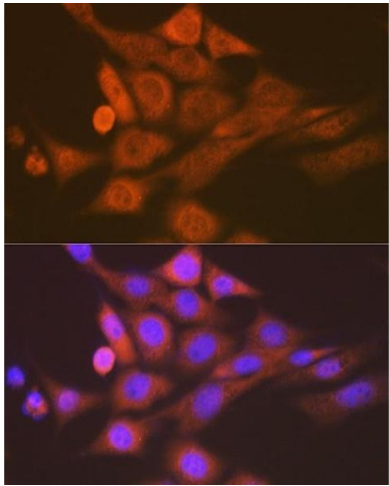
Molecular Weight:	19kDa
Gene ID:	6500
UniProt:	P63208
Pathways:	Cell Division Cycle , Hedgehog Signaling , Mitotic G1-G1/S Phases

Application Details

Application Notes:	WB,1:500 - 1:2000,IF,1:50 - 1:200
Restrictions:	For Research Use only

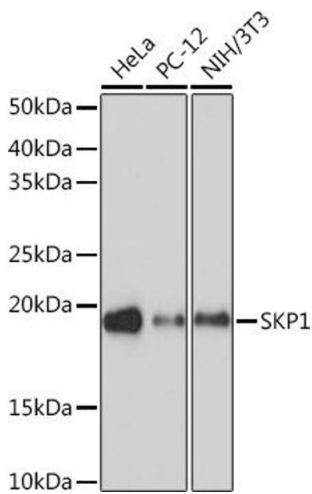
Handling

Format:	Liquid
Buffer:	PBS with 0.02 % sodium azide,0.05 % BSA,50 % glycerol, pH 7.3.
Preservative:	Sodium azide
Precaution of Use:	This product contains Sodium azide: a POISONOUS AND HAZARDOUS SUBSTANCE which should be handled by trained staff only.
Storage:	-20 °C
Storage Comment:	Store at -20°C. Avoid freeze / thaw cycles.



Immunofluorescence

Image 1. Immunofluorescence analysis of NIH-3T3 cells using SKP1 Rabbit mAb (ABIN7270120) at dilution of 1:100 (40x lens). Blue: DAPI for nuclear staining.



Western Blotting

Image 2. Western blot analysis of extracts of various cell lines, using SKP1 Rabbit mAb (ABIN7270120) at 1:1000 dilution. Secondary antibody: HRP Goat Anti-Rabbit IgG (H+L) (ABIN1684268 and ABIN3020597) at 1:10000 dilution. Lysates/proteins: 25 µg per lane. Blocking buffer: 3 % nonfat dry milk in TBST. Detection: ECL Basic Kit (RM00020). Exposure time: 90s.