

Datasheet for ABIN7270122

anti-S100A10 antibody**2** Images[Go to Product page](#)

Overview

Quantity:	100 µL
Target:	S100A10
Reactivity:	Human
Host:	Rabbit
Clonality:	Monoclonal
Conjugate:	This S100A10 antibody is un-conjugated
Application:	Western Blotting (WB), Immunohistochemistry (IHC)

Product Details

Purpose:	S100A10 Rabbit mAb
Immunogen:	A synthesized peptide derived from human S100A10
Isotype:	IgG
Cross-Reactivity:	Human
Characteristics:	Monoclonal Antibodies
Purification:	Affinity purification

Target Details

Target:	S100A10
Alternative Name:	S100A10 (S100A10 Products)
Background:	The protein encoded by this gene is a member of the S100 family of proteins containing 2 EF-

Target Details

hand calcium-binding motifs. S100 proteins are localized in the cytoplasm and/or nucleus of a wide range of cells, and involved in the regulation of a number of cellular processes such as cell cycle progression and differentiation. S100 genes include at least 13 members which are located as a cluster on chromosome 1q21. This protein may function in exocytosis and endocytosis. [provided by RefSeq, Jul 2008],42C, ANX2L, ANX2LG, CAL1L, CLP11, Ca[1], GP11, P11, p10,Calcium Signaling,Cell Adhesion,Cell Adhesion_Annexins,Cell Biology & Developmental Biology,Cytoskeleton,Neuroscience,Signal Transduction,S100A10

Molecular Weight: 11kDa

Gene ID: 6281

UniProt: [P60903](#)

Pathways: [S100 Proteins](#)

Application Details

Application Notes: WB,1:500 - 1:2000, IHC,1:50 - 1:200

Restrictions: For Research Use only

Handling

Format: Liquid

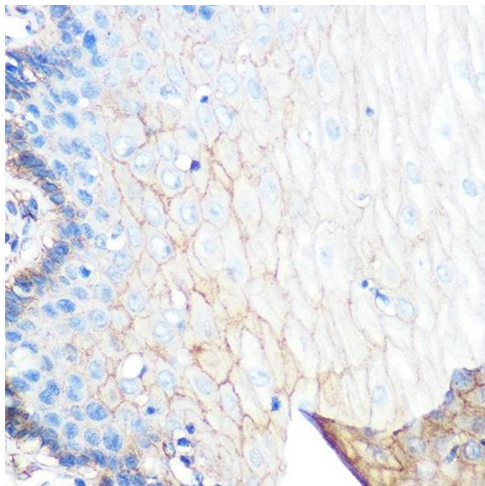
Buffer: PBS with 0.02 % sodium azide,0.05 % BSA,50 % glycerol, pH 7.3.

Preservative: Sodium azide

Precaution of Use: This product contains Sodium azide: a POISONOUS AND HAZARDOUS SUBSTANCE which should be handled by trained staff only.

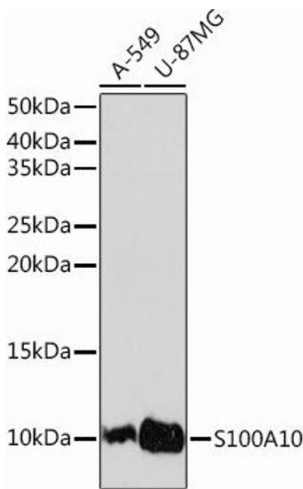
Storage: -20 °C

Storage Comment: Store at -20°C. Avoid freeze / thaw cycles.



Immunohistochemistry

Image 1. Immunohistochemistry of paraffin-embedded human esophageal using S100 Rabbit mAb (ABIN7270122) at dilution of 1:100 (40x lens). Perform microwave antigen retrieval with 10 mM PBS buffer pH 7.2 before commencing with IHC staining protocol.



Western Blotting

Image 2. Western blot analysis of extracts of various cell lines, using S100 Rabbit mAb (ABIN7270122) at 1:1000 dilution. Secondary antibody: HRP Goat Anti-Rabbit IgG (H+L) (ABIN1684268 and ABIN3020597) at 1:10000 dilution. Lysates/proteins: 25 µg per lane. Blocking buffer: 3 % nonfat dry milk in TBST. Detection: ECL Basic Kit (RM00020). Exposure time: 3 min.