

Datasheet for ABIN7270123
anti-S100A10 antibody (AA 1-97)

6 Images

[Go to Product page](#)

Overview

Quantity:	100 µL
Target:	S100A10
Binding Specificity:	AA 1-97
Reactivity:	Human
Host:	Rabbit
Clonality:	Polyclonal
Application:	Western Blotting (WB)

Product Details

Purpose:	S100A10 Rabbit pAb
Immunogen:	Recombinant fusion protein containing a sequence corresponding to amino acids 1-97 of human S100A10 (NP_002957.1).
Sequence:	MPSQMEHAME TMMFTFHKFA GDKGYLTKEG LRVLMEKEFP GFLENQKDPL AVDKIMKDLD QCRDGKVGFG SFFSLIAGLT IACNDYFVVH MKQKGKK
Isotype:	IgG
Cross-Reactivity:	Human, Mouse, Rat
Characteristics:	Polyclonal Antibodies
Purification:	Affinity purification

Target Details

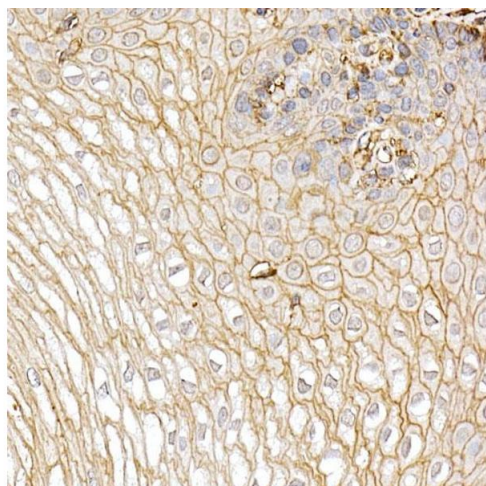
Target:	S100A10
Alternative Name:	S100A10 (S100A10 Products)
Background:	<p>The protein encoded by this gene is a member of the S100 family of proteins containing 2 EF-hand calcium-binding motifs. S100 proteins are localized in the cytoplasm and/or nucleus of a wide range of cells, and involved in the regulation of a number of cellular processes such as cell cycle progression and differentiation. S100 genes include at least 13 members which are located as a cluster on chromosome 1q21. This protein may function in exocytosis and endocytosis.,S100A10,42C,ANX2L,ANX2LG,CAL1L,CLP11,Ca[1],GP11,P11,p10,Signal Transduction,Cell Biology & Developmental Biology,Cell Adhesion,Annexins,Cytoskeleton,Neuroscience,Calcium Signaling,S100A10</p>
Molecular Weight:	11kDa
Gene ID:	6281
UniProt:	P60903
Pathways:	S100 Proteins

Application Details

Application Notes:	WB,1:500 - 1:2000
Restrictions:	For Research Use only

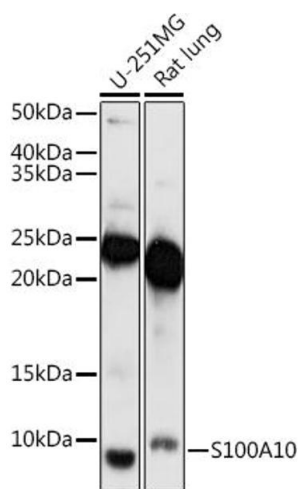
Handling

Format:	Liquid
Buffer:	PBS with 0.02 % sodium azide,50 % glycerol, pH 7.3.
Preservative:	Sodium azide
Precaution of Use:	This product contains Sodium azide: a POISONOUS AND HAZARDOUS SUBSTANCE which should be handled by trained staff only.
Storage:	-20 °C
Storage Comment:	Store at -20°C. Avoid freeze / thaw cycles.



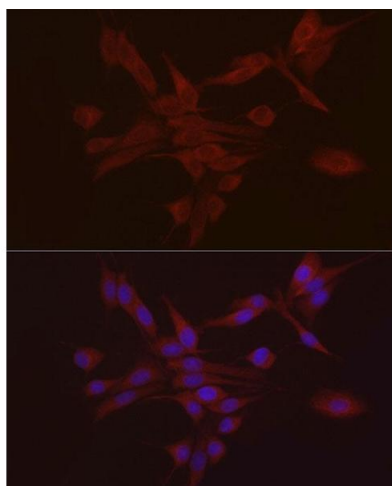
Immunohistochemistry

Image 1. Immunohistochemistry of paraffin-embedded Human esophagus using S100 antibody (ABIN7270123) at dilution of 1:25 (40x lens). Perform high pressure antigen retrieval with 10 mM citrate buffer pH 6.0 before commencing with IHC staining protocol.



Western Blotting

Image 2. Western blot analysis of extracts of various cell lines, using S100 antibody (ABIN7270123) at 1:1000 dilution. Secondary antibody: HRP Goat Anti-Rabbit IgG (H+L) (ABIN1684268 and ABIN3020597) at 1:10000 dilution. Lysates/proteins: 25 µg per lane. Blocking buffer: 3 % nonfat dry milk in TBST. Detection: ECL Enhanced Kit (RM00021). Exposure time: 180s.



Immunofluorescence

Image 3. Immunofluorescence analysis of PC-12 using S100 antibody (ABIN7270123) at dilution of 1:25 (40x lens). Blue: DAPI for nuclear staining.

Please check the [product details page](#) for more images. Overall 6 images are available for ABIN7270123.