

Datasheet for ABIN7270127

anti-S100A6 antibody

5 Images

[Go to Product page](#)

Overview

Quantity:	100 µL
Target:	S100A6
Reactivity:	Human
Host:	Rabbit
Clonality:	Monoclonal
Conjugate:	This S100A6 antibody is un-conjugated
Application:	Western Blotting (WB), Immunohistochemistry (IHC), Immunofluorescence (IF)

Product Details

Purpose:	S100A6 Rabbit mAb
Immunogen:	A synthesized peptide derived from human S100A6
Isotype:	IgG
Cross-Reactivity:	Human, Mouse, Rat
Characteristics:	Monoclonal Antibodies
Purification:	Affinity purification

Target Details

Target:	S100A6
Alternative Name:	S100A6 (S100A6 Products)
Background:	The protein encoded by this gene is a member of the S100 family of proteins containing 2 EF-

Target Details

hand calcium-binding motifs. S100 proteins are localized in the cytoplasm and/or nucleus of a wide range of cells, and involved in the regulation of a number of cellular processes such as cell cycle progression and differentiation. S100 genes include at least 13 members which are located as a cluster on chromosome 1q21. This protein may function in stimulation of Ca²⁺-dependent insulin release, stimulation of prolactin secretion, and exocytosis. Chromosomal rearrangements and altered expression of this gene have been implicated in melanoma. [provided by RefSeq, Jul 2008],2A9, 5B10, CABP, CACY, PRA,Cell Biology & Developmental Biology,Cell Cycle,Cell Cycle_Cell differentiation,Epigenetics & Nuclear Signaling,Growth factors,S100A6

Molecular Weight: 10kDa

Gene ID: 6277

UniProt: [P06703](#)

Pathways: [S100 Proteins](#)

Application Details

Application Notes: WB,1:500 - 1:2000,IHC,1:50 - 1:200,IF,1:50 - 1:200

Restrictions: For Research Use only

Handling

Format: Liquid

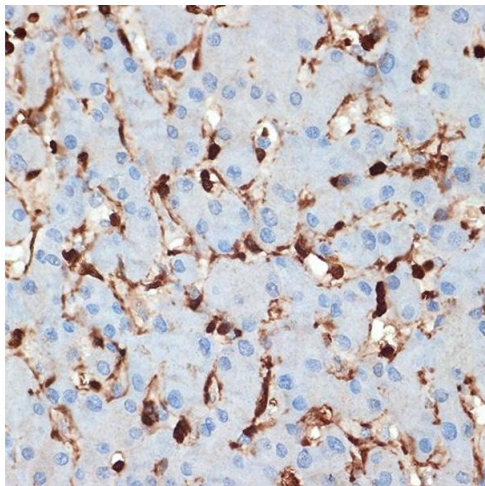
Buffer: PBS with 0.02 % sodium azide,0.05 % BSA,50 % glycerol, pH 7.3.

Preservative: Sodium azide

Precaution of Use: This product contains Sodium azide: a POISONOUS AND HAZARDOUS SUBSTANCE which should be handled by trained staff only.

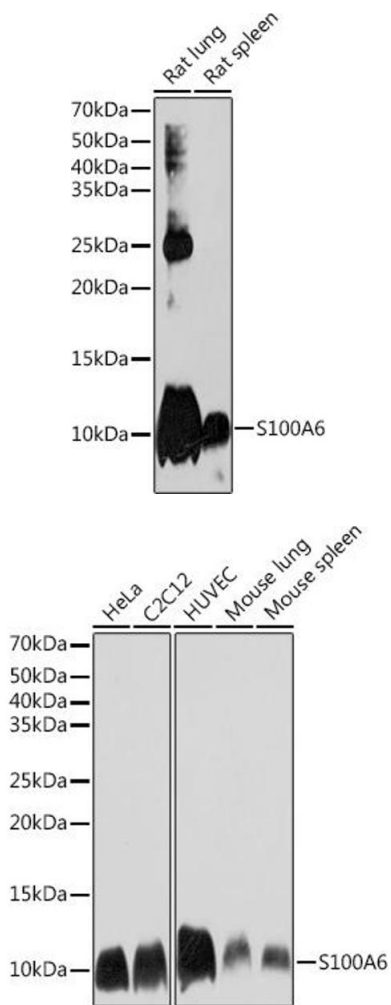
Storage: -20 °C

Storage Comment: Store at -20°C. Avoid freeze / thaw cycles.



Immunohistochemistry

Image 1. Immunohistochemistry of paraffin-embedded human liver using S100 Rabbit mAb (ABIN7270127) at dilution of 1:100 (40x lens). Perform microwave antigen retrieval with 10 mM Tris/EDTA buffer pH 9.0 before commencing with IHC staining protocol.



Western Blotting

Image 2. Western blot analysis of extracts of various cell lines, using S100 Rabbit mAb (ABIN7270127) at 1:1000 dilution. Secondary antibody: HRP Goat Anti-Rabbit IgG (H+L) (ABIN1684268 and ABIN3020597) at 1:10000 dilution. Lysates/proteins: 25 µg per lane. Blocking buffer: 3 % nonfat dry milk in TBST. Detection: ECL Basic Kit (RM00020). Exposure time: 3 min.

Western Blotting

Image 3. Western blot analysis of extracts of various cell lines, using S100 Rabbit mAb (ABIN7270127) at 1:1000 dilution. Secondary antibody: HRP Goat Anti-Rabbit IgG (H+L) (ABIN1684268 and ABIN3020597) at 1:10000 dilution. Lysates/proteins: 25 µg per lane. Blocking buffer: 3 % nonfat dry milk in TBST. Detection: ECL Basic Kit (RM00020). Exposure time: 30s.

Please check the [product details page](#) for more images. Overall 5 images are available for ABIN7270127.