



[Go to Product page](#)

Datasheet for ABIN7270132

anti-S100P antibody

2 Images

Overview

Quantity:	100 µL
Target:	S100P
Reactivity:	Human
Host:	Rabbit
Clonality:	Monoclonal
Conjugate:	This S100P antibody is un-conjugated
Application:	Western Blotting (WB)

Product Details

Purpose:	S100P Rabbit mAb
Immunogen:	Recombinant protein of human S100P.
Isotype:	IgG
Cross-Reactivity:	Human
Characteristics:	Monoclonal Antibodies
Purification:	Affinity purification

Target Details

Target:	S100P
Alternative Name:	S100P (S100P Products)
Background:	The protein encoded by this gene is a member of the S100 family of proteins containing 2 EF-

Target Details

hand calcium-binding motifs. S100 proteins are localized in the cytoplasm and/or nucleus of a wide range of cells, and involved in the regulation of a number of cellular processes such as cell cycle progression and differentiation. S100 genes include at least 13 members which are located as a cluster on chromosome 1q21, however, this gene is located at 4p16. This protein, in addition to binding Ca²⁺, also binds Zn²⁺ and Mg²⁺. This protein may play a role in the etiology of prostate cancer.,MIG9,Cancer,Tumor biomarkers,Signal Transduction,Neuroscience,Calcium Signaling,S100P

Molecular Weight: 10kDa

Gene ID: 6286

UniProt: [P25815](#)

Pathways: [Regulation of Muscle Cell Differentiation](#), [Toll-Like Receptors Cascades](#), [S100 Proteins](#)

Application Details

Application Notes: WB,1:500 - 1:2000

Restrictions: For Research Use only

Handling

Format: Liquid

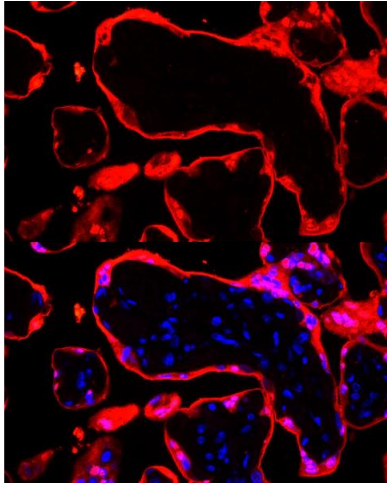
Buffer: PBS with 0.02 % sodium azide,50 % glycerol, pH 7.3.

Preservative: Sodium azide

Precaution of Use: This product contains Sodium azide: a POISONOUS AND HAZARDOUS SUBSTANCE which should be handled by trained staff only.

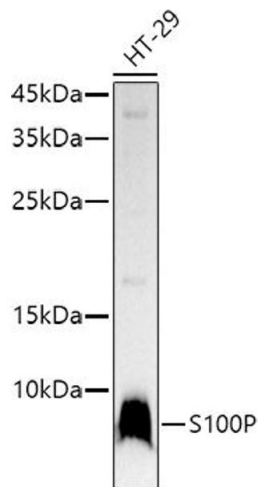
Storage: -20 °C

Storage Comment: Store at -20°C. Avoid freeze / thaw cycles.



Immunofluorescence

Image 1. Immunofluorescence analysis of human placenta cells using S100P Rabbit mAb at dilution of 1:100 (40x lens). Blue: DAPI for nuclear staining.



Western Blotting

Image 2. Western blot analysis of extracts of HT-29 cells, using S100P antibody at 1:1000 dilution. Secondary antibody: HRP Goat Anti-Rabbit IgG (H+L) (ABIN1684268 and ABIN3020597) at 1:10000 dilution. Lysates/proteins: 25 µg per lane. Blocking buffer: 3% nonfat dry milk in TBST. Detection: ECL Basic Kit (RM00020). Exposure time: 30s.