

Datasheet for ABIN7270133  
**anti-S100P antibody (AA 1-95)**

## 6 Images

[Go to Product page](#)

## Overview

|                      |  |
|----------------------|--|
| Quantity:            | 100 µL   |
| Target:              | S100P  |
| Binding Specificity: | AA 1-95  |
| Reactivity:          | Human  |
| Host:                | Rabbit   |
| Clonality:           | Polyclonal   |
| Conjugate:           | This S100P antibody is un-conjugated   |
| Application:         | Western Blotting (WB), Immunohistochemistry (IHC), Immunoprecipitation (IP), Immunofluorescence (IF) |

## Product Details

|                   |  |
|-------------------|--|
| Purpose:          | S100P Rabbit pAb   |
| Immunogen:        | A synthetic peptide corresponding to a sequence within amino acids 1-95 of human S100P (NP_005971.1).      |
| Sequence:         | MTELETAMGM IIDVFSRYSG SEGSTQTLTK GELKVLMEKE LPGFLQSGKD KDAVDKLLKD<br>LDANGDAQVD FSEFIVFAA ITSACHKYFE KAGLK |
| Isotype:          | IgG  |
| Cross-Reactivity: | Human, Mouse, Rat  |
| Characteristics:  | Polyclonal Antibodies  |
| Purification:     | Affinity purification  |

## Target Details

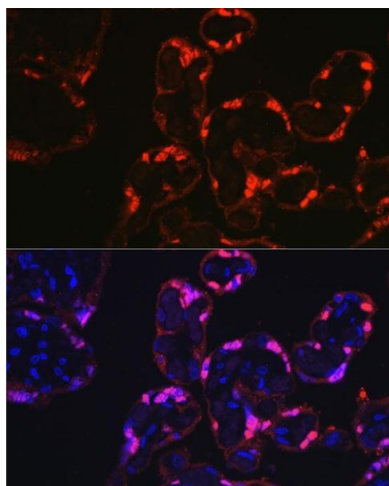
|                   |  |
|-------------------|--|
| Target:           | S100P  |
| Alternative Name: | S100P ( <a href="#">S100P Products</a> )   |
| Background:       | <p>The protein encoded by this gene is a member of the S100 family of proteins containing 2 EF-hand calcium-binding motifs. S100 proteins are localized in the cytoplasm and/or nucleus of a wide range of cells, and involved in the regulation of a number of cellular processes such as cell cycle progression and differentiation. S100 genes include at least 13 members which are located as a cluster on chromosome 1q21, however, this gene is located at 4p16. This protein, in addition to binding Ca<sup>2+</sup>, also binds Zn<sup>2+</sup> and Mg<sup>2+</sup>. This protein may play a role in the etiology of prostate cancer.,S100P,MIG9,Cancer,Tumor biomarkers,Signal Transduction,Neuroscience,Calcium Signaling,S100P</p> |
| Molecular Weight: | 10kDa  |
| Gene ID:          | 6286   |
| UniProt:          | <a href="#">P25815</a>   |
| Pathways:         | <a href="#">Regulation of Muscle Cell Differentiation</a> , <a href="#">Toll-Like Receptors Cascades</a> , <a href="#">S100 Proteins</a>   |

## Application Details

|                    |   |
|--------------------|---|
| Application Notes: | WB,1:500 - 1:2000,IHC,1:100 - 1:200,IF,1:50 - 1:200,IP,1:50 - 1:200 |
| Restrictions:      | For Research Use only   |

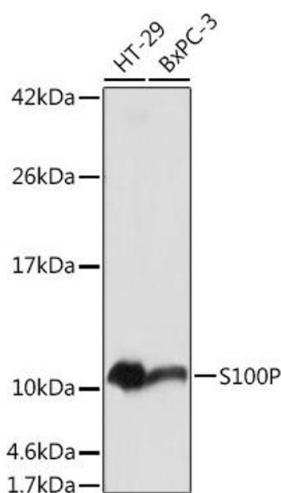
## Handling

|                    |  |
|--------------------|--|
| Format:            | Liquid   |
| Buffer:            | PBS with 0.02 % sodium azide,50 % glycerol, pH 7.3.  |
| Preservative:      | Sodium azide   |
| Precaution of Use: | This product contains Sodium azide: a POISONOUS AND HAZARDOUS SUBSTANCE which should be handled by trained staff only. |
| Storage:           | -20 °C   |
| Storage Comment:   | Store at -20°C. Avoid freeze / thaw cycles.  |



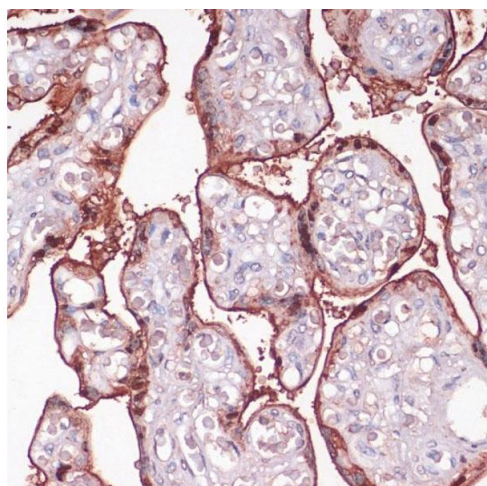
#### Immunofluorescence

**Image 1.** Immunofluorescence analysis of human placenta cells using S100P Rabbit pAb (ABIN7270133) at dilution of 1:100 (40x lens). Blue: DAPI for nuclear staining.



#### Western Blotting

**Image 2.** Western blot analysis of extracts of various cell lines, using S100P antibody (ABIN7270133) at 1:1000 dilution. Secondary antibody: HRP Goat Anti-Rabbit IgG (H+L) (ABIN1684268 and ABIN3020597) at 1:10000 dilution. Lysates/proteins: 25 µg per lane. Blocking buffer: 3 % nonfat dry milk in TBST. Detection: ECL Basic Kit (RM00020). Exposure time: 5s.



#### Immunohistochemistry

**Image 3.** Immunohistochemistry of paraffin-embedded human placenta using S100P antibody (ABIN7270133) at dilution of 1:100 (40x lens). Perform microwave antigen retrieval with 10 mM PBS buffer pH 7.2 before commencing with IHC staining protocol.

Please check the [product details page](#) for more images. Overall 6 images are available for ABIN7270133.