

Datasheet for ABIN7270144

anti-SGCD antibody**2** Images[Go to Product page](#)

Overview

Quantity:	100 µL
Target:	SGCD
Reactivity:	Human
Host:	Rabbit
Clonality:	Monoclonal
Conjugate:	This SGCD antibody is un-conjugated
Application:	Western Blotting (WB)

Product Details

Purpose:	Delta-sarcoglycan (SGCD) Rabbit mAb
Immunogen:	A synthesized peptide derived from human Delta-sarcoglycan (SGCD)
Isotype:	IgG
Cross-Reactivity:	Human, Mouse
Characteristics:	Monoclonal Antibodies
Purification:	Affinity purification

Target Details

Target:	SGCD
Alternative Name:	SGCD (SGCD Products)
Background:	The protein encoded by this gene is one of the four known components of the sarcoglycan

Target Details

complex, which is a subcomplex of the dystrophin-glycoprotein complex (DGC). DGC forms a link between the F-actin cytoskeleton and the extracellular matrix. This protein is expressed most abundantly in skeletal and cardiac muscle. Mutations in this gene have been associated with autosomal recessive limb-girdle muscular dystrophy and dilated cardiomyopathy. Alternatively spliced transcript variants encoding distinct isoforms have been observed for this gene. [provided by RefSeq, Jul 2008],35DAG, CMD1L, DAGD, SG-delta, SGCDP, SGD,Cell Biology & Developmental Biology,Cytoskeleton,Extracellular Matrix,Signal Transduction,SGCD

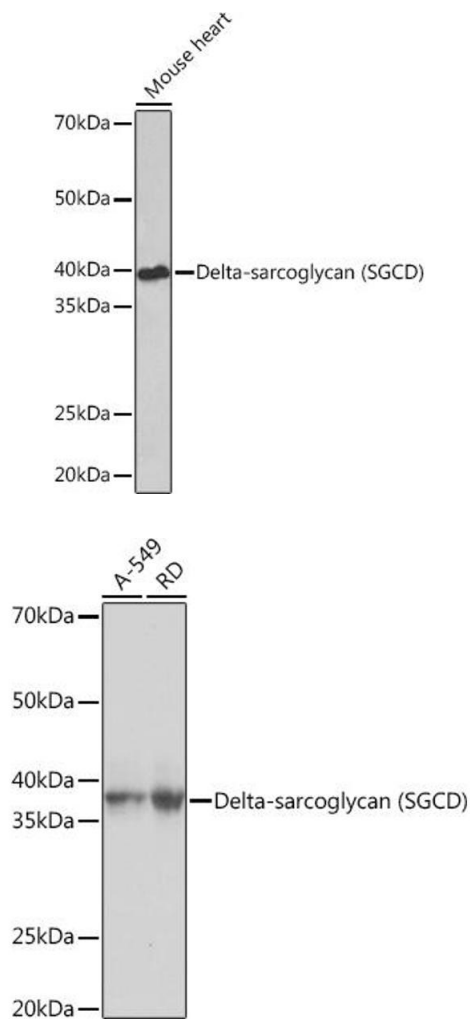
Molecular Weight:	35kDa
Gene ID:	6444
UniProt:	Q92629
Pathways:	Maintenance of Protein Location

Application Details

Application Notes:	WB,1:500 - 1:2000
Restrictions:	For Research Use only

Handling

Format:	Liquid
Buffer:	PBS with 0.02 % sodium azide,0.05 % BSA,50 % glycerol, pH 7.3.
Preservative:	Sodium azide
Precaution of Use:	This product contains Sodium azide: a POISONOUS AND HAZARDOUS SUBSTANCE which should be handled by trained staff only.
Storage:	-20 °C
Storage Comment:	Store at -20°C. Avoid freeze / thaw cycles.



Western Blotting

Image 1. Western blot analysis of extracts of Mouse heart, using Delta-sarcoglycan (SGCD) Rabbit mAb (ABIN7270144) at 1:1000 dilution. Secondary antibody: HRP Goat Anti-Rabbit IgG (H+L) (ABIN1684268 and ABIN3020597) at 1:10000 dilution. Lysates/proteins: 25 µg per lane. Blocking buffer: 3 % nonfat dry milk in TBST. Detection: ECL Basic Kit (RM00020). Exposure time: 90s.

Western Blotting

Image 2. Western blot analysis of extracts of various cell lines, using Delta-sarcoglycan (SGCD) Rabbit mAb (ABIN7270144) at 1:1000 dilution. Secondary antibody: HRP Goat Anti-Rabbit IgG (H+L) (ABIN1684268 and ABIN3020597) at 1:10000 dilution. Lysates/proteins: 25 µg per lane. Blocking buffer: 3 % nonfat dry milk in TBST. Detection: ECL Basic Kit (RM00020). Exposure time: 3s.