

Datasheet for ABIN7270157

**anti-SCARB2 antibody**

## 4 Images

[Go to Product page](#)

## Overview

Quantity:	100 µL
Target:	SCARB2
Reactivity:	Human
Host:	Rabbit
Clonality:	Monoclonal
Conjugate:	This SCARB2 antibody is un-conjugated
Application:	Western Blotting (WB), Immunohistochemistry (IHC)

## Product Details

Purpose:	SR-B2/LIMPII Rabbit mAb
Immunogen:	A synthesized peptide derived from human SR-B2/SR-B2/LIMPII
Isotype:	IgG
Cross-Reactivity:	Human, Mouse, Rat
Characteristics:	Monoclonal Antibodies
Purification:	Affinity purification

## Target Details

Target:	SCARB2
Alternative Name:	SCARB2 ( <a href="#">SCARB2 Products</a> )
Background:	The protein encoded by this gene is a type III glycoprotein that is located primarily in limiting

## Target Details

membranes of lysosomes and endosomes. Earlier studies in mice and rat suggested that this protein may participate in membrane transportation and the reorganization of endosomal/lysosomal compartment. The protein deficiency in mice was reported to impair cell membrane transport processes and cause pelvic junction obstruction, deafness, and peripheral neuropathy. Further studies in human showed that this protein is a ubiquitously expressed protein and that it is involved in the pathogenesis of HFMD (hand, foot, and mouth disease) caused by enterovirus-71 and possibly by coxsackievirus A16. Mutations in this gene caused an autosomal recessive progressive myoclonic epilepsy-4 (EPM4), also known as action myoclonus-renal failure syndrome (AMRF). Alternatively spliced transcript variants encoding different isoforms have been found for this gene.[provided by RefSeq, Feb 2011],AMRF, CD36L2, EPM4, HLGP85, LGP85, LIMP-2, LIMPII, SR-BII,Cancer,Cardiovascular,Endocrine & Metabolism,Lipid Metabolism,Lipid Metabolism\_Cholesterol Metabolism,Lipids,Signal Transduction,SCARB2

Molecular Weight:	77kDa
-------------------	-------

Gene ID:	950
----------	-----

UniProt:	<a href="#">Q14108</a>
----------	------------------------

## Application Details

Application Notes:	WB,1:500 - 1:2000,IHC,1:50 - 1:200
--------------------	------------------------------------

Restrictions:	For Research Use only
---------------	-----------------------

## Handling

Format:	Liquid
---------	--------

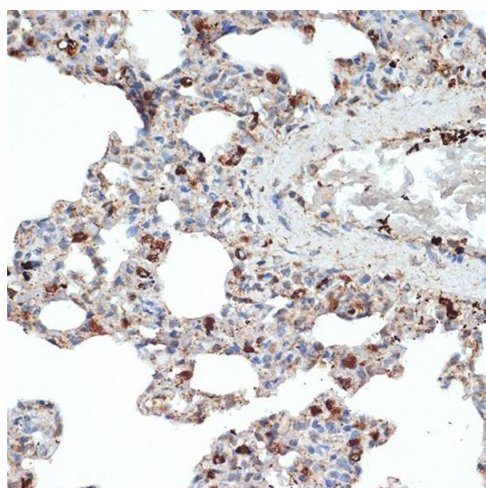
Buffer:	PBS with 0.02 % sodium azide,0.05 % BSA,50 % glycerol, pH 7.3.
---------	--

Preservative:	Sodium azide
---------------	--------------

Precaution of Use:	This product contains Sodium azide: a POISONOUS AND HAZARDOUS SUBSTANCE which should be handled by trained staff only.
--------------------	--

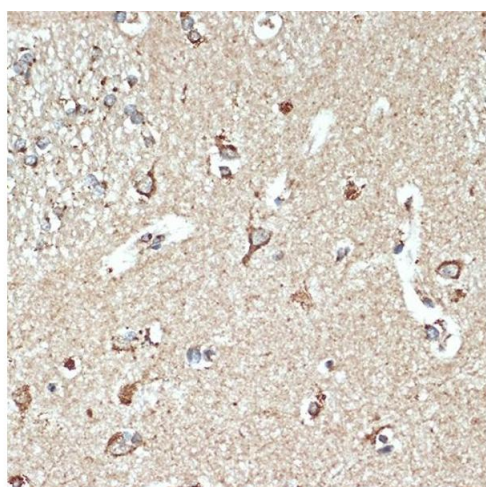
Storage:	-20 °C
----------	--------

Storage Comment:	Store at -20°C. Avoid freeze / thaw cycles.
------------------	---



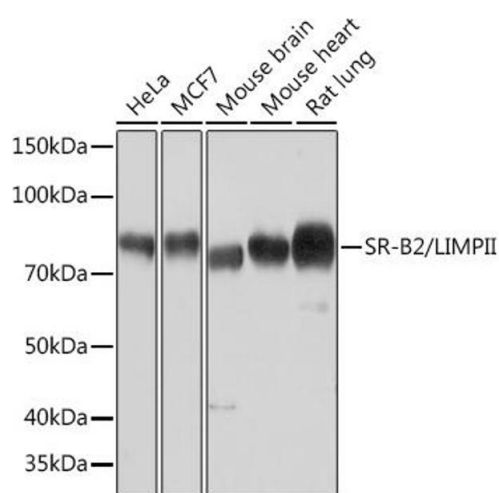
### Immunohistochemistry

**Image 1.** Immunohistochemistry of paraffin-embedded rat lung using SR-B2/SR-B2/LIMPII Rabbit mAb (ABIN7270157) at dilution of 1:100 (40x lens). Perform microwave antigen retrieval with 10 mM Tris/EDTA buffer pH 9.0 before commencing with IHC staining protocol.



### Immunohistochemistry

**Image 2.** Immunohistochemistry of paraffin-embedded human brain using SR-B2/SR-B2/LIMPII Rabbit mAb (ABIN7270157) at dilution of 1:100 (40x lens). Perform microwave antigen retrieval with 10 mM Tris/EDTA buffer pH 9.0 before commencing with IHC staining protocol.



### Western Blotting

**Image 3.** Western blot analysis of extracts of various cell lines, using SR-B2/SR-B2/LIMPII Rabbit mAb (ABIN7270157) at 1:1000 dilution. Secondary antibody: HRP Goat Anti-Rabbit IgG (H+L) (ABIN1684268 and ABIN3020597) at 1:10000 dilution. Lysates/proteins: 25 µg per lane. Blocking buffer: 3 % nonfat dry milk in TBST. Detection: ECL Basic Kit (RM00020). Exposure time: 10s.

Please check the [product details page](#) for more images. Overall 4 images are available for ABIN7270157.