

Datasheet for ABIN7270164

anti-SCRIB antibody



[Go to Product page](#)

1 Image

Overview

Quantity:	100 µL
Target:	SCRIB
Reactivity:	Human
Host:	Rabbit
Clonality:	Polyclonal
Conjugate:	This SCRIB antibody is un-conjugated
Application:	Western Blotting (WB), Immunofluorescence (IF)

Product Details

Purpose:	SCRIB Rabbit pAb
Immunogen:	Recombinant protein of human SCRIB.
Isotype:	IgG
Cross-Reactivity:	Human, Mouse
Characteristics:	Polyclonal Antibodies
Purification:	Affinity purification

Target Details

Target:	SCRIB
Alternative Name:	SCRIB (SCRIB Products)
Background:	This gene encodes a protein that was identified as being similar to the Drosophila scribble

Target Details

protein. The mammalian protein is involved in tumor suppression pathways. As a scaffold protein involved in cell polarization processes, this protein binds to many other proteins. The encoded protein binds to papillomavirus E6 protein via its PDZ domain and the C-terminus of E6. Two alternatively spliced transcript variants that encode different protein isoforms have been found for this gene.,CRIB1,SCRB1,SCRIB1,Vartul,SCRIB,SCRIB

Molecular Weight: 175kDa

Gene ID: 23513

UniProt: [Q14160](#)

Pathways: [Cell-Cell Junction Organization](#), [Production of Molecular Mediator of Immune Response](#), [Tube Formation](#), [Synaptic Vesicle Exocytosis](#), [Asymmetric Protein Localization](#)

Application Details

Application Notes: WB,1:500 - 1:2000,IF,1:50 - 1:200

Restrictions: For Research Use only

Handling

Format: Liquid

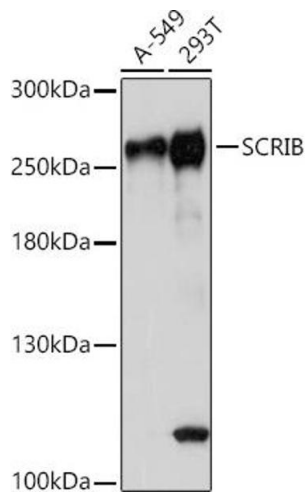
Buffer: PBS with 0.02 % sodium azide,50 % glycerol, pH 7.3.

Preservative: Sodium azide

Precaution of Use: This product contains Sodium azide: a POISONOUS AND HAZARDOUS SUBSTANCE which should be handled by trained staff only.

Storage: -20 °C

Storage Comment: Store at -20°C. Avoid freeze / thaw cycles.



Western Blotting

Image 1. Western blot analysis of extracts of various cell lines, using SCRIB antibody (ABIN7270164) at 1:1000 dilution. Secondary antibody: HRP Goat Anti-Rabbit IgG (H+L) (ABIN1684268 and ABIN3020597) at 1:10000 dilution. Lysates/proteins: 25 µg per lane. Blocking buffer: 3 % nonfat dry milk in TBST. Detection: ECL Basic Kit (RM00020). Exposure time: 5s.