

Datasheet for ABIN7270181  
**anti-SFRP5 antibody (AA 30-317)**



[Go to Product page](#)

2 Images

Overview

Quantity:	100 µL
Target:	SFRP5
Binding Specificity:	AA 30-317
Reactivity:	Human
Host:	Rabbit
Clonality:	Polyclonal
Conjugate:	This SFRP5 antibody is un-conjugated
Application:	Western Blotting (WB), Immunohistochemistry (IHC), Immunofluorescence (IF)

Product Details

Purpose:	SFRP5 Rabbit pAb
Immunogen:	Recombinant fusion protein containing a sequence corresponding to amino acids 30-317 of human SFRP5 (NP_003006.2).
Sequence:	EEYDYYGWQA EPLHGRSYSK PPQCLDIPAD LPLCHTVGYK RMRLPNLLEH ESLAEVKQQA SSWLPLLAKR CHSDTQVFLC SLFAPVCLDR PIYPCRSICE AVRAGCAPLM EAYGFPWPPEM LHCHKFPLDN DLCIAVQFGH LPATAPPVTK ICAQCEMEHS ADGLMEQMCS SDFVVKMRIK EIKIENGDRK LIGAQQKKKL LKPGPLKRKD TKRLVLHMKN GAGCPCPQLD SLAGSFLVMG RKVDGQLLLM AVYRWDKKNK EMKFAVKFMF SYPCSLYYPF FYGAAEPH
Isotype:	IgG
Cross-Reactivity:	Human, Mouse, Rat
Characteristics:	Polyclonal Antibodies

## Product Details

---

Purification: Affinity purification

## Target Details

---

Target: SFRP5

Alternative Name: SFRP5 ([SFRP5 Products](#))

Background: Secreted frizzled-related protein 5 (SFRP5) is a member of the SFRP family that contains a cysteine-rich domain homologous to the putative Wnt-binding site of Frizzled proteins. SFRPs act as soluble modulators of Wnt signaling. SFRP5 and SFRP1 may be involved in determining the polarity of photoreceptor cells in the retina. SFRP5 is highly expressed in the retinal pigment epithelium, and moderately expressed in the pancreas.,SFRP5,SARP3,Cell Biology & Developmental Biology,Apoptosis,Wnt/ $\beta$ -Catenin Signaling Pathway,Stem Cells,SFRP5

Molecular Weight: 35kDa

Gene ID: 6425

UniProt: [Q5T4F7](#)

Pathways: [WNT Signaling](#)

## Application Details

---

Application Notes: WB,1:500 - 1:2000,IHC,1:50 - 1:100,IF,1:50 - 1:100

Restrictions: For Research Use only

## Handling

---

Format: Liquid

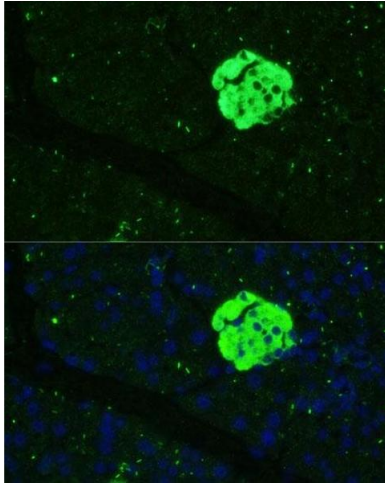
Buffer: PBS with 0.02 % sodium azide,50 % glycerol, pH 7.3.

Preservative: Sodium azide

Precaution of Use: This product contains Sodium azide: a POISONOUS AND HAZARDOUS SUBSTANCE which should be handled by trained staff only.

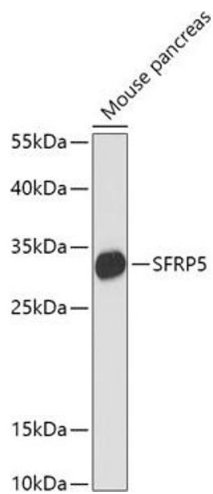
Storage: -20 °C

Storage Comment: Store at -20°C. Avoid freeze / thaw cycles.



### Immunofluorescence

**Image 1.** Immunofluorescence analysis of mouse pancreas using SFRP5 Polyclonal Antibody (ABIN7270181) at dilution of 1:100 (40x lens). Blue: DAPI for nuclear staining.



### Western Blotting

**Image 2.** Western blot analysis of extracts of Mouse pancreas, using SFRP5 antibody (ABIN7270181) at 1:1000 dilution. Secondary antibody: HRP Goat Anti-Rabbit IgG (H+L) (ABIN1684268 and ABIN3020597) at 1:10000 dilution. Lysates/proteins: 25 µg per lane. Blocking buffer: 3 % nonfat dry milk in TBST. Detection: ECL Basic Kit (RM00020). Exposure time: 90s.