

Datasheet for ABIN7270184
anti-SCGB1A1 antibody (AA 22-91)[Go to Product page](#)

4 Images

Overview

Quantity:	100 µL
Target:	SCGB1A1
Binding Specificity:	AA 22-91
Reactivity:	Human
Host:	Rabbit
Clonality:	Polyclonal
Conjugate:	This SCGB1A1 antibody is un-conjugated
Application:	Western Blotting (WB), Immunohistochemistry (IHC), Immunofluorescence (IF)

Product Details

Purpose:	SCGB1A1 Rabbit pAb
Immunogen:	Recombinant fusion protein containing a sequence corresponding to amino acids 22-91 of human SCGB1A1 (NP_003348.1).
Sequence:	EICPSFQRVI ETLLMDTPSS YEAAMELFSP DQDMREAGAQ LKKLVDTLPQ KPRESIIKLM EKIAQSSLCN
Isotype:	IgG
Cross-Reactivity:	Mouse, Rat
Characteristics:	Polyclonal Antibodies
Purification:	Affinity purification

Target Details

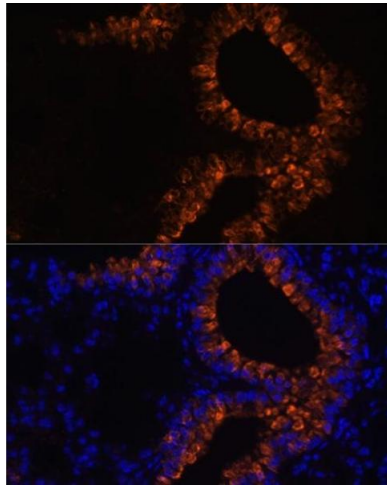
Target:	SCGB1A1
Alternative Name:	SCGB1A1 (SCGB1A1 Products)
Background:	<p>This gene encodes a member of the secretoglobin family of small secreted proteins. The encoded protein has been implicated in numerous functions including anti-inflammation, inhibition of phospholipase A2 and the sequestering of hydrophobic ligands. Defects in this gene are associated with a susceptibility to</p> <p>asthma.,SCGB1A1,CC10,CC16,CCPBP,CCSP,UGB,UP-1,UP1,Immunology & Inflammation,Cytokines,SCGB1A1</p>
Molecular Weight:	9kDa
Gene ID:	7356
UniProt:	P11684

Application Details

Application Notes:	WB,1:500 - 1:2000,IHC,1:50 - 1:200,IF,1:50 - 1:200
Restrictions:	For Research Use only

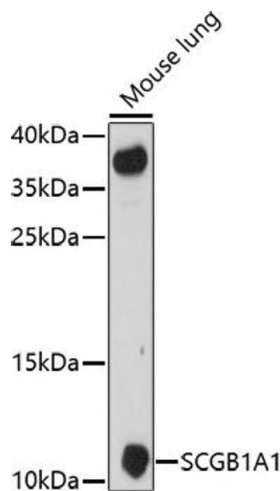
Handling

Format:	Liquid
Buffer:	PBS with 0.02 % sodium azide,50 % glycerol, pH 7.3.
Preservative:	Sodium azide
Precaution of Use:	This product contains Sodium azide: a POISONOUS AND HAZARDOUS SUBSTANCE which should be handled by trained staff only.
Storage:	-20 °C
Storage Comment:	Store at -20°C. Avoid freeze / thaw cycles.



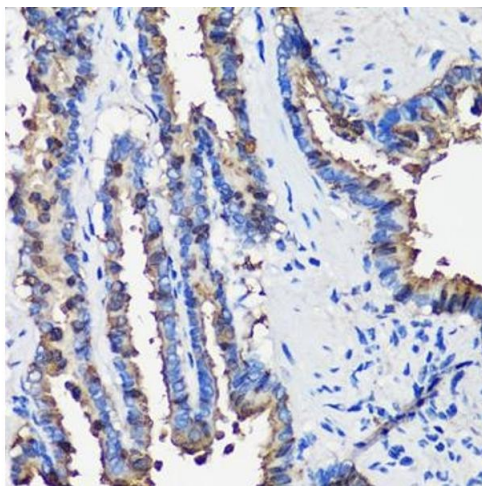
Immunofluorescence

Image 1. Immunofluorescence analysis of mouse lung cells using SCGB1 antibody (6997) at dilution of 1:100. Blue: DAPI for nuclear staining.



Western Blotting

Image 2. Western blot analysis of extracts of mouse lung, using SCGB1 antibody (6997) at 1:1000 dilution. Secondary antibody: HRP Goat Anti-Rabbit IgG (H+L) (ABIN1684268 and ABIN3020597) at 1:10000 dilution. Lysates/proteins: 25 µg per lane. Blocking buffer: 3 % nonfat dry milk in TBST. Detection: ECL Enhanced Kit (RM00021). Exposure time: 90s.



Immunohistochemistry

Image 3. Immunohistochemistry of paraffin-embedded rat lung using SCGB1 antibody (6997) at dilution of 1:100 (40x lens). Perform microwave antigen retrieval with 10 mM PBS buffer pH 7.2 before commencing with IHC staining protocol.

Please check the [product details page](#) for more images. Overall 4 images are available for ABIN7270184.