

## Datasheet for ABIN7270188 anti-SCAMP2 antibody (AA 1-152)



[Go to Product page](#)

### 4 Images

#### Overview

Quantity:	100 µL
Target:	SCAMP2
Binding Specificity:	AA 1-152
Reactivity:	Human
Host:	Rabbit
Clonality:	Polyclonal
Conjugate:	This SCAMP2 antibody is un-conjugated
Application:	Western Blotting (WB), Immunofluorescence (IF)

#### Product Details

Purpose:	SCAMP2 Rabbit pAb
Immunogen:	Recombinant fusion protein containing a sequence corresponding to amino acids 1-152 of human SCAMP2 (NP_005688.2).
Sequence:	MSAFDTNPFA DPVDVNPFD PSVTQLTNAP QGGLAEFNPF SETNAATTVP VTQLPGSSQP AVLQPSVEPT QPTPQAVVSA AQAGLLRQQE ELDRKAAELE RKERELQNTV ANLHVRQNNW PPLPSWCPVK PCFYQDFSTE IPADYQRICK ML
Isotype:	IgG
Cross-Reactivity:	Human, Mouse, Rat
Characteristics:	Polyclonal Antibodies
Purification:	Affinity purification

## Target Details

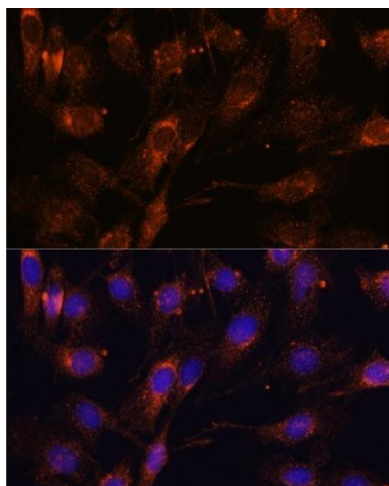
Target:	SCAMP2
Alternative Name:	SCAMP2 ( <a href="#">SCAMP2 Products</a> )
Background:	This gene product belongs to the SCAMP family of proteins which are secretory carrier membrane proteins. They function as carriers to the cell surface in post-golgi recycling pathways. Different family members are highly related products of distinct genes, and are usually expressed together. These findings suggest that the SCAMPs may function at the same site during vesicular transport rather than in separate pathways. Alternate splicing results in multiple transcript variants. [provided by RefSeq, Mar 2016],SCAMP2,Signal Transduction,Neuroscience,SCAMP2
Molecular Weight:	36kDa
Gene ID:	10066
UniProt:	<a href="#">O15127</a>

## Application Details

Application Notes:	WB,1:500 - 1:2000,IF,1:50 - 1:200
Restrictions:	For Research Use only

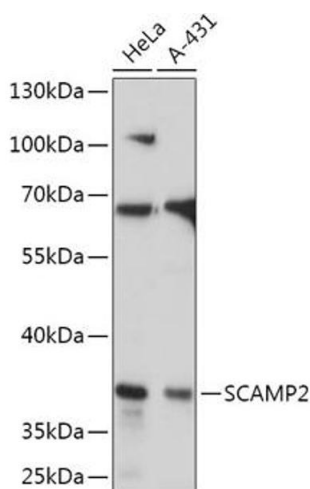
## Handling

Format:	Liquid
Buffer:	PBS with 0.02 % sodium azide,50 % glycerol, pH 7.3.
Preservative:	Sodium azide
Precaution of Use:	This product contains Sodium azide: a POISONOUS AND HAZARDOUS SUBSTANCE which should be handled by trained staff only.
Storage:	-20 °C
Storage Comment:	Store at -20°C. Avoid freeze / thaw cycles.



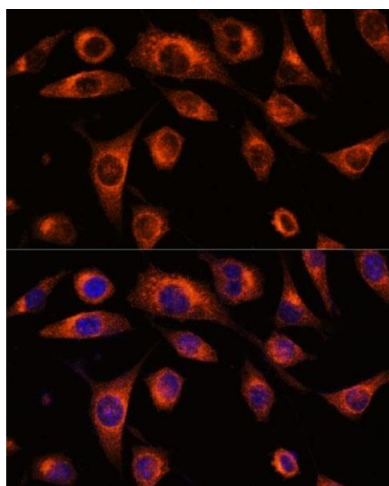
#### Immunofluorescence

**Image 1.** Immunofluorescence analysis of C6 cells using SC antibody (ABIN7270188) at dilution of 1:100. Blue: DAPI for nuclear staining.



#### Western Blotting

**Image 2.** Western blot analysis of extracts of various cell lines, using SC antibody (ABIN7270188) at 1:1000 dilution. Secondary antibody: HRP Goat Anti-Rabbit IgG (H+L) (ABIN1684268 and ABIN3020597) at 1:10000 dilution. Lysates/proteins: 25 µg per lane. Blocking buffer: 3 % nonfat dry milk in TBST. Detection: ECL Basic Kit (RM00020). Exposure time: 10s.



#### Immunofluorescence

**Image 3.** Immunofluorescence analysis of L929 cells using SC antibody (ABIN7270188) at dilution of 1:100. Blue: DAPI for nuclear staining.

Please check the [product details page](#) for more images. Overall 4 images are available for ABIN7270188.