



[Go to Product page](#)

Datasheet for ABIN7270195
anti-SELM antibody (AA 50-130)

1 Image

Overview

Quantity:	100 µL
Target:	SELM
Binding Specificity:	AA 50-130
Reactivity:	Human
Host:	Rabbit
Clonality:	Polyclonal
Conjugate:	This SELM antibody is un-conjugated
Application:	Western Blotting (WB)

Product Details

Purpose:	SELENOM Rabbit pAb
Immunogen:	Recombinant fusion protein containing a sequence corresponding to amino acids 50-130 of human SELENOM (NP_536355.1).
Sequence:	LNRLKEVKAF VTQDIPFYHN LVMKHLPGAD PELVLLGRRY EELERIPLSE MTREEINALV QELGFYRKAA PDAQVPPEYV W
Isotype:	IgG
Cross-Reactivity:	Human, Mouse
Characteristics:	Polyclonal Antibodies
Purification:	Affinity purification

Target Details

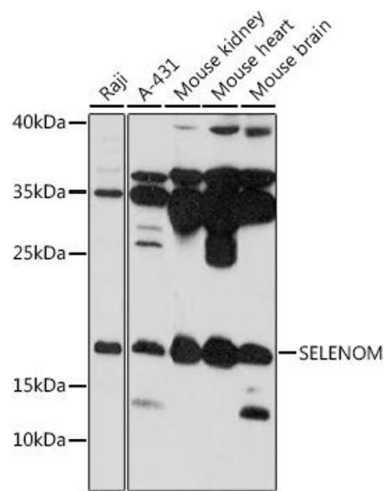
Target:	SELM
Alternative Name:	SELENOM (SELM Products)
Background:	<p>The protein encoded by this gene belongs to the selenoprotein M/SEP15 family. The exact function of this protein is not known. It is localized in the perinuclear region, is highly expressed in the brain, and may be involved in neurodegenerative disorders. Transgenic mice with targeted deletion of this gene exhibit increased weight gain, suggesting a role for this gene in the regulation of body weight and energy metabolism. This protein is a selenoprotein, containing the rare amino acid selenocysteine (Sec). Sec is encoded by the UGA codon, which normally signals translation termination. The 3' UTRs of selenoprotein mRNAs contain a conserved stem-loop structure, designated the Sec insertion sequence (SECIS) element, that is necessary for the recognition of UGA as a Sec codon, rather than as a stop signal.,SELENOM;SELM;SEPM,SELENOM</p>
Molecular Weight:	16kDa
Gene ID:	140606
UniProt:	Q8WWX9

Application Details

Application Notes:	WB,1:500 - 1:2000
Restrictions:	For Research Use only

Handling

Format:	Liquid
Buffer:	PBS with 0.02 % sodium azide,50 % glycerol, pH 7.3.
Preservative:	Sodium azide
Precaution of Use:	This product contains Sodium azide: a POISONOUS AND HAZARDOUS SUBSTANCE which should be handled by trained staff only.
Storage:	-20 °C
Storage Comment:	Store at -20°C. Avoid freeze / thaw cycles.



Western Blotting

Image 1. Western blot analysis of extracts of various cell lines, using SELENOM antibody (ABIN7270195) at 1:1000 dilution. Secondary antibody: HRP Goat Anti-Rabbit IgG (H+L) (ABIN1684268 and ABIN3020597) at 1:10000 dilution. Lysates/proteins: 25 µg per lane. Blocking buffer: 3 % nonfat dry milk in TBST. Detection: ECL Basic Kit (RM00020). Exposure time: 10s.