

Datasheet for ABIN7270226
anti-STK38L antibody (AA 165-464)



[Go to Product page](#)

2 Images

Overview

Quantity:	100 µL
Target:	STK38L
Binding Specificity:	AA 165-464
Reactivity:	Human
Host:	Rabbit
Clonality:	Polyclonal
Conjugate:	This STK38L antibody is un-conjugated
Application:	Western Blotting (WB), Immunofluorescence (IF)

Product Details

Purpose:	STK38L Rabbit pAb
Immunogen:	Recombinant fusion protein containing a sequence corresponding to amino acids 165-464 of human STK38L (NP_055815.1).
Sequence:	LIMEFLPGGD MMTLLMKKDT LTEEETQFYI SETVLAIDAI HQLGFIHRDI KPDNLLDDAK GHVKLSDFGL CTGLKKAHRT EFYRNLTHNP PSDFSQNMN SKRKAETWKK NRRQLAYSTV GTPDYIAPEV FMQTGYNKLC DWWSLGVIMY EMLIGYPPFC SETPQETYRK VMNWKETLVF PPEVPISEKA KDLILRFCID SENRIGNSGV EEIKGHPFFE GVDWEHIRER PAAIPIEIKS IDDTSNFDDF PESDILQPVP NTTEPDYKSK DWVFLNYTYK RFEGLTQRGS IPTYMKAGKL
Isotype:	IgG
Cross-Reactivity:	Human, Mouse, Rat
Characteristics:	Polyclonal Antibodies

Product Details

Purification: Affinity purification

Target Details

Target: STK38L

Alternative Name: STK38L ([STK38L Products](#))

Background: Involved in the regulation of structural processes in differentiating and mature neuronal cells.,STK38L,NDR2,Signal Transduction,Kinase,STK38L

Molecular Weight: 43kDa/54kDa

Gene ID: 23012

UniProt: [Q9Y2H1](#)

Application Details

Application Notes: WB,1:200 - 1:2000,IF,1:50 - 1:200

Restrictions: For Research Use only

Handling

Format: Liquid

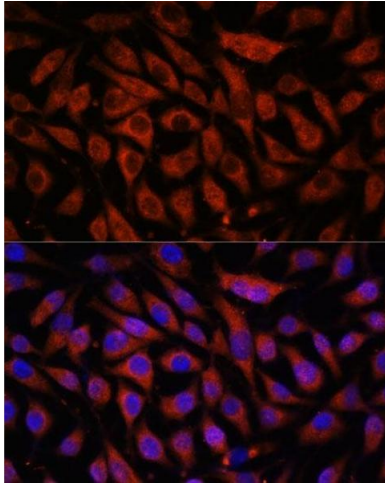
Buffer: PBS with 0.02 % sodium azide,50 % glycerol, pH 7.3.

Preservative: Sodium azide

Precaution of Use: This product contains Sodium azide: a POISONOUS AND HAZARDOUS SUBSTANCE which should be handled by trained staff only.

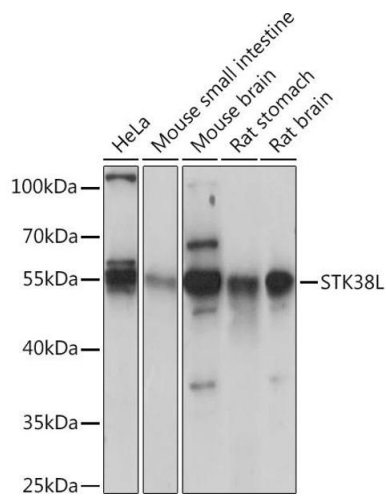
Storage: -20 °C

Storage Comment: Store at -20°C. Avoid freeze / thaw cycles.



Immunofluorescence

Image 1. Immunofluorescence analysis of L929 cells using STK38L antibody (ABIN7270226) at dilution of 1:100. Blue: DAPI for nuclear staining.



Western Blotting

Image 2. Western blot analysis of extracts of various cell lines, using STK38L Rabbit pAb (ABIN7270226) at 1:1000 dilution. Secondary antibody: HRP Goat Anti-Rabbit IgG (H+L) (ABIN1684268 and ABIN3020597) at 1:10000 dilution. Lysates/proteins: 25 µg per lane. Blocking buffer: 3 % nonfat dry milk in TBST. Detection: ECL Basic Kit (RM00020). Exposure time: 10s.