

Datasheet for ABIN7270255 anti-SAA1 antibody (AA 1-100)



[Go to Product page](#)

1 Image

Overview

Quantity:	100 µL
Target:	SAA1
Binding Specificity:	AA 1-100
Reactivity:	Human
Host:	Rabbit
Clonality:	Polyclonal
Conjugate:	This SAA1 antibody is un-conjugated
Application:	Western Blotting (WB), Immunohistochemistry (IHC)

Product Details

Purpose:	SAA1 Rabbit pAb
Immunogen:	A synthetic peptide corresponding to a sequence within amino acids 1-100 of human SAA1 (NP_000322.2).
Sequence:	MKLLTGLVFC SLVLGVSSRS FFSFLGEAFD GARDMWRAYS DMREANYIGS DKYFHARGNY DAAKRGP GGA WAAEVISDAR ENIQRRFFGHG AEDSLADQAA
Isotype:	IgG
Cross-Reactivity:	Mouse, Rat
Characteristics:	Polyclonal Antibodies
Purification:	Affinity purification

Target Details

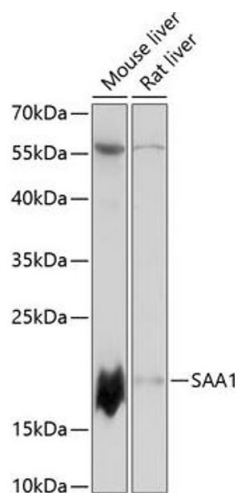
Target:	SAA1
Alternative Name:	SAA1 (SAA1 Products)
Background:	<p>This gene encodes a member of the serum amyloid A family of apolipoproteins. The encoded preproprotein is proteolytically processed to generate the mature protein. This protein is a major acute phase protein that is highly expressed in response to inflammation and tissue injury. This protein also plays an important role in HDL metabolism and cholesterol homeostasis. High levels of this protein are associated with chronic inflammatory diseases including atherosclerosis, rheumatoid arthritis, Alzheimer's disease and Crohn's disease. This protein may also be a potential biomarker for certain tumors. Alternate splicing results in multiple transcript variants that encode the same protein. A pseudogene of this gene is found on chromosome 11.,SAA1,PIG4,SAA,SAA2,TP53I4,Signal Transduction,G protein signaling,G-Protein-Coupled Receptors(GPCR),Immunology & Inflammation,Cytokines,Cell Intrinsic Innate Immunity Signaling Pathway,Cardiovascular,Lipids,Lipoproteins/Apolipoproteins,SAA1</p>
Molecular Weight:	13kDa
Gene ID:	6288
UniProt:	P0DJ18
Pathways:	Toll-Like Receptors Cascades

Application Details

Application Notes:	WB,1:500 - 1:2000,IHC,1:100 - 1:200
Restrictions:	For Research Use only

Handling

Format:	Liquid
Buffer:	PBS with 0.02 % sodium azide,50 % glycerol, pH 7.3.
Preservative:	Sodium azide
Precaution of Use:	This product contains Sodium azide: a POISONOUS AND HAZARDOUS SUBSTANCE which should be handled by trained staff only.
Storage:	-20 °C
Storage Comment:	Store at -20°C. Avoid freeze / thaw cycles.



Western Blotting

Image 1. Western blot analysis of extracts of various cell lines, using S antibody (ABIN7270255) at 1:3000 dilution. Secondary antibody: HRP Goat Anti-Rabbit IgG (H+L) (ABIN1684268 and ABIN3020597) at 1:10000 dilution. Lysates/proteins: 25 µg per lane. Blocking buffer: 3 % nonfat dry milk in TBST. Detection: ECL Basic Kit (RM00020). Exposure time: 30s.