

Datasheet for ABIN7270257
anti-SRF antibody (AA 1-280)



[Go to Product page](#)

1 Image

Overview

Quantity:	100 µL
Target:	SRF
Binding Specificity:	AA 1-280
Reactivity:	Human
Host:	Rabbit
Clonality:	Polyclonal
Conjugate:	This SRF antibody is un-conjugated
Application:	Western Blotting (WB)

Product Details

Purpose:	SRF Rabbit pAb
Immunogen:	Recombinant fusion protein containing a sequence corresponding to amino acids 1-280 of human SRF (NP_003122.1).
Sequence:	MLPTQAGAAA ALGRGSALGG SLNRTPTGRP GGGGGTRGAN GGRVPGNGAG LGPGLEREA AAAAATTPAP TAGALYSGSE GDSSESGEEEE LGAERRGLKR SLSEMEIGMV VGGPEASAAA TGGYGPVSGA VSGAKPGKKT RGRVKIKMEF IDNKLRRYTT FSKRKTGIMK KAYELSTLTG TQVLLLVASE TGHVYTFATR KLQPMITSET GKALIQTCLN SPDSPPRSDP TTDQRMSATG FEETDLTYQV SESDSSGETK DTLKPAFTVT NLPGTTSTIQ
Isotype:	IgG
Cross-Reactivity:	Human, Mouse
Characteristics:	Polyclonal Antibodies

Product Details

Purification: Affinity purification

Target Details

Target: SRF

Alternative Name: SRF ([SRF Products](#))

Background: This gene encodes a ubiquitous nuclear protein that stimulates both cell proliferation and differentiation. It is a member of the MADS (MCM1, Agamous, Deficiens, and SRF) box superfamily of transcription factors. This protein binds to the serum response element (SRE) in the promoter region of target genes. This protein regulates the activity of many immediate-early genes, for example c-fos, and thereby participates in cell cycle regulation, apoptosis, cell growth, and cell differentiation. This gene is the downstream target of many pathways, for example, the mitogen-activated protein kinase pathway (MAPK) that acts through the ternary complex factors (TCFs). Two transcript variants encoding different isoforms have been found for this gene.,SRF,MCM1,Epigenetics & Nuclear Signaling,Transcription Factors,Signal Transduction,MAPK-Erk Signaling Pathway,Cell Biology & Developmental Biology,Stem Cells,Cardiovascular,Heart,Cardiogenesis,SRF

Molecular Weight: 51kDa

Gene ID: 6722

UniProt: [P11831](#)

Application Details

Application Notes: WB,1:500 - 1:2000

Restrictions: For Research Use only

Handling

Format: Liquid

Buffer: PBS with 0.02 % sodium azide,50 % glycerol, pH 7.3.

Preservative: Sodium azide

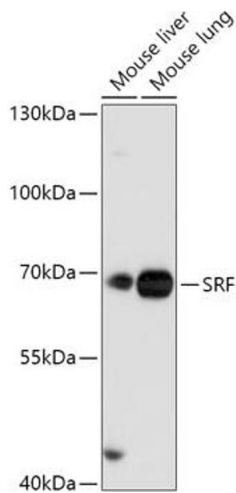
Precaution of Use: This product contains Sodium azide: a POISONOUS AND HAZARDOUS SUBSTANCE which should be handled by trained staff only.

Storage: -20 °C

Handling

Storage Comment: Store at -20°C. Avoid freeze / thaw cycles.

Images



Western Blotting

Image 1. Western blot analysis of extracts of various cell lines, using SRF antibody (ABIN7270257) at 1:1000 dilution. Secondary antibody: HRP Goat Anti-Rabbit IgG (H+L) (ABIN1684268 and ABIN3020597) at 1:10000 dilution. Lysates/proteins: 25 µg per lane. Blocking buffer: 3 % nonfat dry milk in TBST. Detection: ECL Enhanced Kit (RM00021). Exposure time: 180s.