



[Go to Product page](#)

Datasheet for ABIN7270270
anti-SUGT1 antibody (AA 159-333)

1 Image

Overview

Quantity:	100 µL
Target:	SUGT1
Binding Specificity:	AA 159-333
Reactivity:	Human
Host:	Rabbit
Clonality:	Polyclonal
Conjugate:	This SUGT1 antibody is un-conjugated
Application:	Western Blotting (WB)

Product Details

Purpose:	SUGT1 Rabbit pAb
Immunogen:	Recombinant fusion protein containing a sequence corresponding to amino acids 159-333 of human SUGT1 (NP_006695.1).
Sequence:	NVQKNDVNVE FSEKELSALV KLPSGEDYNL KLELLHPIIP EQSTFKVLST KIEIKLKKPE AVRWEKLEGQ GDVPTPKQFV ADVKNLYPSS SPYTRNWDKL VGEIKEEEKN EKLEGDAALN RLFQQIYSDG SDEVKRAMNK SFMESGGTVL STNWSVDVGKR KVEINPPDDM EWKKY
Isotype:	IgG
Cross-Reactivity:	Human, Mouse, Rat
Characteristics:	Polyclonal Antibodies
Purification:	Affinity purification

Target Details

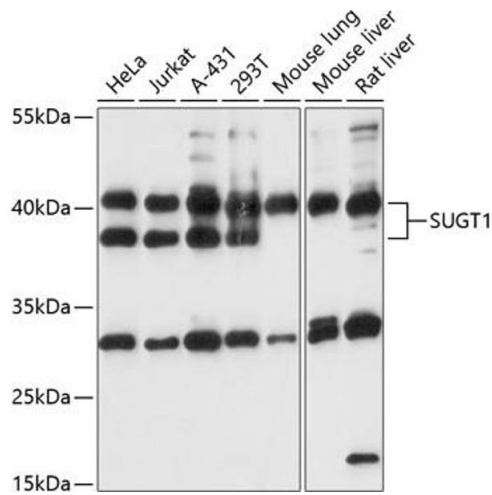
Target:	SUGT1
Alternative Name:	SUGT1 (SUGT1 Products)
Background:	This gene encodes a highly conserved nuclear protein involved in kinetochore function and required for the G1/S and G2/M transitions. This protein interacts with heat shock protein 90. Alternative splicing results in multiple transcript variants. Pseudogenes for this gene have been defined on several different chromosomes.,SUGT1,SGT1,Epigenetics & Nuclear Signaling,Cell Biology & Developmental Biology,Apoptosis,Cell Cycle,SUGT1
Molecular Weight:	37kDa/41kDa
Gene ID:	10910
UniProt:	Q9Y2Z0

Application Details

Application Notes:	WB,1:200 - 1:2000
Restrictions:	For Research Use only

Handling

Format:	Liquid
Buffer:	PBS with 0.02 % sodium azide,50 % glycerol, pH 7.3.
Preservative:	Sodium azide
Precaution of Use:	This product contains Sodium azide: a POISONOUS AND HAZARDOUS SUBSTANCE which should be handled by trained staff only.
Storage:	-20 °C
Storage Comment:	Store at -20°C. Avoid freeze / thaw cycles.



Western Blotting

Image 1. Western blot analysis of extracts of various cell lines, using SUGT1 antibody (ABIN7270270) at 1:1000 dilution. Secondary antibody: HRP Goat Anti-Rabbit IgG (H+L) (ABIN1684268 and ABIN3020597) at 1:10000 dilution. Lysates/proteins: 25 µg per lane. Blocking buffer: 3 % nonfat dry milk in TBST. Detection: ECL Basic Kit (RM00020). Exposure time: 30s.