

Datasheet for ABIN7270286

**anti-SHOX antibody**

## 2 Images

[Go to Product page](#)

## Overview

Quantity:	100 µL
Target:	SHOX
Reactivity:	Human
Host:	Rabbit
Clonality:	Polyclonal
Conjugate:	This SHOX antibody is un-conjugated
Application:	Western Blotting (WB)

## Product Details

Purpose:	SHOX Rabbit pAb
Immunogen:	A synthetic Peptide of human SHOX
Isotype:	IgG
Cross-Reactivity:	Human, Mouse, Rat
Characteristics:	Polyclonal Antibodies
Purification:	Affinity purification

## Target Details

Target:	SHOX
Alternative Name:	SHOX ( <a href="#">SHOX Products</a> )
Background:	This gene belongs to the paired homeobox family and is located in the pseudoautosomal

## Target Details

region 1 (PAR1) of X and Y chromosomes. Defects in this gene are associated with idiopathic growth retardation and in the short stature phenotype of Turner syndrome patients. This gene is highly conserved across species from mammals to fish to flies. Alternatively spliced transcript variants encoding different isoforms have been noted for this gene.,SHOX,GCFX,PHOG,SHOXY,SS,Epigenetics & Nuclear Signaling,Transcription Factors,Signal Transduction,Cell Biology & Developmental Biology,Growth factor,SHOX

Molecular Weight: 25kDa/32kDa

Gene ID: 6473

UniProt: [O15266](#)

## Application Details

Application Notes: WB,1:500 - 1:2000

Restrictions: For Research Use only

## Handling

Format: Liquid

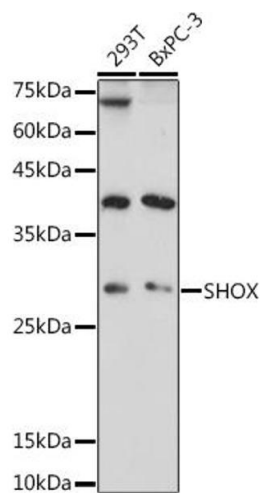
Buffer: PBS with 0.02 % sodium azide, pH 7.3.

Preservative: Sodium azide

Precaution of Use: This product contains Sodium azide: a POISONOUS AND HAZARDOUS SUBSTANCE which should be handled by trained staff only.

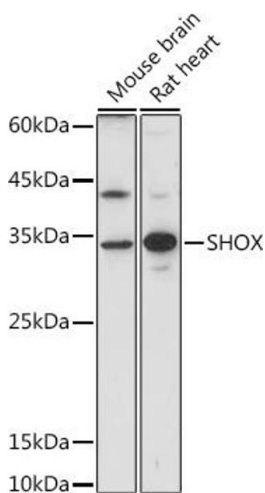
Storage: 4 °C

Storage Comment: Store at 4°C. Avoid freeze / thaw cycles.



#### Western Blotting

**Image 1.** Western blot analysis of extracts of various cell lines, using SHOX antibody (ABIN7270286) at 1:1000 dilution. Secondary antibody: HRP Goat Anti-Rabbit IgG (H+L) (ABIN1684268 and ABIN3020597) at 1:10000 dilution. Lysates/proteins: 25 µg per lane. Blocking buffer: 3 % nonfat dry milk in TBST. Detection: ECL Basic Kit (RM00020). Exposure time: 60s.



#### Western Blotting

**Image 2.** Western blot analysis of extracts of various cell lines, using SHOX antibody (ABIN7270286) at 1:1000 dilution. Secondary antibody: HRP Goat Anti-Rabbit IgG (H+L) (ABIN1684268 and ABIN3020597) at 1:10000 dilution. Lysates/proteins: 25 µg per lane. Blocking buffer: 3 % nonfat dry milk in TBST. Detection: ECL Basic Kit (RM00020). Exposure time: 10s.