

Datasheet for ABIN7270296
anti-SIGMAR1 antibody (AA 31-80)[Go to Product page](#)

1 Image

Overview

Quantity:	100 µL
Target:	SIGMAR1
Binding Specificity:	AA 31-80
Reactivity:	Human
Host:	Rabbit
Clonality:	Polyclonal
Conjugate:	This SIGMAR1 antibody is un-conjugated
Application:	Western Blotting (WB)

Product Details

Purpose:	SIGMAR1 Rabbit pAb
Immunogen:	Recombinant fusion protein containing a sequence corresponding to amino acids 31-80 of human SIGMAR1 (NP_005857.1).
Sequence:	GTQSFVFQRE EIAQLARQYA GLDHELAFSR LIVELRRLHP GHVLPDEELQ
Isotype:	IgG
Cross-Reactivity:	Human, Rat
Characteristics:	Polyclonal Antibodies
Purification:	Affinity purification

Target Details

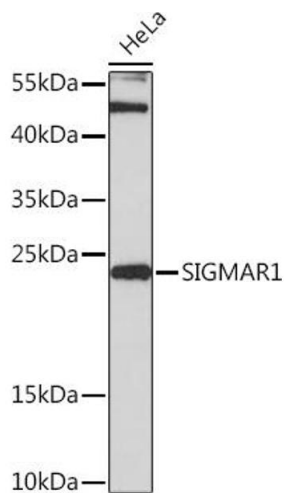
Target:	SIGMAR1
Alternative Name:	SIGMAR1 (SIGMAR1 Products)
Background:	<p>This gene encodes a receptor protein that interacts with a variety of psychotomimetic drugs, including cocaine and amphetamines. The receptor is believed to play an important role in the cellular functions of various tissues associated with the endocrine, immune, and nervous systems. As indicated by its previous name, opioid receptor sigma 1 (OPRS1), the product of this gene was erroneously thought to function as an opioid receptor, it is now thought to be a non-opioid receptor. Mutations in this gene has been associated with juvenile amyotrophic lateral sclerosis 16. Alternative splicing of this gene results in transcript variants encoding distinct isoforms.,SIGMAR1,ALS16,DSMA2,OPRS1,SIG-1R,SR-BP,SR-BP1,SRBP,hSigmaR1,sigma1R,Cancer,Tumor biomarkers,Signal Transduction,Endocrine & Metabolism,Neuroscience,Neurodegenerative Diseases,Amyloid Plaque and Neurofibrillary Tangle Formation in Alzheimer's Disease,Cardiovascular,Heart,Cardiac metabolism,Hypertrophy,SIGMAR1</p>
Molecular Weight:	11kDa/21kDa/22kDa/25kDa
Gene ID:	10280
UniProt:	Q99720
Pathways:	SARS-CoV-2 Protein Interactome

Application Details

Application Notes:	WB,1:500 - 1:2000
Restrictions:	For Research Use only

Handling

Format:	Liquid
Buffer:	PBS with 0.02 % sodium azide,50 % glycerol, pH 7.3.
Preservative:	Sodium azide
Precaution of Use:	This product contains Sodium azide: a POISONOUS AND HAZARDOUS SUBSTANCE which should be handled by trained staff only.
Storage:	-20 °C
Storage Comment:	Store at -20°C. Avoid freeze / thaw cycles.



Western Blotting

Image 1. Western blot analysis of extracts of HeLa cells, using SIGM Rabbit pAb (ABIN7270296) at 1:3000 dilution. Secondary antibody: HRP Goat Anti-Rabbit IgG (H+L) (ABIN1684268 and ABIN3020597) at 1:10000 dilution. Lysates/proteins: 25 µg per lane. Blocking buffer: 3 % nonfat dry milk in TBST. Detection: ECL Basic Kit (RM00020). Exposure time: 90s.