

Datasheet for ABIN7270305

**anti-STAT3 antibody**

## 7 Images

[Go to Product page](#)

## Overview

Quantity:	100 µL
Target:	STAT3
Reactivity:	Human
Host:	Rabbit
Clonality:	Monoclonal
Conjugate:	This STAT3 antibody is un-conjugated
Application:	Western Blotting (WB), Immunohistochemistry (IHC), Immunoprecipitation (IP), Immunofluorescence (IF)

## Product Details

Purpose:	[KO Validated] STAT3 Rabbit mAb
Immunogen:	A synthesized peptide derived from human STAT3.
Isotype:	IgG
Cross-Reactivity:	Human, Mouse, Rat
Characteristics:	Monoclonal Antibodies
Purification:	Affinity purification
Grade:	KO Validated

## Target Details

Target:	STAT3
---------	-------

## Target Details

Alternative Name:	STAT3 ( <a href="#">STAT3 Products</a> )
Background:	<p>The protein encoded by this gene is a member of the STAT protein family. In response to cytokines and growth factors, STAT family members are phosphorylated by the receptor associated kinases, and then form homo- or heterodimers that translocate to the cell nucleus where they act as transcription activators. This protein is activated through phosphorylation in response to various cytokines and growth factors including IFNs, EGF, IL5, IL6, HGF, LIF and BMP2. This protein mediates the expression of a variety of genes in response to cell stimuli, and thus plays a key role in many cellular processes such as cell growth and apoptosis. The small GTPase Rac1 has been shown to bind and regulate the activity of this protein. PIAS3 protein is a specific inhibitor of this protein. Mutations in this gene are associated with infantile-onset multisystem autoimmune disease and hyper-immunoglobulin E syndrome. Alternative splicing results in multiple transcript variants encoding distinct isoforms. [provided by RefSeq, Sep 2015],ADMIO,ADMIO1,APRF,HIES,STAT3,Stat3,Apoptosis,Apoptosis_Inhibition of Apoptosis,Cancer,Cardiovascular,Cell Biology &amp; Developmental Biology,Cytoskeleton_Microtubules,Embryonic Stem Cells,Epigenetics &amp; Nuclear Signaling,ErbB-HER Signaling Pathway,Heart,Heart_Cardiogenesis,Heart_Hypertrophy,IL-6 Receptor Signaling Pathway,Immunology &amp; Inflammation,MAPK-Erk Signaling Pathway,MAPK-JNK Signaling Pathway,Protein phosphorylation,Signal Transduction,Stem Cells,Transcription Factors,STAT3</p>
Molecular Weight:	88kDa
Gene ID:	6774
UniProt:	<a href="#">P40763</a>
Pathways:	<a href="#">JAK-STAT Signaling</a> , <a href="#">RTK Signaling</a> , <a href="#">Interferon-gamma Pathway</a> , <a href="#">Neurotrophin Signaling Pathway</a> , <a href="#">Dopaminergic Neurogenesis</a> , <a href="#">Response to Growth Hormone Stimulus</a> , <a href="#">Carbohydrate Homeostasis</a> , <a href="#">Stem Cell Maintenance</a> , <a href="#">Hepatitis C</a> , <a href="#">Protein targeting to Nucleus</a> , <a href="#">Feeding Behaviour</a> , <a href="#">CXCR4-mediated Signaling Events</a> , <a href="#">Signaling of Hepatocyte Growth Factor Receptor</a>

## Application Details

Application Notes:	WB,1:500 - 1:2000,IHC,1:50 - 1:200,IF,1:50 - 1:200,IP,1:50 - 1:200
Restrictions:	For Research Use only

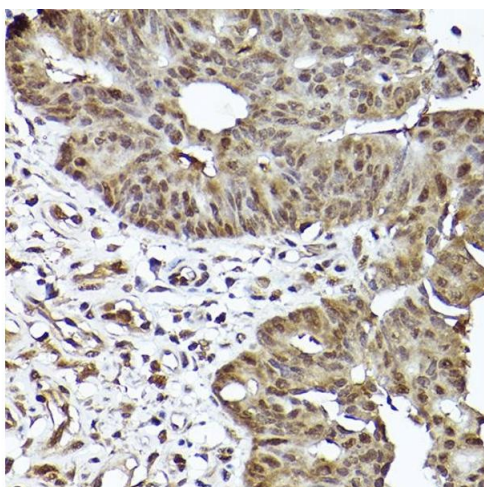
## Handling

Format:	Liquid
---------	--------

## Handling

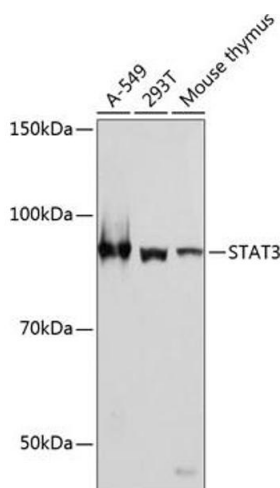
Buffer:	PBS with 0.02 % sodium azide, 0.05 % BSA, 50 % glycerol, pH 7.3.
Preservative:	Sodium azide
Precaution of Use:	This product contains Sodium azide: a POISONOUS AND HAZARDOUS SUBSTANCE which should be handled by trained staff only.
Storage:	-20 °C
Storage Comment:	Store at -20°C. Avoid freeze / thaw cycles.

## Images



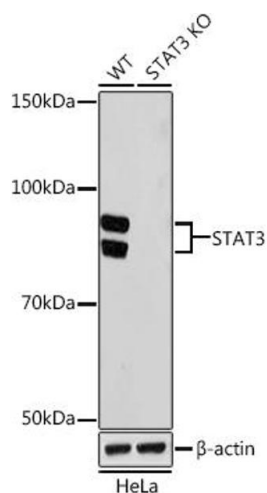
### Immunohistochemistry

**Image 1.** Immunohistochemistry of paraffin-embedded human colon carcinoma using [KO Validated] ST Rabbit mAb (ABIN7270305) at dilution of 1:100 (40x lens). Perform high pressure antigen retrieval with 10 mM citrate buffer pH 6.0 before commencing with IHC staining protocol.



### Western Blotting

**Image 2.** Western blot analysis of extracts of various cell lines, using ST antibody (ABIN7270305) at 1:1000 dilution. Secondary antibody: HRP Goat Anti-Rabbit IgG (H+L) (ABIN1684268 and ABIN3020597) at 1:10000 dilution. Lysates/proteins: 25 µg per lane. Blocking buffer: 3 % nonfat dry milk in TBST. Detection: ECL Basic Kit (RM00020). Exposure time: 1 min.



### Western Blotting

**Image 3.** Western blot analysis of extracts from wild type (WT) and ST knockout (KO) HeLa cells, using ST antibody (ABIN7270305) at 1:1000 dilution. Secondary antibody: HRP Goat Anti-Rabbit IgG (H+L) (ABIN1684268 and ABIN3020597) at 1:10000 dilution. Lysates/proteins: 25 µg per lane. Blocking buffer: 3 % nonfat dry milk in TBST. Detection: ECL Basic Kit (RM00020). Exposure time: 1 min.

Please check the [product details page](#) for more images. Overall 7 images are available for ABIN7270305.