



[Go to Product page](#)

Datasheet for ABIN7270317
anti-FCHSD1 antibody (AA 100-400)

3 Images

Overview

Quantity:	100 µL
Target:	FCHSD1
Binding Specificity:	AA 100-400
Reactivity:	Human
Host:	Rabbit
Clonality:	Polyclonal
Conjugate:	This FCHSD1 antibody is un-conjugated
Application:	Western Blotting (WB), Immunohistochemistry (IHC)

Product Details

Purpose:	FCHSD1 Rabbit pAb
Immunogen:	Recombinant fusion protein containing a sequence corresponding to amino acids 100-400 of human FCHSD1 (NP_258260.1).
Sequence:	RLQASDRYRD LAGGTGRSAK EQVLRKGTEN LQRAQAEVLQ SVRELSRSRK LYGQRERVWA LAQEKAADVQ ARLNRSDHGI FHSRTSLQKL STKLSAQSAQ YSQQQAARN EYLLNLVATN AHLDHYYQEE LPALLKALVS ELSEHLRDPL TSLSHTELEA AEVILEHAHR GEQTTSQVSW EQDLKFLQE PGVFSPTPPQ QFQPAGTDQV CVLEWGAEGV AGKSGLEKEV QRLTSRAARD YKIQNHGHRV LQRLEQRRQ ASEREAPSIE QRLQEVRESI RRAQVSQVKG AARLALLQGA G
Isotype:	IgG
Cross-Reactivity:	Human, Mouse, Rat
Characteristics:	Polyclonal Antibodies

Product Details

Purification: Affinity purification

Target Details

Target: FCHSD1

Alternative Name: FCHSD1 ([FCHSD1 Products](#))

Background: Promotes actin polymerization mediated by SNX9 and WASL.,FCHSD1,NWK2,Cell Biology & Developmental Biology,FCHSD1

Molecular Weight: 40kDa/46kDa/76kDa

Gene ID: 89848

UniProt: [Q86WN1](#)

Application Details

Application Notes: WB,1:200 - 1:2000,IHC,1:50 - 1:200

Restrictions: For Research Use only

Handling

Format: Liquid

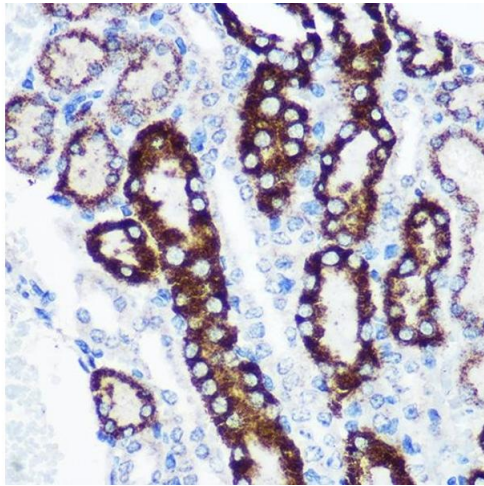
Buffer: PBS with 0.02 % sodium azide,50 % glycerol, pH 7.3.

Preservative: Sodium azide

Precaution of Use: This product contains Sodium azide: a POISONOUS AND HAZARDOUS SUBSTANCE which should be handled by trained staff only.

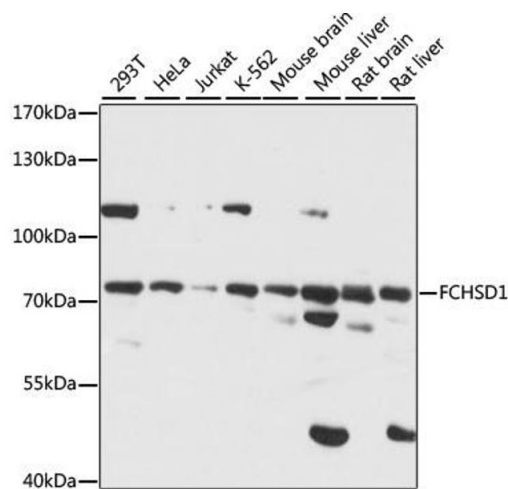
Storage: -20 °C

Storage Comment: Store at -20°C. Avoid freeze / thaw cycles.



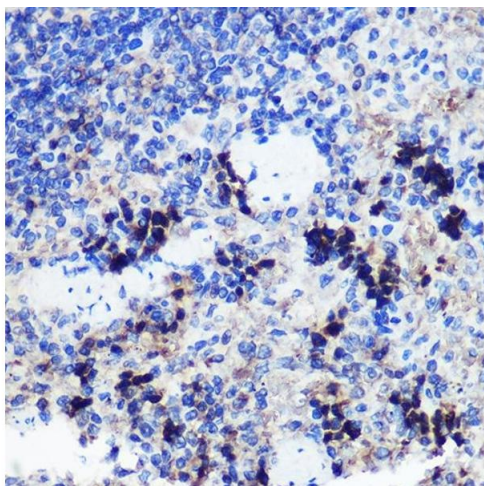
Immunohistochemistry

Image 1. Immunohistochemistry of paraffin-embedded Mouse kidney using FCHSD1 Rabbit pAb (ABIN7270317) at dilution of 1:100 (40x lens). Perform microwave antigen retrieval with 10 mM PBS buffer pH 7.2 before commencing with IHC staining protocol.



Western Blotting

Image 2. Western blot analysis of extracts of various cell lines, using FCHSD1 antibody (ABIN7270317) at 1:1000 dilution. Secondary antibody: HRP Goat Anti-Rabbit IgG (H+L) (ABIN1684268 and ABIN3020597) at 1:10000 dilution. Lysates/proteins: 25 µg per lane. Blocking buffer: 3 % nonfat dry milk in TBST. Detection: ECL Basic Kit (RM00020). Exposure time: 15S.



Immunohistochemistry

Image 3. Immunohistochemistry of paraffin-embedded Rat spleen using FCHSD1 Rabbit pAb (ABIN7270317) at dilution of 1:100 (40x lens). Perform microwave antigen retrieval with 10 mM PBS buffer pH 7.2 before commencing with IHC staining protocol.