



[Go to Product page](#)

Datasheet for ABIN7270322

anti-SIRT1 antibody

4 Images

Overview

Quantity:	100 µL
Target:	SIRT1
Reactivity:	Human
Host:	Rabbit
Clonality:	Polyclonal
Conjugate:	This SIRT1 antibody is un-conjugated
Application:	Western Blotting (WB), Immunohistochemistry (IHC), Immunoprecipitation (IP), Immunofluorescence (IF), Chromatin Immunoprecipitation (ChIP)

Product Details

Purpose:	[KO Validated] SIRT1 Rabbit pAb
Immunogen:	A synthetic peptide of human SIRT1
Isotype:	IgG
Cross-Reactivity:	Human, Mouse, Rat
Characteristics:	Polyclonal Antibodies
Purification:	Affinity purification
Grade:	KO Validated

Target Details

Target:	SIRT1
---------	-------

Target Details

Alternative Name: [SIRT1 \(SIRT1 Products\)](#)

Background: This gene encodes a member of the sirtuin family of proteins, homologs to the yeast Sir2 protein. Members of the sirtuin family are characterized by a sirtuin core domain and grouped into four classes. The functions of human sirtuins have not yet been determined, however, yeast sirtuin proteins are known to regulate epigenetic gene silencing and suppress recombination of rDNA. Studies suggest that the human sirtuins may function as intracellular regulatory proteins with mono-ADP-ribosyltransferase activity. The protein encoded by this gene is included in class I of the sirtuin family. Alternative splicing results in multiple transcript variants.,SIR2,SIR2L1,SIR2alpha,SIRT1,sirtuin 1,Epigenetics & Nuclear Signaling,Chromatin Modifying Enzymes,Deacetylation,Cell Biology & Developmental Biology,Apoptosis,Endocrine & Metabolism,Mitochondrial metabolism,AMPK Signaling Pathway,SIRT1

Molecular Weight: 61kDa/81kDa

Gene ID: 23411

UniProt: [Q96EB6](#)

Pathways: [MAPK Signaling](#), [Intracellular Steroid Hormone Receptor Signaling Pathway](#), [Regulation of Intracellular Steroid Hormone Receptor Signaling](#), [Carbohydrate Homeostasis](#), [Positive Regulation of Endopeptidase Activity](#), [Regulation of Carbohydrate Metabolic Process](#), [Positive Regulation of Response to DNA Damage Stimulus](#), [Negative Regulation of intrinsic apoptotic Signaling](#)

Application Details

Application Notes: WB,1:500 - 1:2000,IHC,1:50 - 1:200,IF,1:50 - 1:200,IP,1:50 - 1:200,ChIP,1:50 - 1:200

Restrictions: For Research Use only

Handling

Format: Liquid

Buffer: PBS with 0.02 % sodium azide,50 % glycerol, pH 7.3.

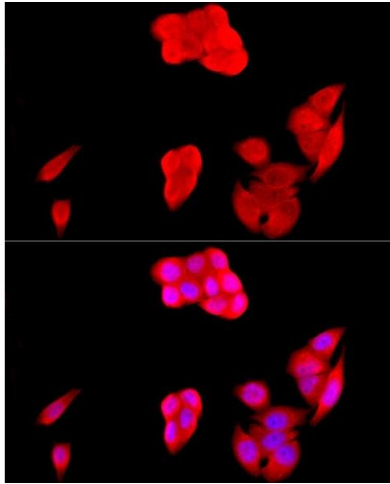
Preservative: Sodium azide

Precaution of Use: This product contains Sodium azide: a POISONOUS AND HAZARDOUS SUBSTANCE which should be handled by trained staff only.

Storage: -20 °C

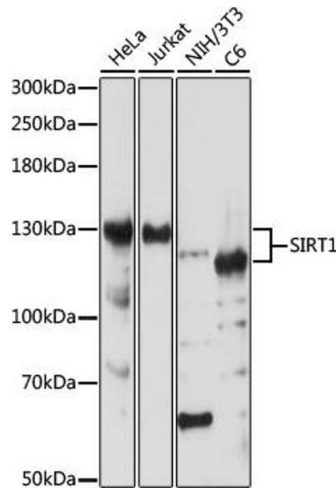
Storage Comment: Store at -20°C. Avoid freeze / thaw cycles.

Images



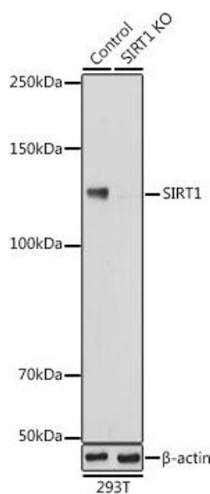
Immunofluorescence

Image 1. Immunofluorescence analysis of HeLa cells using [KO Validated] SIRT1 Rabbit pAb (ABIN7270322) at dilution of 1:200 (40x lens). Blue: DAPI for nuclear staining.



Western Blotting

Image 2. Western blot analysis of extracts of various cell lines, using SIRT1 antibody (ABIN7270322) at 1:1000 dilution. Secondary antibody: HRP Goat Anti-Rabbit IgG (H+L) (ABIN1684268 and ABIN3020597) at 1:10000 dilution. Lysates/proteins: 25 µg per lane. Blocking buffer: 3 % nonfat dry milk in TBST. Detection: ECL Basic Kit (RM00020). Exposure time: 30s.



Western Blotting

Image 3. Western blot analysis of extracts from normal (control) and SIRT1 knockout (KO) 293T cells, using SIRT1 antibody (ABIN7270322) at 1:1000 dilution. Secondary antibody: HRP Goat Anti-Rabbit IgG (H+L) (ABIN1684268 and ABIN3020597) at 1:10000 dilution. Lysates/proteins: 25 µg per lane. Blocking buffer: 3 % nonfat dry milk in TBST. Detection: ECL Basic Kit (RM00020). Exposure time: 1s.

Please check the [product details page](#) for more images. Overall 4 images are available for ABIN7270322.