

Datasheet for ABIN7270340

**anti-SMAD4 antibody**

## 6 Images

[Go to Product page](#)

## Overview

Quantity:	100 µL
Target:	SMAD4
Reactivity:	Human
Host:	Rabbit
Clonality:	Monoclonal
Conjugate:	This SMAD4 antibody is un-conjugated
Application:	Western Blotting (WB), Immunohistochemistry (IHC), Immunoprecipitation (IP)

## Product Details

Purpose:	[KO Validated] Smad4 Rabbit mAb
Immunogen:	Recombinant protein of human Smad4.
Isotype:	IgG
Cross-Reactivity:	Human, Mouse, Rat
Characteristics:	Monoclonal Antibodies
Purification:	Affinity purification
Grade:	KO Validated

## Target Details

Target:	SMAD4
Alternative Name:	SMAD4 ( <a href="#">SMAD4 Products</a> )

## Target Details

Background:	<p>This gene encodes a member of the Smad family of signal transduction proteins. Smad proteins are phosphorylated and activated by transmembrane serine-threonine receptor kinases in response to TGF-beta signaling. The product of this gene forms homomeric complexes and heteromeric complexes with other activated Smad proteins, which then accumulate in the nucleus and regulate the transcription of target genes. This protein binds to DNA and recognizes an 8-bp palindromic sequence (GTCTAGAC) called the Smad-binding element (SBE). The Smad proteins are subject to complex regulation by post-translational modifications. Mutations or deletions in this gene have been shown to result in pancreatic cancer, juvenile polyposis syndrome, and hereditary hemorrhagic telangiectasia syndrome.</p> <p>[provided by RefSeq, Oct 2009],DPC4,JIP,MADH4,MYHRS,Smad4,SMAD4,Apoptosis,Cancer,Cardiovascular,Cell Biology &amp; Developmental Biology,Cell Cycle,Endocrine &amp; Metabolism,Epigenetics &amp; Nuclear Signaling,ESC Pluripotency and Differentiation,G1/S Checkpoint,Heart,Heart_Cardiogenesis,Heart_Hypertrophy,Hypoxia,MAPK-JNK Signaling Pathway,Signal Transduction,Stem Cells,TGF-b-Smad Signaling Pathway,TGF-b-Smad Signaling Pathway_SMADs,Transcription Factors,Tumor suppressors,SMAD4</p>
Molecular Weight:	65kDa
Gene ID:	4089
UniProt:	<a href="#">Q13485</a>
Pathways:	<a href="#">Cell Division Cycle</a> , <a href="#">Chromatin Binding</a> , <a href="#">Autophagy</a>

## Application Details

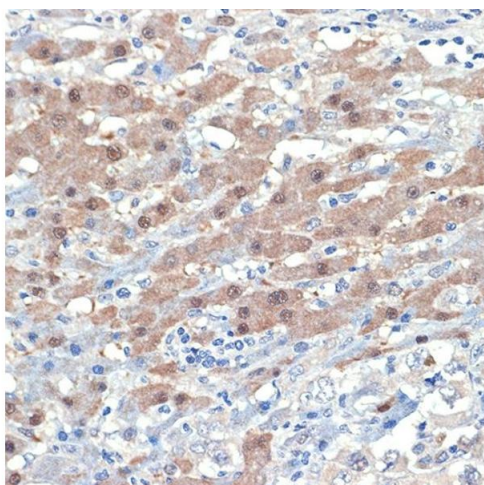
Application Notes:	WB,1:500 - 1:2000,IHC,1:50 - 1:200,IP,1:50 - 1:200
Restrictions:	For Research Use only

## Handling

Format:	Liquid
Buffer:	PBS with 0.02 % sodium azide,0.05 % BSA,50 % glycerol, pH 7.3.
Preservative:	Sodium azide
Precaution of Use:	This product contains Sodium azide: a POISONOUS AND HAZARDOUS SUBSTANCE which should be handled by trained staff only.
Storage:	-20 °C

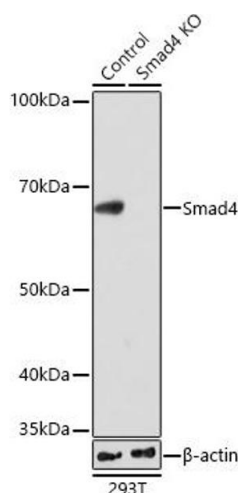
Storage Comment: Store at -20°C. Avoid freeze / thaw cycles.

## Images



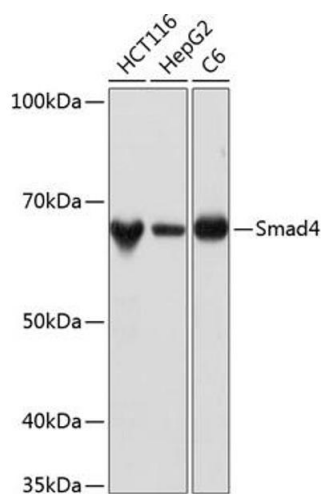
## Immunohistochemistry

**Image 1.** Immunohistochemistry of paraffin-embedded human liver cancer using [KO Validated] Smad4 Rabbit mAb (ABIN7270340) at dilution of 1:100 (40x lens). Perform microwave antigen retrieval with 10 mM Tris/EDTA buffer pH 9.0 before commencing with IHC staining protocol.



## Western Blotting

**Image 2.** Western blot analysis of extracts from wild type (WT) and Smad4 knockout (KO) 293T cells, using Smad4 antibody (ABIN7270340) at 1:1000 dilution. Secondary antibody: HRP Goat Anti-Rabbit IgG (H+L) (ABIN1684268 and ABIN3020597) at 1:10000 dilution. Lysates/proteins: 25 µg per lane. Blocking buffer: 3 % nonfat dry milk in TBST. Detection: ECL Basic Kit (RM00020). Exposure time: 10s.



## Western Blotting

**Image 3.** Western blot analysis of extracts of various cell lines, using Smad4 antibody (ABIN7270340) at 1:1000 dilution. Secondary antibody: HRP Goat Anti-Rabbit IgG (H+L) (ABIN1684268 and ABIN3020597) at 1:10000 dilution. Lysates/proteins: 25 µg per lane. Blocking buffer: 3 % nonfat dry milk in TBST. Detection: ECL Basic Kit (RM00020). Exposure time: 10s.

Please check the [product details page](#) for more images. Overall 6 images are available for ABIN7270340.