

Datasheet for ABIN7270372

anti-SUMO4 antibody

4 Images

[Go to Product page](#)

Overview

Quantity:	100 µL
Target:	SUMO4
Reactivity:	Human
Host:	Rabbit
Clonality:	Monoclonal
Conjugate:	This SUMO4 antibody is un-conjugated
Application:	Western Blotting (WB), Immunohistochemistry (IHC), Immunofluorescence (IF)

Product Details

Purpose:	SUMO4 Rabbit mAb
Immunogen:	A synthesized peptide derived from human SUMO4
Isotype:	IgG
Cross-Reactivity:	Human, Mouse, Rat
Characteristics:	Monoclonal Antibodies
Purification:	Affinity purification

Target Details

Target:	SUMO4
Alternative Name:	SUMO4 (SUMO4 Products)
Background:	This gene is a member of the SUMO gene family. This family of genes encode small ubiquitin-

Target Details

related modifiers that are attached to proteins and control the target proteins' subcellular localization, stability, or activity. The protein described in this record is located in the cytoplasm and specifically modifies IKBA, leading to negative regulation of NF-kappa-B-dependent transcription of the IL12B gene. A specific polymorphism in this SUMO gene, which leads to the M55V substitution, has been associated with type I diabetes. The RefSeq contains this polymorphism. [provided by RefSeq, Jul 2008],IDDM5, SMT3H4, SUMO-4, dJ281H8.4,Endocrine & Metabolism,Epigenetics & Nuclear Signaling,IL-6 Receptor Signaling Pathway,Immunology & Inflammation,Mitochondrial metabolism,NF-kB Signaling Pathway,Transcription Factors,Ubiquitin,SUMO4

Molecular Weight: 15kDa

Gene ID: 387082

UniProt: [Q6EEV6](#)

Application Details

Application Notes: WB,1:500 - 1:2000,IHC,1:50 - 1:200,IF,1:50 - 1:200

Restrictions: For Research Use only

Handling

Format: Liquid

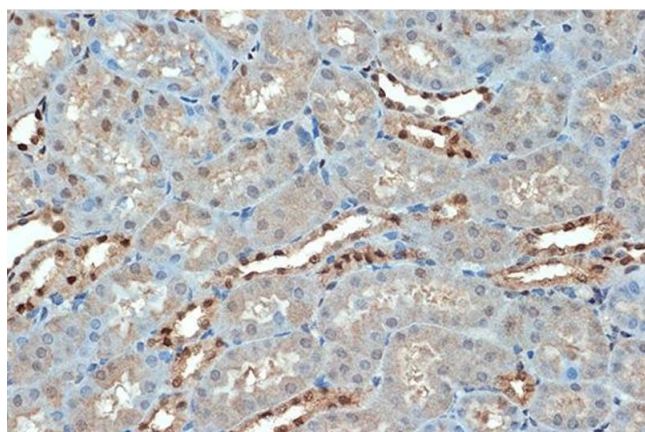
Buffer: PBS with 0.02 % sodium azide,0.05 % BSA,50 % glycerol, pH 7.3.

Preservative: Sodium azide

Precaution of Use: This product contains Sodium azide: a POISONOUS AND HAZARDOUS SUBSTANCE which should be handled by trained staff only.

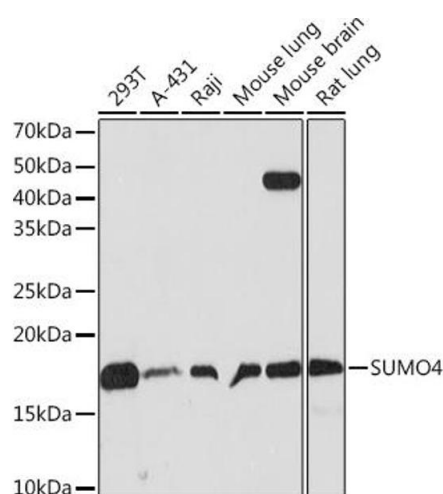
Storage: -20 °C

Storage Comment: Store at -20°C. Avoid freeze / thaw cycles.



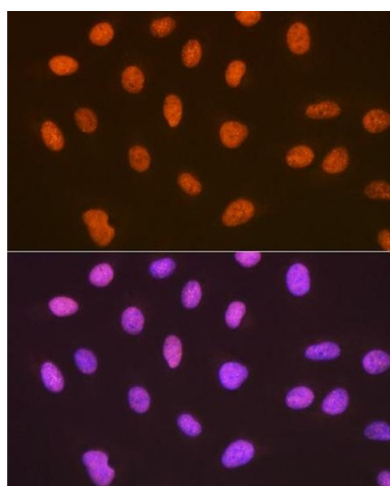
Immunohistochemistry

Image 1. Immunohistochemistry of paraffin-embedded mouse kidney using SUMO4 Rabbit mAb (ABIN7270372) at dilution of 1:100 (40x lens). Perform microwave antigen retrieval with 10 mM Tris/EDTA buffer pH 9.0 before commencing with IHC staining protocol.



Western Blotting

Image 2. Western blot analysis of extracts of various cell lines, using SUMO4 Rabbit mAb (ABIN7270372) at 1:500 dilution. Secondary antibody: HRP Goat Anti-Rabbit IgG (H+L) (ABIN1684268 and ABIN3020597) at 1:10000 dilution. Lysates/proteins: 25 µg per lane. Blocking buffer: 3 % nonfat dry milk in TBST. Detection: ECL Basic Kit (RM00020). Exposure time: 30s.



Immunofluorescence

Image 3. Immunofluorescence analysis of U-2 OS cells using SUMO4 Rabbit mAb (ABIN7270372) at dilution of 1:100 (40x lens). Blue: DAPI for nuclear staining.

Please check the [product details page](#) for more images. Overall 4 images are available for ABIN7270372.