

Datasheet for ABIN7270373
anti-SUMO1 antibody



[Go to Product page](#)

7 Images

Overview

Quantity:	100 µL
Target:	SUMO1
Reactivity:	Human
Host:	Rabbit
Clonality:	Monoclonal
Conjugate:	This SUMO1 antibody is un-conjugated
Application:	Western Blotting (WB), Immunofluorescence (IF), Immunohistochemistry (IHC)

Product Details

Purpose:	SUMO1 Rabbit mAb
Immunogen:	A synthesized peptide derived from human Sumo 1
Isotype:	IgG
Cross-Reactivity:	Human, Mouse, Rat
Characteristics:	Monoclonal Antibodies
Purification:	Affinity purification

Target Details

Target:	SUMO1
Alternative Name:	SUMO1 (SUMO1 Products)
Background:	This gene encodes a protein that is a member of the SUMO (small ubiquitin-like modifier)

Target Details

protein family. It functions in a manner similar to ubiquitin in that it is bound to target proteins as part of a post-translational modification system. However, unlike ubiquitin which targets proteins for degradation, this protein is involved in a variety of cellular processes, such as nuclear transport, transcriptional regulation, apoptosis, and protein stability. It is not active until the last four amino acids of the carboxy-terminus have been cleaved off. Several pseudogenes have been reported for this gene. Alternate transcriptional splice variants encoding different isoforms have been characterized. [provided by RefSeq, Jul 2008],DAP1,GMP1,OFC10,PIC1,SENP2,SMT3,SMT3C,SMT3H3,UBL1,SUMO1,SUMO-1,Autophagy,Cardiovascular,Cell Biology & Developmental Biology,Endocrine & Metabolism,Epigenetics & Nuclear Signaling,Heart,IL-6 Receptor Signaling Pathway,Immunology & Inflammation,Mitochondrial metabolism,NF-kB Signaling Pathway,RNA Binding,Ubiquitin,SUMO1

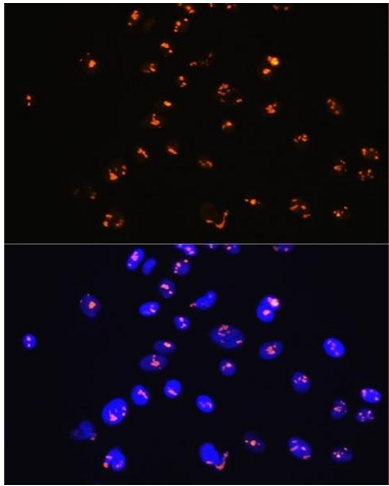
Molecular Weight:	12kDa
Gene ID:	7341
UniProt:	P63165
Pathways:	M Phase , Positive Regulation of Endopeptidase Activity , Protein targeting to Nucleus , Ubiquitin Proteasome Pathway

Application Details

Application Notes:	WB,1:500 - 1:2000,IHC,1:50 - 1:200,IF,1:50 - 1:200
Restrictions:	For Research Use only

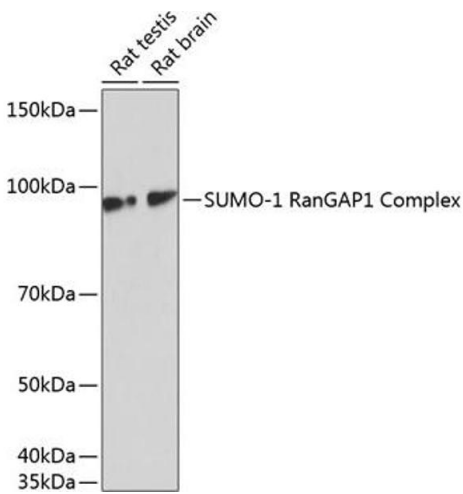
Handling

Format:	Liquid
Buffer:	PBS with 0.02 % sodium azide,0.05 % BSA,50 % glycerol, pH 7.3.
Preservative:	Sodium azide
Precaution of Use:	This product contains Sodium azide: a POISONOUS AND HAZARDOUS SUBSTANCE which should be handled by trained staff only.
Storage:	-20 °C
Storage Comment:	Store at -20°C. Avoid freeze / thaw cycles.



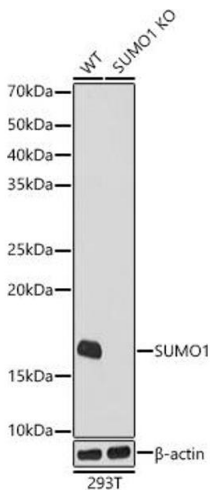
Immunofluorescence

Image 1. Immunofluorescence analysis of C6 cells using SUMO1 Rabbit mAb at dilution of 1:100 (40x lens). Blue: DAPI for nuclear staining.



Western Blotting

Image 2. Western blot analysis of extracts of various cell lines, using SUMO1 antibody at 1:1000 dilution. Secondary antibody: HRP Goat Anti-Rabbit IgG (H+L) (ABIN1684268 and ABIN3020597) at 1:10000 dilution. Lysates/proteins: 25 µg per lane. Blocking buffer: 3 % nonfat dry milk in TBST. Detection: ECL Basic Kit (RM00020). Exposure time: 1 min.



Western Blotting

Image 3. Western blot analysis of extracts from wild type (WT) and SUMO1 knockout (KO) 293T cells, using SUMO1 antibody at 1:1000 dilution. Secondary antibody: HRP Goat Anti-Rabbit IgG (H+L) (ABIN1684268 and ABIN3020597) at 1:10000 dilution. Lysates/proteins: 25 µg per lane. Blocking buffer: 3 % nonfat dry milk in TBST. Detection: ECL Basic Kit (RM00020). Exposure time: 10s.

Please check the [product details page](#) for more images. Overall 7 images are available for ABIN7270373.