



[Go to Product page](#)

Datasheet for ABIN7270395  
**anti-SLC1A3 antibody (AA 453-542)**

1 Image

Overview

Quantity:	100 µL
Target:	SLC1A3
Binding Specificity:	AA 453-542
Reactivity:	Human
Host:	Rabbit
Clonality:	Polyclonal
Conjugate:	This SLC1A3 antibody is un-conjugated
Application:	Western Blotting (WB), Immunohistochemistry (IHC)

Product Details

Purpose:	EAAT1/SLC1A3 Rabbit pAb
Immunogen:	Recombinant fusion protein containing a sequence corresponding to amino acids 453-542 of human EAAT1/EAAT1/SLC1A3 (NP_004163.3).
Sequence:	IVLTSVGLPT DDITLIIAVD WFLDRLRTTT NVLGDLSLGAG IVEHLRHEL KNRDVEMGNS VIEENEMKKP YQLIAQDNET EKPIDSETKM
Isotype:	IgG
Cross-Reactivity:	Human, Mouse, Rat
Characteristics:	Polyclonal Antibodies
Purification:	Affinity purification

## Target Details

---

Target:	SLC1A3
Alternative Name:	SLC1A3 ( <a href="#">SLC1A3 Products</a> )
Background:	This gene encodes a member of a member of a high affinity glutamate transporter family. This gene functions in the termination of excitatory neurotransmission in central nervous system. Mutations are associated with episodic ataxia, Type 6. Alternative splicing results in multiple transcript variants.,SLC1A3,EA6,EAAT1,GLAST,GLAST1,Signal Transduction,Endocrine & Metabolism,Neuroscience,Cell Type Marker,Stem Cells,Neural Stem Cells,Astrocyte marker,SLC1A3
Molecular Weight:	55kDa/59kDa
Gene ID:	6507
UniProt:	<a href="#">P43003</a>
Pathways:	<a href="#">Sensory Perception of Sound</a> , <a href="#">Synaptic Membrane</a> , <a href="#">Dicarboxylic Acid Transport</a>

## Application Details

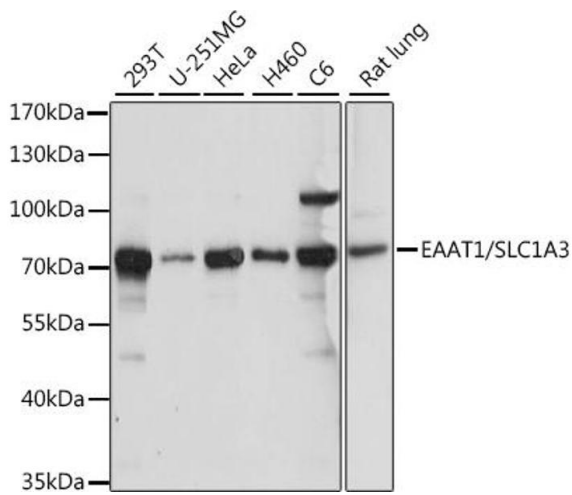
---

Application Notes:	WB,1:500 - 1:2000,IHC,1:100 - 1:200
Restrictions:	For Research Use only

## Handling

---

Format:	Liquid
Buffer:	PBS with 0.02 % sodium azide,50 % glycerol, pH 7.3.
Preservative:	Sodium azide
Precaution of Use:	This product contains Sodium azide: a POISONOUS AND HAZARDOUS SUBSTANCE which should be handled by trained staff only.
Storage:	-20 °C
Storage Comment:	Store at -20°C. Avoid freeze / thaw cycles.



### Western Blotting

**Image 1.** Western blot analysis of extracts of various cell lines, using E/E/SLC1 antibody (ABIN7270395) at 1:1000 dilution. Secondary antibody: HRP Goat Anti-Rabbit IgG (H+L) (ABIN1684268 and ABIN3020597) at 1:10000 dilution. Lysates/proteins: 25 µg per lane. Blocking buffer: 3 % nonfat dry milk in TBST. Detection: ECL Basic Kit (RM00020). Exposure time: 10s.