

Datasheet for ABIN7270401
anti-SLC13A3 antibody (AA 160-240)[Go to Product page](#)

1 Image

Overview

Quantity:	100 µL
Target:	SLC13A3
Binding Specificity:	AA 160-240
Reactivity:	Human
Host:	Rabbit
Clonality:	Polyclonal
Conjugate:	This SLC13A3 antibody is un-conjugated
Application:	Western Blotting (WB)

Product Details

Purpose:	SLC13A3 Rabbit pAb
Immunogen:	Recombinant fusion protein containing a sequence corresponding to amino acids 160-240 of human SLC13A3 (NP_073740.2).
Sequence:	KSLFGQKEVR KDPSQSEEN TAAVRRNGLH TVPTMQFLA STEAKDHPGE TEVPLDLPAD SRKEDEYRRN IWKGFLISIP Y
Isotype:	IgG
Cross-Reactivity:	Human
Characteristics:	Polyclonal Antibodies
Purification:	Affinity purification

Target Details

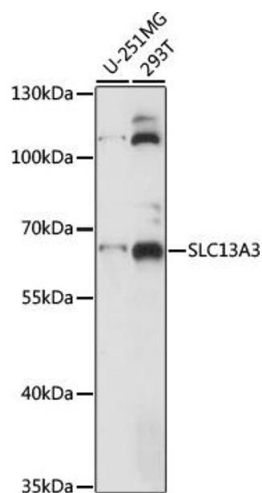
Target:	SLC13A3
Alternative Name:	SLC13A3 (SLC13A3 Products)
Background:	<p>Mammalian sodium-dicarboxylate cotransporters transport succinate and other Krebs cycle intermediates. They fall into 2 categories based on their substrate affinity: low affinity and high affinity. Both the low- and high-affinity transporters play an important role in the handling of citrate by the kidneys. The protein encoded by this gene represents the high-affinity form. Alternatively spliced transcript variants encoding different isoforms have been found for this gene, although the full-length nature of some of them have not been characterized yet.,SLC13A3,NADC3,SDCT2,SLC13A3</p>
Molecular Weight:	25kDa/37kDa/57kDa/61kDa/66kDa
Gene ID:	64849
UniProt:	Q8WWT9
Pathways:	Dicarboxylic Acid Transport

Application Details

Application Notes:	WB,1:500 - 1:2000
Restrictions:	For Research Use only

Handling

Format:	Liquid
Buffer:	PBS with 0.02 % sodium azide,50 % glycerol, pH 7.3.
Preservative:	Sodium azide
Precaution of Use:	This product contains Sodium azide: a POISONOUS AND HAZARDOUS SUBSTANCE which should be handled by trained staff only.
Storage:	-20 °C
Storage Comment:	Store at -20°C. Avoid freeze / thaw cycles.



Western Blotting

Image 1. Western blot analysis of extracts of various cell lines, using SLC13 antibody (ABIN7270401) at 1:1000 dilution. Secondary antibody: HRP Goat Anti-Rabbit IgG (H+L) (ABIN1684268 and ABIN3020597) at 1:10000 dilution. Lysates/proteins: 25 µg per lane. Blocking buffer: 3 % nonfat dry milk in TBST. Detection: ECL Basic Kit (RM00020). Exposure time: 5s.