



[Go to Product page](#)

Datasheet for ABIN7270402  
**anti-SLC14A1 antibody (C-Term)**

5 Images

Overview

Quantity:	100 µL
Target:	SLC14A1
Binding Specificity:	C-Term
Reactivity:	Human
Host:	Rabbit
Clonality:	Polyclonal
Conjugate:	This SLC14A1 antibody is un-conjugated
Application:	Western Blotting (WB), Immunohistochemistry (IHC), Immunofluorescence (IF)

Product Details

Purpose:	SLC14A1 Rabbit pAb
Immunogen:	A synthetic peptide corresponding to a sequence within amino acids 100 to the C-terminus of human SLC14A1 (NP_001295208.1).
Sequence:	QIYGCDNPWT GGIFLGAILL SSPLMCLHAA IGSLLGIAAG LSLSAPFEDI YFGLWGFNSS LACIAMGGMF MALTWQTHLL ALGCALFTAY LGVGMANFMA EVGLPACTWP FCLATLLFLI MTTKNSNIYK MPLSKVTYPE ENRIFYLQAK KRMVESPL
Isotype:	IgG
Cross-Reactivity:	Human, Mouse, Rat
Characteristics:	Polyclonal Antibodies
Purification:	Affinity purification

## Target Details

---

Target:	SLC14A1
Alternative Name:	SLC14A1 ( <a href="#">SLC14A1 Products</a> )
Background:	The protein encoded by this gene is a membrane transporter that mediates urea transport in erythrocytes. This gene forms the basis for the Kidd blood group system.,SLC14A1,HUT11,HsT1341,JK,RACH1,RACH2,UT-B1,UT1,UTE,SLC14A1
Molecular Weight:	42kDa/48kDa
Gene ID:	6563
UniProt:	<a href="#">Q13336</a>

## Application Details

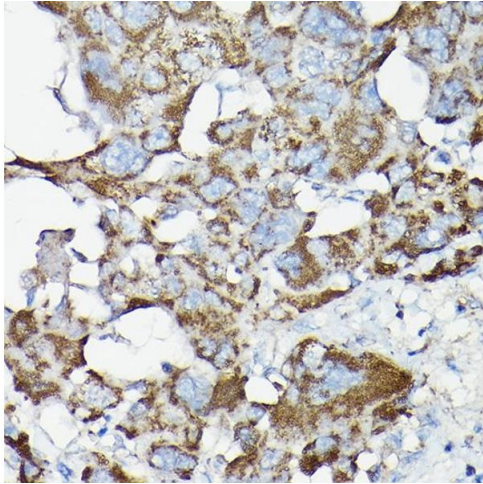
---

Application Notes:	WB,1:500 - 1:2000,IHC,1:100 - 1:200,IF,1:50 - 1:200
Restrictions:	For Research Use only

## Handling

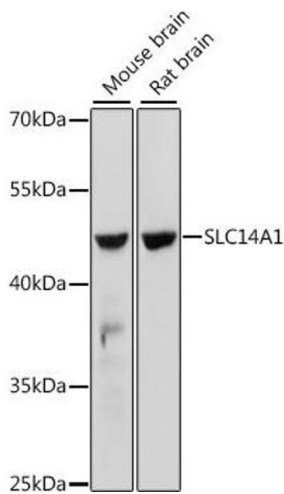
---

Format:	Liquid
Buffer:	PBS with 0.02 % sodium azide,50 % glycerol, pH 7.3.
Preservative:	Sodium azide
Precaution of Use:	This product contains Sodium azide: a POISONOUS AND HAZARDOUS SUBSTANCE which should be handled by trained staff only.
Storage:	-20 °C
Storage Comment:	Store at -20°C. Avoid freeze / thaw cycles.



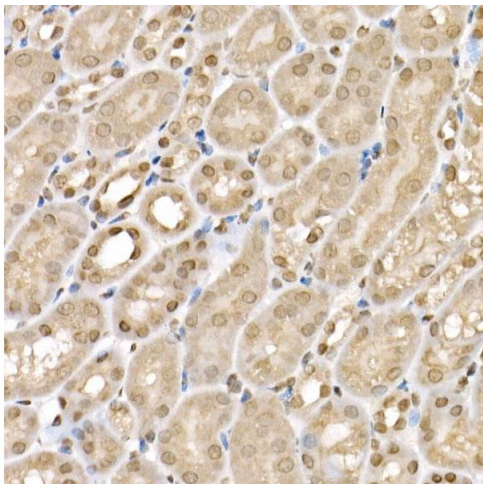
### Immunohistochemistry

**Image 1.** Immunohistochemistry of paraffin-embedded rat liver using SLC14 Rabbit pAb (5991) at dilution of 1:200 (40x lens). Perform high pressure antigen retrieval with 10 mM citrate buffer pH 6.0 before commencing with IHC staining protocol.



### Western Blotting

**Image 2.** Western blot analysis of extracts of various cell lines, using SLC14 antibody (5991) at 1:1000 dilution. Secondary antibody: HRP Goat Anti-Rabbit IgG (H+L) (ABIN1684268 and ABIN3020597) at 1:10000 dilution. Lysates/proteins: 25 µg per lane. Blocking buffer: 3 % nonfat dry milk in TBST. Detection: ECL Basic Kit (RM00020). Exposure time: 60s.



### Immunohistochemistry

**Image 3.** Immunohistochemistry of paraffin-embedded mouse kidney using SLC14 Rabbit pAb (5991) at dilution of 1:200 (40x lens). Perform high pressure antigen retrieval with 10 mM citrate buffer pH 6.0 before commencing with IHC staining protocol.

Please check the [product details page](#) for more images. Overall 5 images are available for ABIN7270402.