

Datasheet for ABIN7270407

anti-Solute Carrier Family 17 (Vesicular Glutamate Transporter), Member 6 (SLC17A6) (C-Term) antibody[Go to Product page](#)**3** Images

Overview

Quantity:	100 µL
Target:	Solute Carrier Family 17 (Vesicular Glutamate Transporter), Member 6 (SLC17A6)
Binding Specificity:	C-Term
Reactivity:	Human
Host:	Rabbit
Clonality:	Polyclonal
Conjugate:	Un-conjugated
Application:	Western Blotting (WB), Immunofluorescence (IF)

Product Details

Purpose:	SLC17A6 Rabbit pAb
Immunogen:	A synthetic peptide corresponding to a sequence within amino acids 500 to the C-terminus of human SLC17A6 (NP_065079.1).
Sequence:	GEKQPWADPE ETSECKCGFI HEDELDEETG DITQNYINYG TTKSYGATTQ ANGGWPSGWE KKEEFVQGEV QDSHSYKDRV DYS
Isotype:	IgG
Cross-Reactivity:	Human, Mouse, Rat
Characteristics:	Polyclonal Antibodies
Purification:	Affinity purification

Target Details

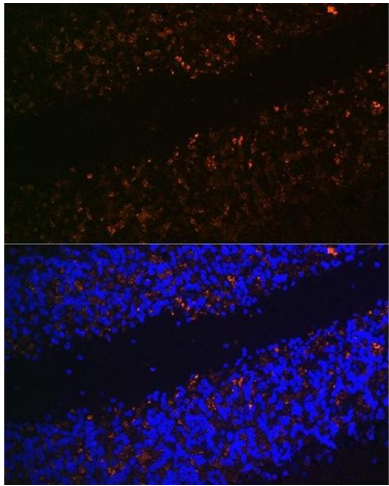
Target:	Solute Carrier Family 17 (Vesicular Glutamate Transporter), Member 6 (SLC17A6)
Alternative Name:	SLC17A6 (SLC17A6 Products)
Background:	SLC17A6 (solute carrier family 17 (vesicular glutamate transporter), member 6) is a protein-coding gene. Diseases associated with SLC17A6 include gnathodiaphyseal dysplasia, and schizophrenia. GO annotations related to this gene include L-glutamate transmembrane transporter activity and symporter activity. An important paralog of this gene is SLC17A7.,SLC17A6,DNPI,VGLUT2,Neuroscience,SLC17A6
Molecular Weight:	64kDa
Gene ID:	57084
UniProt:	Q9P2U8

Application Details

Application Notes:	WB,1:500 - 1:2000,IF,1:50 - 1:200
Restrictions:	For Research Use only

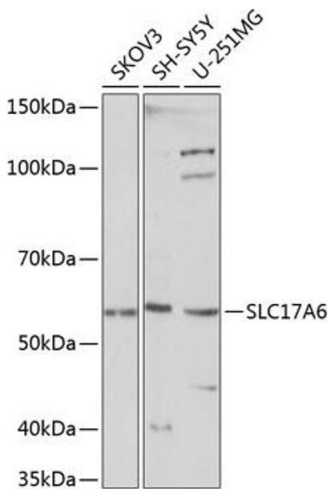
Handling

Format:	Liquid
Buffer:	PBS with 0.02 % sodium azide,50 % glycerol, pH 7.3.
Preservative:	Sodium azide
Precaution of Use:	This product contains Sodium azide: a POISONOUS AND HAZARDOUS SUBSTANCE which should be handled by trained staff only.
Storage:	-20 °C
Storage Comment:	Store at -20°C. Avoid freeze / thaw cycles.



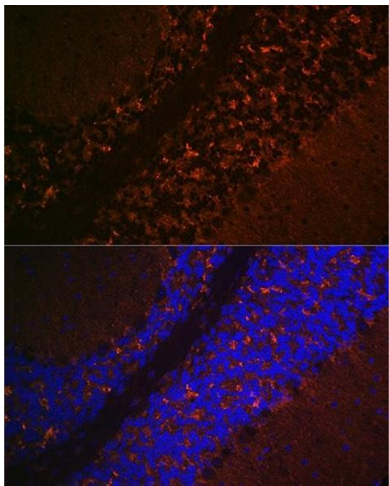
Immunofluorescence

Image 1. Immunofluorescence analysis of rat brain using SLC17 Rabbit pAb (ABIN7270407) at dilution of 1:100 (40x lens). Blue: DAPI for nuclear staining.



Western Blotting

Image 2. Western blot analysis of extracts of various cell lines, using SLC17 Polyclonal Antibody (ABIN7270407) at 1:1000 dilution. Secondary antibody: HRP Goat Anti-Rabbit IgG (H+L) (ABIN1684268 and ABIN3020597) at 1:10000 dilution. Lysates/proteins: 25 µg per lane. Blocking buffer: 3 % nonfat dry milk in TBST. Detection: ECL Basic Kit (RM00020). Exposure time: 10s.



Immunofluorescence

Image 3. Immunofluorescence analysis of mouse brain using SLC17 Rabbit pAb (ABIN7270407) at dilution of 1:100 (40x lens). Blue: DAPI for nuclear staining.