

Datasheet for ABIN7270415

anti-SLC2A3 antibody[Go to Product page](#)**2** Images

Overview

Quantity:	100 µL
Target:	SLC2A3
Reactivity:	Human
Host:	Rabbit
Clonality:	Monoclonal
Application:	Western Blotting (WB), Immunoprecipitation (IP)

Product Details

Purpose:	GLUT3/SLC2A3 Rabbit mAb
Immunogen:	A synthesized peptide derived from human GLUT3/SLC2A3
Isotype:	IgG
Cross-Reactivity:	Human, Mouse, Rat
Characteristics:	Monoclonal Antibodies
Purification:	Affinity purification

Target Details

Target:	SLC2A3
Alternative Name:	SLC2A3 (SLC2A3 Products)
Background:	Facilitative glucose transporter that can also mediate the uptake of various other monosaccharides across the cell membrane. Mediates the uptake of glucose, 2-deoxyglucose,

Target Details

galactose, mannose, xylose and fucose, and probably also dehydroascorbate. Does not mediate fructose transport.,GLUT3,Cancer,Carbohydrate metabolism,Cell Biology & Developmental Biology,Endocrine & Metabolism,Neurodegenerative Diseases,Neurodegenerative Diseases_Amyloid Plaque and Neurofibrillary Tangle Formation in Alzheimers Disease,Neuroscience,Signal Transduction,SLC2A3

Molecular Weight: 54kDa

Gene ID: 6515

UniProt: [P11169](#)

Pathways: [Warburg Effect](#)

Application Details

Application Notes: WB,1:500 - 1:2000,IP,1:50 - 1:200

Restrictions: For Research Use only

Handling

Format: Liquid

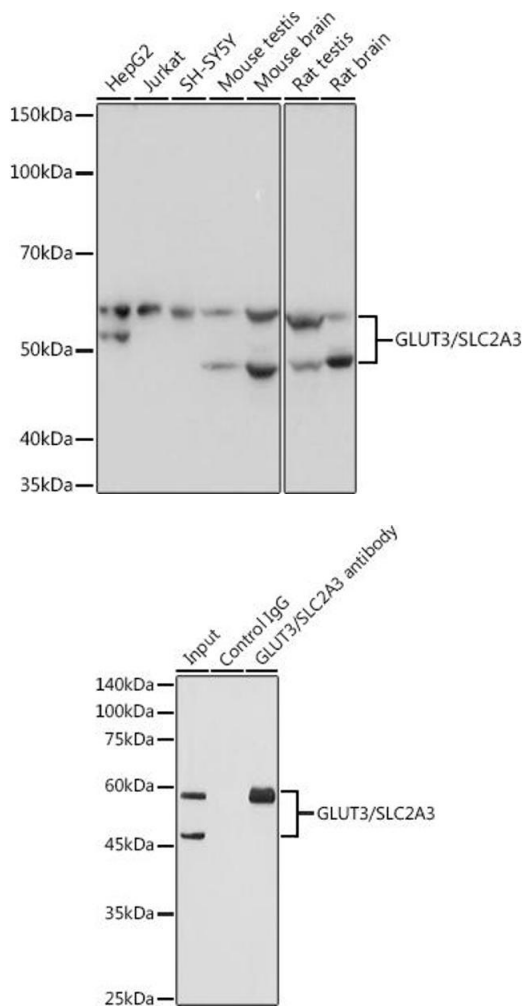
Buffer: PBS with 0.02 % sodium azide,0.05 % BSA,50 % glycerol, pH 7.3.

Preservative: Sodium azide

Precaution of Use: This product contains Sodium azide: a POISONOUS AND HAZARDOUS SUBSTANCE which should be handled by trained staff only.

Storage: -20 °C

Storage Comment: Store at -20°C. Avoid freeze / thaw cycles.



Western Blotting

Image 1. Western blot analysis of extracts of various cell lines, using GLUT3/SLC2 Rabbit mAb (ABIN7270415) at 1:1000 dilution. Secondary antibody: HRP Goat Anti-Rabbit IgG (H+L) (ABIN1684268 and ABIN3020597) at 1:10000 dilution. Lysates/proteins: 25 µg per lane. Blocking buffer: 3 % nonfat dry milk in TBST. Detection: ECL Basic Kit (RM00020). Exposure time: 1 s.

Immunoprecipitation

Image 2. Immunoprecipitation analysis of 600 µg extracts of Mouse brain using 3 µg GLUT3/SLC2 antibody (ABIN7270415). Western blot was performed from the immunoprecipitate using GLUT3/SLC2 antibody (ABIN7270415) at a dilution of 1:1000.