



[Go to Product page](#)

Datasheet for ABIN7270419

anti-SLC22A8 antibody (C-Term)

1 Image

Overview

| | |
|----------------------|--|
| Quantity: | 100 µL |
| Target: | SLC22A8 |
| Binding Specificity: | C-Term |
| Reactivity: | Human |
| Host: | Rabbit |
| Clonality: | Polyclonal |
| Conjugate: | This SLC22A8 antibody is un-conjugated |
| Application: | Western Blotting (WB) |

Product Details

| | |
|-------------------|--|
| Purpose: | SLC22A8 Rabbit pAb |
| Immunogen: | A synthetic peptide corresponding to a sequence within amino acids 400 to the C-terminus of human SLC22A8 (NP_004245.2). |
| Sequence: | LTFVPLDLQT VRTVLAVFGK GCLSSSFSCFLYTSELYPT VIRQTGMGVS NLWTRVGS MV SPLVKITGEV QPFIPNIIYG ITALLGGSAA LFLPETLNQP LPETIEDLEN WSLRAKKPKQ EPEVEKASQR IPLQPHGPGL GSS |
| Isotype: | IgG |
| Cross-Reactivity: | Human, Mouse, Rat |
| Characteristics: | Polyclonal Antibodies |
| Purification: | Affinity purification |

Target Details

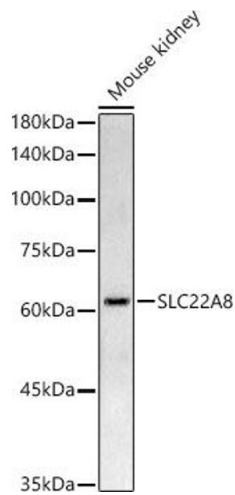
| | |
|-------------------|---|
| Target: | SLC22A8 |
| Alternative Name: | SLC22A8 (SLC22A8 Products) |
| Background: | This gene encodes a protein involved in the sodium-independent transport and excretion of organic anions, some of which are potentially toxic. The encoded protein is an integral membrane protein and appears to be localized to the basolateral membrane of the kidney. Multiple alternatively spliced transcript variants that encode different protein isoforms have been described for this gene.,SLC22A8,OAT3,SLC22A8 |
| Molecular Weight: | 11kDa/46kDa/49kDa/59kDa/60kDa |
| Gene ID: | 9376 |
| UniProt: | Q8TCC7 |

Application Details

| | |
|--------------------|-----------------------|
| Application Notes: | WB,1:500 - 1:2000 |
| Restrictions: | For Research Use only |

Handling

| | |
|--------------------|--|
| Format: | Liquid |
| Buffer: | PBS with 0.02 % sodium azide,50 % glycerol, pH 7.3. |
| Preservative: | Sodium azide |
| Precaution of Use: | This product contains Sodium azide: a POISONOUS AND HAZARDOUS SUBSTANCE which should be handled by trained staff only. |
| Storage: | -20 °C |
| Storage Comment: | Store at -20°C. Avoid freeze / thaw cycles. |



Western Blotting

Image 1. Western blot analysis of extracts of Mouse kidney, using SLC22 Rabbit pAb antibody (ABIN7270419) at 1:500 dilution. Secondary antibody: HRP Goat Anti-Rabbit IgG (H+L) (ABIN1684268 and ABIN3020597) at 1:10000 dilution. Lysates/proteins: 25 µg per lane. Blocking buffer: 3 % nonfat dry milk in TBST. Detection: ECL Basic Kit (RM00020). Exposure time: 180s.