

Datasheet for ABIN7270421  
**anti-SLC22A7 antibody (AA 50-142)**[Go to Product page](#)

## 1 Image

## Overview

Quantity:	100 µL
Target:	SLC22A7
Binding Specificity:	AA 50-142
Reactivity:	Human
Host:	Rabbit
Clonality:	Polyclonal
Conjugate:	This SLC22A7 antibody is un-conjugated
Application:	Western Blotting (WB)

## Product Details

Purpose:	SLC22A7 Rabbit pAb
Immunogen:	Recombinant fusion protein containing a sequence corresponding to amino acids 50-142 of human SLC22A7 (NP_696961.2).
Sequence:	ALPGAPANFS HQDVWLEAHL PREPDGTLSS CLRFAYPQAL PNTTLGEERQ SRGELEDEPA TVPCSQGWEY DHSEFSSTIA TESQWDLVCE QKG
Isotype:	IgG
Cross-Reactivity:	Human, Mouse, Rat
Characteristics:	Polyclonal Antibodies
Purification:	Affinity purification

## Target Details

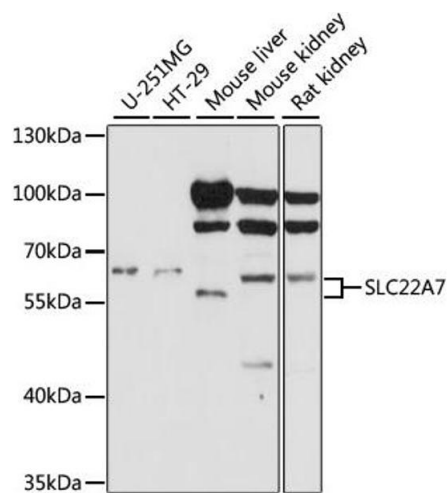
Target:	SLC22A7
Alternative Name:	SLC22A7 ( <a href="#">SLC22A7 Products</a> )
Background:	The protein encoded by this gene is involved in the sodium-independent transport and excretion of organic anions, some of which are potentially toxic. The encoded protein is an integral membrane protein and appears to be localized to the basolateral membrane of the kidney. Alternatively spliced transcript variants encoding different isoforms have been described.,SLC22A7,NLT,OAT2,hOAT11,SLC22A7
Molecular Weight:	26kDa/59kDa/60kDa
Gene ID:	10864
UniProt:	<a href="#">Q9Y694</a>

## Application Details

Application Notes:	WB,1:500 - 1:2000
Restrictions:	For Research Use only

## Handling

Format:	Liquid
Buffer:	PBS with 0.02 % sodium azide,50 % glycerol, pH 7.3.
Preservative:	Sodium azide
Precaution of Use:	This product contains Sodium azide: a POISONOUS AND HAZARDOUS SUBSTANCE which should be handled by trained staff only.
Storage:	-20 °C
Storage Comment:	Store at -20°C. Avoid freeze / thaw cycles.



### Western Blotting

**Image 1.** Western blot analysis of extracts of various cell lines, using SLC22 antibody (ABIN7270421) at 1:1000 dilution. Secondary antibody: HRP Goat Anti-Rabbit IgG (H+L) (ABIN1684268 and ABIN3020597) at 1:10000 dilution. Lysates/proteins: 25 µg per lane. Blocking buffer: 3 % nonfat dry milk in TBST. Detection: ECL Basic Kit (RM00020). Exposure time: 60s.