

Datasheet for ABIN7270427
anti-SLC25A31 antibody (AA 100-200)[Go to Product page](#)

1 Image

Overview

Quantity:	100 µL
Target:	SLC25A31
Binding Specificity:	AA 100-200
Reactivity:	Human
Host:	Rabbit
Clonality:	Polyclonal
Conjugate:	This SLC25A31 antibody is un-conjugated
Application:	Western Blotting (WB)

Product Details

Purpose:	SLC25A31 Rabbit pAb
Immunogen:	A synthetic peptide corresponding to a sequence within amino acids 100-200 of human SLC25A31 (NP_112581.1).
Sequence:	NFAFKDKYKQ LFMSGVNKEK QFWRWFLANL ASGGAAGATS LCVVYPLDFA RTRLGVDIGK GPEERQFKGL GDCIMKIAKS DGIAGLYQGF GVSQGIIVY R
Isotype:	IgG
Cross-Reactivity:	Mouse, Rat
Characteristics:	Polyclonal Antibodies
Purification:	Affinity purification

Target Details

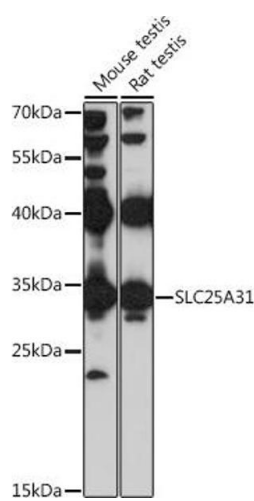
Target:	SLC25A31
Alternative Name:	SLC25A31 (SLC25A31 Products)
Background:	<p>The protein encoded by this gene is a member of the ADP/ATP carrier family of proteins that exchange cytosolic ADP for matrix ATP in the mitochondria. Cells over-expressing this gene have been shown to display an anti-apoptotic phenotype. This protein is also thought to play a role in spermatogenesis, where it is believed to associate with a part of the flagellar cytoskeleton and with glycolytic enzymes. Male mice with mutations in the mouse ortholog of this gene are sterile and spermatocytes display an early meiotic arrest phenotype. Alternative splicing results in multiple transcript variants encoding different isoforms.,SLC25A31,AAC4,ANT 4,ANT4,SFEC35 kDa,Endocrine & Metabolism,Mitochondrial metabolism,Warburg Effect,Neuroscience,Neurodegenerative Diseases,SLC25A31</p>
Molecular Weight:	35kDa
Gene ID:	83447
UniProt:	Q9H0C2

Application Details

Application Notes:	WB,1:500 - 1:2000
Restrictions:	For Research Use only

Handling

Format:	Liquid
Buffer:	PBS with 0.02 % sodium azide,50 % glycerol, pH 7.3.
Preservative:	Sodium azide
Precaution of Use:	This product contains Sodium azide: a POISONOUS AND HAZARDOUS SUBSTANCE which should be handled by trained staff only.
Storage:	-20 °C
Storage Comment:	Store at -20°C. Avoid freeze / thaw cycles.



Western Blotting

Image 1. Western blot analysis of extracts of various cell lines, using SLC25 antibody (ABIN7270427) at 1:1000 dilution. Secondary antibody: HRP Goat Anti-Rabbit IgG (H+L) (ABIN1684268 and ABIN3020597) at 1:10000 dilution. Lysates/proteins: 25 µg per lane. Blocking buffer: 3 % nonfat dry milk in TBST. Detection: ECL Basic Kit (RM00020). Exposure time: 30s.