



[Go to Product page](#)

Datasheet for ABIN7270435
anti-SLC25A23 antibody (AA 1-160)

2 Images

Overview

Quantity:	100 µL
Target:	SLC25A23
Binding Specificity:	AA 1-160
Reactivity:	Human
Host:	Rabbit
Clonality:	Polyclonal
Conjugate:	This SLC25A23 antibody is un-conjugated
Application:	Western Blotting (WB), Immunofluorescence (IF)

Product Details

Purpose:	SLC25A23 Rabbit pAb
Immunogen:	Recombinant fusion protein containing a sequence corresponding to amino acids 1-160 of human SLC25A23 (NP_077008.2).
Sequence:	MRGSPGDAER RQRWGRLFEE LDSNKDGRVD VHELRLQGLAR LGGGNPDPGA QQGISSEGDA DPDGGLDLEE FSRYLQEREQ RLLLMFHSLD RNQDGHIDVS EIQQSFRALG ISISLEQAEK ILHSMDRDGT MTIDWQEWDR HFLLHSENV EDVLYFWKHS
Isotype:	IgG
Cross-Reactivity:	Human, Mouse, Rat
Characteristics:	Polyclonal Antibodies
Purification:	Affinity purification

Target Details

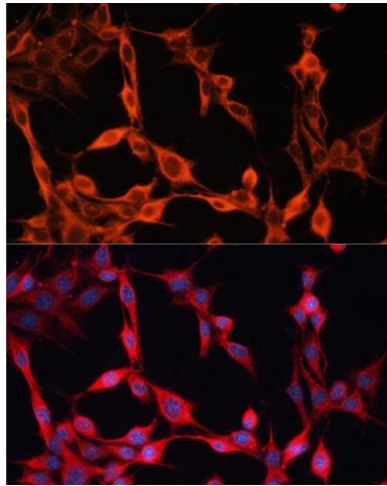
Target:	SLC25A23
Alternative Name:	SLC25A23 (SLC25A23 Products)
Background:	SLC25A23 (solute carrier family 25 (mitochondrial carrier, phosphate carrier), member 23) is a protein-coding gene. GO annotations related to this gene include calcium ion binding. An important paralog of this gene is SLC25A24.,SLC25A23,APC2,MCSC2,SCaMC-3,SLC25A23
Molecular Weight:	48kDa/49kDa/52kDa/54kDa
Gene ID:	79085
UniProt:	Q9BV35

Application Details

Application Notes:	WB,1:500 - 1:2000,IF,1:50 - 1:200
Restrictions:	For Research Use only

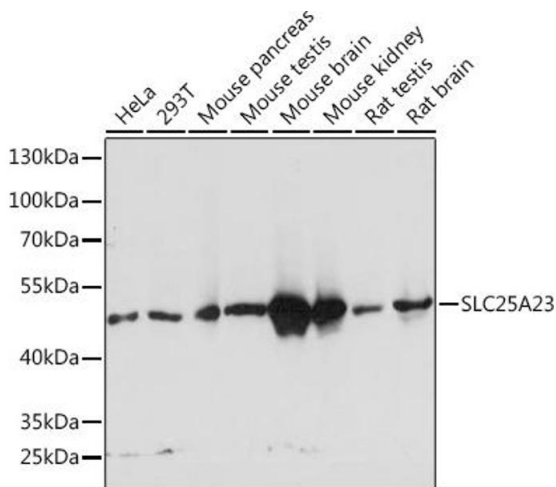
Handling

Format:	Liquid
Buffer:	PBS with 0.02 % sodium azide,50 % glycerol, pH 7.3.
Preservative:	Sodium azide
Precaution of Use:	This product contains Sodium azide: a POISONOUS AND HAZARDOUS SUBSTANCE which should be handled by trained staff only.
Storage:	-20 °C
Storage Comment:	Store at -20°C. Avoid freeze / thaw cycles.



Immunofluorescence

Image 1. Immunofluorescence analysis of NIH/3T3 cells using SLC25 antibody at dilution of 1:100. Blue: DAPI for nuclear staining.



Western Blotting

Image 2. Western blot analysis of extracts of various cell lines, using SLC25 Rabbit pAb at 1:1000 dilution. Secondary antibody: HRP Goat Anti-Rabbit IgG (H+L) (ABIN1684268 and ABIN3020597) at 1:10000 dilution. Lysates/proteins: 25 µg per lane. Blocking buffer: 3% nonfat dry milk in TBST. Detection: ECL Basic Kit (RM00020). Exposure time: 3s.