

Datasheet for ABIN7270443

anti-Slc26a9 antibody[Go to Product page](#)**1** Image

Overview

Quantity:	100 µL
Target:	Slc26a9
Reactivity:	Human
Host:	Rabbit
Clonality:	Polyclonal
Conjugate:	This Slc26a9 antibody is un-conjugated
Application:	Western Blotting (WB)

Product Details

Purpose:	SLC26A9 Rabbit pAb
Immunogen:	Recombinant protein of human SLC26A9.
Isotype:	IgG
Cross-Reactivity:	Human, Mouse
Characteristics:	Polyclonal Antibodies
Purification:	Affinity purification

Target Details

Target:	Slc26a9
Alternative Name:	SLC26A9 (Slc26a9 Products)
Background:	This gene is one member of a family of sulfate/anion transporter genes. Family members are

Target Details

well conserved in their genomic (number and size of exons) and protein (aa length among species) structures yet have markedly different tissue expression patterns. The product of this gene is a highly selective chloride ion channel regulated by WNK kinases. Alternative splicing results in multiple transcript variants encoding differing isoforms.[provided by RefSeq, Dec 2008],SLC26A9,Cancer,Endocrine & Metabolism,SLC26A9

Gene ID: 115019

UniProt: [Q7LBE3](#)

Application Details

Application Notes: WB,1:500 - 1:2000

Restrictions: For Research Use only

Handling

Format: Liquid

Buffer: PBS with 0.02 % sodium azide,50 % glycerol, pH 7.3.

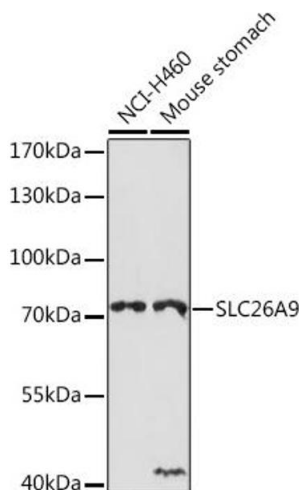
Preservative: Sodium azide

Precaution of Use: This product contains Sodium azide: a POISONOUS AND HAZARDOUS SUBSTANCE which should be handled by trained staff only.

Storage: -20 °C

Storage Comment: Store at -20°C. Avoid freeze / thaw cycles.

Images



Western Blotting

Image 1. Western blot analysis of extracts of various cell lines, using SLC26 Rabbit pAb (ABIN7270443) at 1:1000 dilution. Secondary antibody: HRP Goat Anti-Rabbit IgG (H+L) (ABIN1684268 and ABIN3020597) at 1:10000 dilution. Lysates/proteins: 25 µg per lane. Blocking buffer: 3 % nonfat dry milk in TBST. Detection: ECL Basic Kit (RM00020). Exposure time: 90s.