

Datasheet for ABIN7270448
anti-SLC29A2 antibody



[Go to Product page](#)

5 Images

Overview

| | |
|--------------|---|
| Quantity: | 100 µL |
| Target: | SLC29A2 |
| Reactivity: | Human |
| Host: | Rabbit |
| Clonality: | Monoclonal |
| Conjugate: | This SLC29A2 antibody is un-conjugated |
| Application: | Immunohistochemistry (IHC), Immunofluorescence (IF) |

Product Details

| | |
|-------------------|---|
| Purpose: | ENT2/SLC29A2 Rabbit mAb |
| Immunogen: | A synthesized peptide derived from human ENT2/SLC29A2 |
| Isotype: | IgG |
| Cross-Reactivity: | Human, Mouse, Rat |
| Characteristics: | Monoclonal Antibodies |
| Purification: | Affinity purification |

Target Details

| | |
|-------------------|---|
| Target: | SLC29A2 |
| Alternative Name: | SLC29A2 (SLC29A2 Products) |
| Background: | The uptake of nucleosides by transporters, such as SLC29A2, is essential for nucleotide |

Target Details

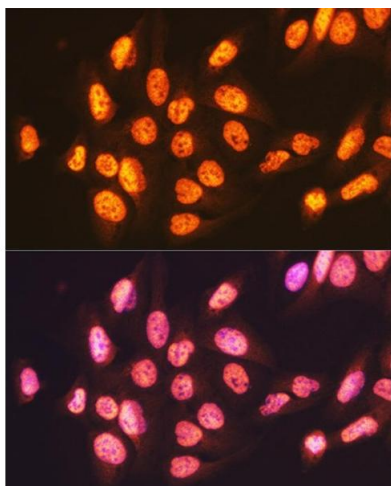
| | |
|-------------------|--|
| | synthesis by salvage pathways in cells that lack de novo biosynthetic pathways. Nucleoside transport also plays a key role in the regulation of many physiologic processes through its effect on adenosine concentration at the cell surface (Griffiths et al., 1997 [PubMed 9396714]).[supplied by OMIM, Nov 2008],DER12, ENT2, HNP36,Signal Transduction,SLC29A2 |
| Molecular Weight: | 55-65kDa |
| Gene ID: | 3177 |
| UniProt: | Q14542 |

Application Details

| | |
|--------------------|----------------------------------|
| Application Notes: | IHC,1:50 - 1:200,IF,1:50 - 1:200 |
| Restrictions: | For Research Use only |

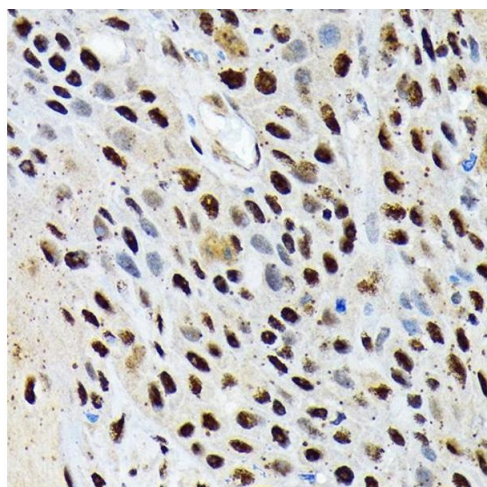
Handling

| | |
|--------------------|--|
| Format: | Liquid |
| Buffer: | PBS with 0.02 % sodium azide,0.05 % BSA,50 % glycerol, pH 7.3. |
| Preservative: | Sodium azide |
| Precaution of Use: | This product contains Sodium azide: a POISONOUS AND HAZARDOUS SUBSTANCE which should be handled by trained staff only. |
| Storage: | -20 °C |
| Storage Comment: | Store at -20°C. Avoid freeze / thaw cycles. |



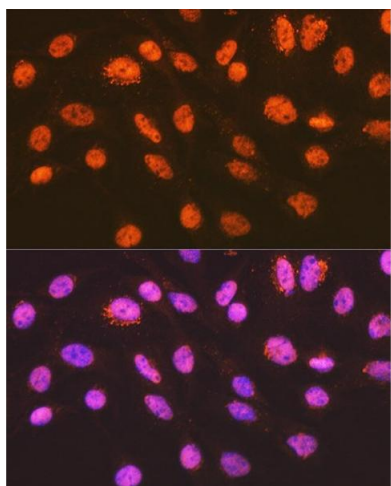
Immunofluorescence

Image 1. Immunofluorescence analysis of U-2 OS cells using ENT2/SLC29 Rabbit mAb (ABIN7270448) at dilution of 1:100 (40x lens). Blue: DAPI for nuclear staining.



Immunohistochemistry

Image 2. Immunohistochemistry of paraffin-embedded human esophageal cancer using ENT2/SLC29 Rabbit mAb (ABIN7270448) at dilution of 1:100 (40x lens). Perform microwave antigen retrieval with 10 mM Tris/EDTA buffer pH 9.0 before commencing with IHC staining protocol.



Immunofluorescence

Image 3. Immunofluorescence analysis of C6 cells using ENT2/SLC29 Rabbit mAb (ABIN7270448) at dilution of 1:100 (40x lens). Blue: DAPI for nuclear staining.

Please check the [product details page](#) for more images. Overall 5 images are available for ABIN7270448.