

Datasheet for ABIN7270451  
**anti-SLC34A3 antibody (AA 210-320)**[Go to Product page](#)

## 1 Image

## Overview

Quantity:	100 µL
Target:	SLC34A3
Binding Specificity:	AA 210-320
Reactivity:	Human
Host:	Rabbit
Clonality:	Polyclonal
Conjugate:	This SLC34A3 antibody is un-conjugated
Application:	Western Blotting (WB)

## Product Details

Purpose:	SLC34A3 Rabbit pAb
Immunogen:	Recombinant fusion protein containing a sequence corresponding to amino acids 210-320 of human SLC34A3 (NP_543153.1).
Sequence:	ESATALLERL SELALGAASL TPRAQAPDIL KVLTKPLTHL IVQLDSDMIM SSATGNATNS SLIKHWCGTT GQPTQENSSC GAFGPCTEKN STAPADRLPC RHLFAGTELT D
Isotype:	IgG
Cross-Reactivity:	Human, Mouse, Rat
Characteristics:	Polyclonal Antibodies
Purification:	Affinity purification

## Target Details

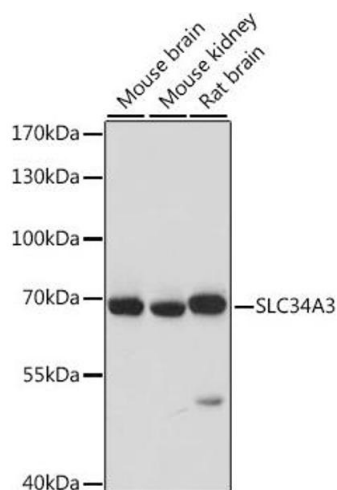
Target:	SLC34A3
Alternative Name:	SLC34A3 ( <a href="#">SLC34A3 Products</a> )
Background:	This gene encodes a member of SLC34A transporter family of proteins, and is expressed primarily in the kidney. It is involved in transporting phosphate into cells via sodium cotransport in the renal brush border membrane, and contributes to the maintenance of inorganic phosphate concentration in the kidney. Mutations in this gene are associated with hereditary hypophosphatemic rickets with hypercalciuria. Alternatively spliced transcript variants varying in the 5' UTR have been found for this gene.,SLC34A3;HHRH;NPT1lc,Cancer,Signal Transduction,Endocrine & Metabolism,SLC34A3
Molecular Weight:	63kDa
Gene ID:	142680
UniProt:	<a href="#">Q8N130</a>

## Application Details

Application Notes:	WB,1:500 - 1:2000
Restrictions:	For Research Use only

## Handling

Format:	Liquid
Buffer:	PBS with 0.02 % sodium azide,50 % glycerol, pH 7.3.
Preservative:	Sodium azide
Precaution of Use:	This product contains Sodium azide: a POISONOUS AND HAZARDOUS SUBSTANCE which should be handled by trained staff only.
Storage:	-20 °C
Storage Comment:	Store at -20°C. Avoid freeze / thaw cycles.



Western Blotting

**Image 1.** Western blot analysis of extracts of various cell lines, using SLC34 antibody (ABIN7270451) at 1:1000 dilution. Secondary antibody: HRP Goat Anti-Rabbit IgG (H+L) (ABIN1684268 and ABIN3020597) at 1:10000 dilution. Lysates/proteins: 25 µg per lane. Blocking buffer: 3 % nonfat dry milk in TBST. Detection: ECL Basic Kit (RM00020). Exposure time: 10s.