



[Go to Product page](#)

Datasheet for ABIN7270452
anti-SLC35D3 antibody (AA 310-390)

1 Image

Overview

Quantity:	100 µL
Target:	SLC35D3
Binding Specificity:	AA 310-390
Reactivity:	Human
Host:	Rabbit
Clonality:	Polyclonal
Conjugate:	This SLC35D3 antibody is un-conjugated
Application:	Western Blotting (WB)

Product Details

Purpose:	SLC35D3 Rabbit pAb
Immunogen:	Recombinant fusion protein containing a sequence corresponding to amino acids 310-390 of human SLC35D3 (NP_001008783.1).
Sequence:	NYEDLEAQPR GEEAQLSGDQ LPFVMEELPG EGGNGRSEGG EAAGGPAQES RQEVRGSPRG VPLVAGSSEE GSRRSLKDAY L
Isotype:	IgG
Cross-Reactivity:	Human
Characteristics:	Polyclonal Antibodies
Purification:	Affinity purification

Target Details

Target:	SLC35D3
Alternative Name:	SLC35D3 (SLC35D3 Products)
Background:	May play a role in hemostasis as a regulator of the biosynthesis of platelet-dense granules.,FRCL1,SLC35D3,Cancer,Signal Transduction,Endocrine & Metabolism,SLC35D3
Gene ID:	340146
UniProt:	Q5M8T2

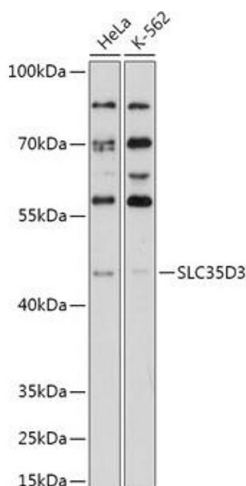
Application Details

Application Notes:	WB,1:500 - 1:2000
Restrictions:	For Research Use only

Handling

Format:	Liquid
Buffer:	PBS with 0.02 % sodium azide,50 % glycerol, pH 7.3.
Preservative:	Sodium azide
Precaution of Use:	This product contains Sodium azide: a POISONOUS AND HAZARDOUS SUBSTANCE which should be handled by trained staff only.
Storage:	-20 °C
Storage Comment:	Store at -20°C. Avoid freeze / thaw cycles.

Images



Western Blotting

Image 1. Western blot analysis of extracts of various cell lines, using SLC35D3 antibody (ABIN7270452) at 1:1000 dilution. Secondary antibody: HRP Goat Anti-Rabbit IgG (H+L) (ABIN1684268 and ABIN3020597) at 1:10000 dilution. Lysates/proteins: 25 µg per lane. Blocking buffer: 3 % nonfat dry milk in TBST. Detection: ECL Enhanced Kit (RM00021). Exposure time: 90s.