

Datasheet for ABIN7270465
anti-SLC46A2 antibody (AA 1-110)



[Go to Product page](#)

1 Image

Overview

Quantity:	100 µL
Target:	SLC46A2
Binding Specificity:	AA 1-110
Reactivity:	Human
Host:	Rabbit
Clonality:	Polyclonal
Conjugate:	This SLC46A2 antibody is un-conjugated
Application:	Western Blotting (WB)

Product Details

Purpose:	SLC46A2 Rabbit pAb
Immunogen:	Recombinant fusion protein containing a sequence corresponding to amino acids 1-110 of human SLC46A2 (NP_149040.3).
Sequence:	MSPEVTCPRR GHLPRFHPRT WVEPVVASSQ VAASLYDAGL LLVVKASYGT GGSSNHSASP SPRGALEDQQ QRAISNFYII YNLVVGLSPL LSAYGLGWLS DRYHRKISIC
Isotype:	IgG
Cross-Reactivity:	Human, Mouse
Characteristics:	Polyclonal Antibodies
Purification:	Affinity purification

Target Details

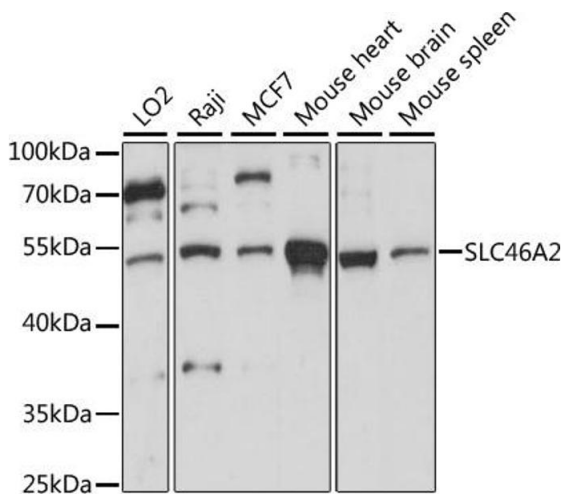
Target:	SLC46A2
Alternative Name:	SLC46A2 (SLC46A2 Products)
Background:	May act as a transporter.,SLC46A2,Ly110,TSCOT,Signal Transduction,Endocrine & Metabolism,SLC46A2
Molecular Weight:	51kDa
Gene ID:	57864
UniProt:	Q9BY10

Application Details

Application Notes:	WB,1:200 - 1:2000
Restrictions:	For Research Use only

Handling

Format:	Liquid
Buffer:	PBS with 0.02 % sodium azide,50 % glycerol, pH 7.3.
Preservative:	Sodium azide
Precaution of Use:	This product contains Sodium azide: a POISONOUS AND HAZARDOUS SUBSTANCE which should be handled by trained staff only.
Storage:	-20 °C
Storage Comment:	Store at -20°C. Avoid freeze / thaw cycles.



Western Blotting

Image 1. Western blot analysis of extracts of various cell lines, using SLC46 antibody (ABIN7270465) at 1:1000 dilution. Secondary antibody: HRP Goat Anti-Rabbit IgG (H+L) (ABIN1684268 and ABIN3020597) at 1:10000 dilution. Lysates/proteins: 25 µg per lane. Blocking buffer: 3 % nonfat dry milk in TBST. Detection: ECL Basic Kit (RM00020). Exposure time: 30s.