



Datasheet for ABIN7270468
anti-SLC5A12 antibody (AA 200-280)



[Go to Product page](#)

1 Image

Overview

Quantity:	100 µL
Target:	SLC5A12
Binding Specificity:	AA 200-280
Reactivity:	Human
Host:	Rabbit
Clonality:	Polyclonal
Conjugate:	This SLC5A12 antibody is un-conjugated
Application:	Western Blotting (WB)

Product Details

Purpose:	SLC5A12 Rabbit pAb
Immunogen:	Recombinant fusion protein containing a sequence corresponding to amino acids 200-280 of human SLC5A12 (NP_848593.2).
Sequence:	LIQGSTHAGG FHNVLEQSTN GSRLHIFDFD VDPLRRHTFW TITVGGTFTW LGIYGVNQST IQRCISCKTE KHAKLALYFN L
Isotype:	IgG
Cross-Reactivity:	Human
Characteristics:	Polyclonal Antibodies
Purification:	Affinity purification

Target Details

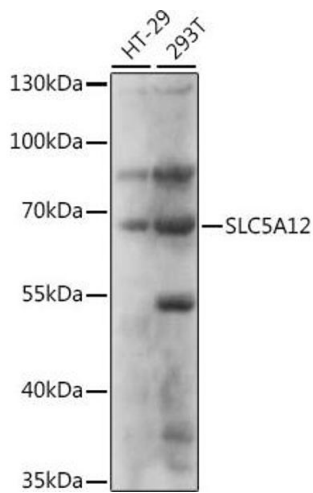
Target:	SLC5A12
Alternative Name:	SLC5A12 (SLC5A12 Products)
Background:	Normal blood lactate is maintained at about 1.5 mM, and little filtered lactate is excreted in urine. Reabsorption of lactate is mediated by the low-affinity Na(+)-coupled lactate transporter SLC5A12 in the initial part of the proximal tubule and by the high-affinity Na(+)-coupled lactate transporter SLC5A8 (MIM 608044) in the distal proximal tubule.,SLC5A12,SMCT2,Cancer,Signal Transduction,Endocrine & Metabolism,Neuroscience,SLC5A12
Molecular Weight:	44kDa/67kDa
Gene ID:	159963
UniProt:	Q1EHB4

Application Details

Application Notes:	WB,1:500 - 1:2000
Restrictions:	For Research Use only

Handling

Format:	Liquid
Buffer:	PBS with 0.02 % sodium azide,50 % glycerol, pH 7.3.
Preservative:	Sodium azide
Precaution of Use:	This product contains Sodium azide: a POISONOUS AND HAZARDOUS SUBSTANCE which should be handled by trained staff only.
Storage:	-20 °C
Storage Comment:	Store at -20°C. Avoid freeze / thaw cycles.



Western Blotting

Image 1. Western blot analysis of extracts of various cell lines, using SLC5 antibody (ABIN7270468) at 1:1000 dilution. Secondary antibody: HRP Goat Anti-Rabbit IgG (H+L) (ABIN1684268 and ABIN3020597) at 1:10000 dilution. Lysates/proteins: 25 µg per lane. Blocking buffer: 3 % nonfat dry milk in TBST. Detection: ECL Basic Kit (RM00020). Exposure time: 5s.