

Datasheet for ABIN7270472

## anti-Solute Carrier Family 52 (Riboflavin Transporter), Member 3 (SLC52A3) (AA 200-300) antibody



[Go to Product page](#)

### 1 Image

#### Overview

Quantity:	100 µL
Target:	Solute Carrier Family 52 (Riboflavin Transporter), Member 3 (SLC52A3)
Binding Specificity:	AA 200-300
Reactivity:	Human
Host:	Rabbit
Clonality:	Polyclonal
Conjugate:	Un-conjugated
Application:	Western Blotting (WB)

#### Product Details

Purpose:	SLC52A3 Rabbit pAb
Immunogen:	A synthetic peptide corresponding to a sequence within amino acids 200-300 of human SLC52A3 (NP_212134.3).
Sequence:	PGMEAPLSHL ESRYPALHFS PLVFFLLLSI MMACCLVAFF VLQRQPRCWE ASVEDLLNDQ VTLHSIRPRE ENDLGPAGTV DSSQGQGYLE EKAAPCCPAH L
Isotype:	IgG
Cross-Reactivity:	Mouse
Characteristics:	Polyclonal Antibodies
Purification:	Affinity purification

## Target Details

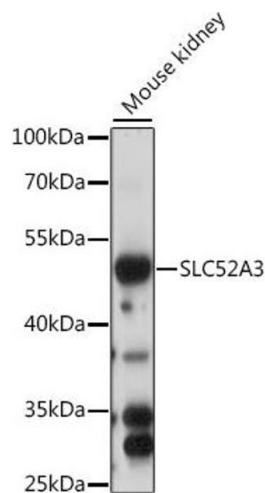
Target:	Solute Carrier Family 52 (Riboflavin Transporter), Member 3 (SLC52A3)
Alternative Name:	SLC52A3 ( <a href="#">SLC52A3 Products</a> )
Background:	This gene encodes a riboflavin transporter protein that is strongly expressed in the intestine and likely plays a role in intestinal absorption of riboflavin. The protein is predicted to have eleven transmembrane domains and a cell surface localization signal in the C-terminus. Mutations at this locus have been associated with Brown-Vialetto-Van Laere syndrome and Fazio-Londe disease.,SLC52A3,BVLS,BVLS1,C20orf54,RFT2,RFVT3,bA371L19.1,hRFT2,Cancer,Signal Transduction,Endocrine & Metabolism,SLC52A3
Molecular Weight:	45kDa/50kDa
Gene ID:	113278
UniProt:	<a href="#">Q9NQ40</a>
Pathways:	<a href="#">Sensory Perception of Sound</a>

## Application Details

Application Notes:	WB,1:500 - 1:2000
Restrictions:	For Research Use only

## Handling

Format:	Liquid
Buffer:	PBS with 0.02 % sodium azide,50 % glycerol, pH 7.3.
Preservative:	Sodium azide
Precaution of Use:	This product contains Sodium azide: a POISONOUS AND HAZARDOUS SUBSTANCE which should be handled by trained staff only.
Storage:	-20 °C
Storage Comment:	Store at -20°C. Avoid freeze / thaw cycles.



#### Western Blotting

**Image 1.** Western blot analysis of extracts of mouse kidney, using SLC52 antibody (ABIN7270472) at 1:1000 dilution. Secondary antibody: HRP Goat Anti-Rabbit IgG (H+L) (ABIN1684268 and ABIN3020597) at 1:10000 dilution. Lysates/proteins: 25 µg per lane. Blocking buffer: 3 % nonfat dry milk in TBST. Detection: ECL Basic Kit (RM00020). Exposure time: 60s.