

Datasheet for ABIN7270479
anti-SLC7A8 antibody (AA 150-250)[Go to Product page](#)

1 Image

Overview

Quantity:	100 µL
Target:	SLC7A8
Binding Specificity:	AA 150-250
Reactivity:	Human
Host:	Rabbit
Clonality:	Polyclonal
Conjugate:	This SLC7A8 antibody is un-conjugated
Application:	Western Blotting (WB)

Product Details

Purpose:	SLC7A8 Rabbit pAb
Immunogen:	A synthetic peptide corresponding to a sequence within amino acids 150-250 of human SLC7A8 (NP_036376.2).
Sequence:	LFPTCFPPES GLRLAAICL LLLTWVNCSS VRWATRVQDI FTAGKLLALA LIIIMGIVQI CKGEYFWLEP KNAFENFQEP DIGLVALAFL QGSFAYGGWN F
Isotype:	IgG
Cross-Reactivity:	Human
Characteristics:	Polyclonal Antibodies
Purification:	Affinity purification

Target Details

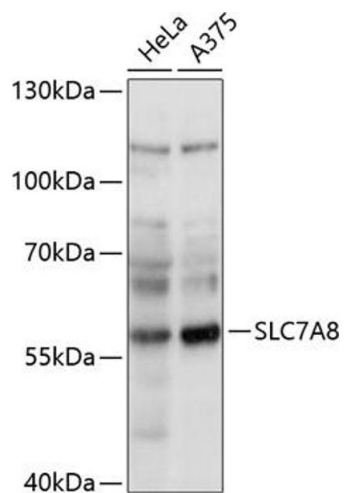
Target:	SLC7A8
Alternative Name:	SLC7A8 (SLC7A8 Products)
Background:	<p>Sodium-independent, high-affinity transport of small and large neutral amino acids such as alanine, serine, threonine, cysteine, phenylalanine, tyrosine, leucine, arginine and tryptophan, when associated with SLC3A2/4F2hc. Acts as an amino acid exchanger. Has higher affinity for L-phenylalanine than LAT1 but lower affinity for glutamine and serine. L-alanine is transported at physiological concentrations. Plays a role in basolateral (reabsorption of neutral amino acids. Involved in the uptake of methylmercury (MeHg when administered as the L-cysteine or D,L-homocysteine complexes, and hence plays a role in metal ion homeostasis and toxicity. Involved in the cellular activity of small molecular weight nitrosothiols, via the stereoselective transport of L-nitrosocysteine (L-CNSO across the transmembrane. Plays an essential role in the reabsorption of neutral amino acids from the epithelial cells to the bloodstream in the kidney.,SLC7A8,LAT2,LPI-PC1,Cancer,Signal Transduction,Endocrine & Metabolism,Amino acid metabolism,Neuroscience,SLC7A8</p>
Molecular Weight:	34kDa/37kDa/48kDa/58kDa
Gene ID:	23428
UniProt:	Q9UHI5

Application Details

Application Notes:	WB,1:500 - 1:2000
Restrictions:	For Research Use only

Handling

Format:	Liquid
Buffer:	PBS with 0.02 % sodium azide,50 % glycerol, pH 7.3.
Preservative:	Sodium azide
Precaution of Use:	This product contains Sodium azide: a POISONOUS AND HAZARDOUS SUBSTANCE which should be handled by trained staff only.
Storage:	-20 °C
Storage Comment:	Store at -20°C. Avoid freeze / thaw cycles.



Western Blotting

Image 1. Western blot analysis of extracts of various cell lines, using SLC7 antibody (ABIN7270479) at 1:1000 dilution. Secondary antibody: HRP Goat Anti-Rabbit IgG (H+L) (ABIN1684268 and ABIN3020597) at 1:10000 dilution. Lysates/proteins: 25 µg per lane. Blocking buffer: 3 % nonfat dry milk in TBST. Detection: ECL Basic Kit (RM00020). Exposure time: 10s.