



[Go to Product page](#)

Datasheet for ABIN7270481
anti-SLC7A2 antibody (C-Term)

5 Images

Overview

Quantity:	100 µL
Target:	SLC7A2
Binding Specificity:	C-Term
Reactivity:	Human
Host:	Rabbit
Clonality:	Polyclonal
Conjugate:	This SLC7A2 antibody is un-conjugated
Application:	Immunohistochemistry (IHC), Western Blotting (WB)

Product Details

Purpose:	SLC7A2 Rabbit pAb
Immunogen:	A synthetic peptide corresponding to a sequence within amino acids 500 to the C-terminus of human SLC7A2 (NP_001008539.3).
Sequence:	FLAFLVLGLS VLTTYGVHAI TRLEAWSLAL LALFLVLFVA IVLTIWRQPQ NQQKVAFMVP FLPFLPAFSI LVNIYLMVQL SADTWVRFISI WMAIGFLIYF SYGIRHSLEG HLRDENNEED AYPDNVHAAA EEKSAIQAND HHPNRLSSPF IFHEKTSEF
Isotype:	IgG
Cross-Reactivity:	Human, Mouse, Rat
Characteristics:	Polyclonal Antibodies
Purification:	Affinity purification

Target Details

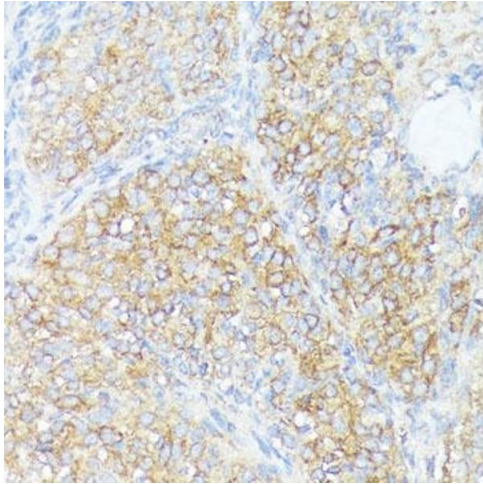
Target:	SLC7A2
Alternative Name:	SLC7A2 (SLC7A2 Products)
Background:	The protein encoded by this gene is a cationic amino acid transporter and a member of the APC (amino acid-polyamine-organocation) family of transporters. The encoded membrane protein is responsible for the cellular uptake of arginine, lysine and ornithine. Three transcript variants encoding different isoforms have been found for this gene.,SLC7A2,ATRC2,CAT2,HCAT2,Signal Transduction,Endocrine & Metabolism,Amino acid metabolism,SLC7A2
Molecular Weight:	71kDa/75kDa/76kDa
Gene ID:	6542
UniProt:	P52569

Application Details

Application Notes:	WB,1:500 - 1:2000,IHC,1:50 - 1:100
Restrictions:	For Research Use only

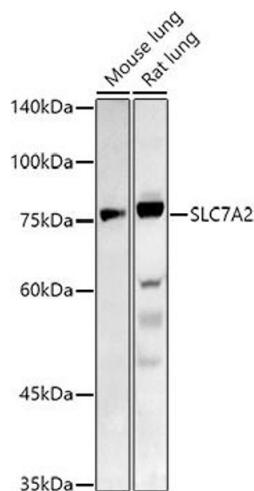
Handling

Format:	Liquid
Buffer:	PBS with 0.02 % sodium azide,50 % glycerol, pH 7.3.
Preservative:	Sodium azide
Precaution of Use:	This product contains Sodium azide: a POISONOUS AND HAZARDOUS SUBSTANCE which should be handled by trained staff only.
Storage:	-20 °C
Storage Comment:	Store at -20°C. Avoid freeze / thaw cycles.



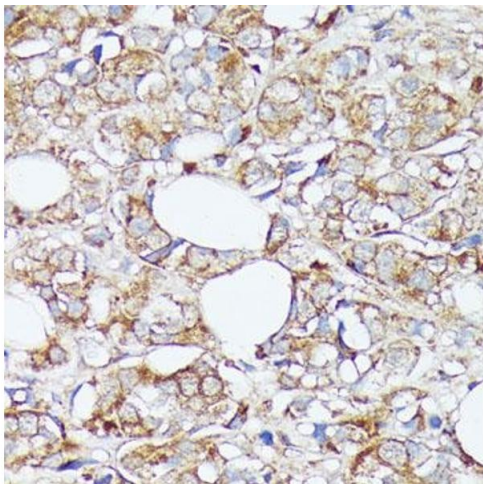
Immunohistochemistry

Image 1. Immunohistochemistry of paraffin-embedded rat ovary using SLC7 antibody (ABIN7270481) at dilution of 1:100 (40x lens). Perform microwave antigen retrieval with 10 mM PBS buffer pH 7.2 before commencing with IHC staining protocol.



Western Blotting

Image 2. Western blot analysis of extracts of various cell lines, using SLC7 antibody (ABIN7270481) at 1:1000 dilution. Secondary antibody: HRP Goat Anti-Rabbit IgG (H+L) (ABIN1684268 and ABIN3020597) at 1:10000 dilution. Lysates/proteins: 25 µg per lane. Blocking buffer: 3 % nonfat dry milk in TBST. Detection: ECL Basic Kit (RM00020). Exposure time: 180s.



Immunohistochemistry

Image 3. Immunohistochemistry of paraffin-embedded human mammary cancer using SLC7 antibody (ABIN7270481) at dilution of 1:100 (40x lens). Perform microwave antigen retrieval with 10 mM PBS buffer pH 7.2 before commencing with IHC staining protocol.

Please check the [product details page](#) for more images. Overall 5 images are available for ABIN7270481.