



Datasheet for ABIN7270482
anti-SLC7A11 antibody



[Go to Product page](#)

2 Images

Overview

Quantity:	100 µL
Target:	SLC7A11
Reactivity:	Human
Host:	Rabbit
Clonality:	Monoclonal
Conjugate:	This SLC7A11 antibody is un-conjugated
Application:	Western Blotting (WB)

Product Details

Purpose:	SLC7A11/xCT Rabbit mAb
Immunogen:	A synthesized peptide derived from human SLC7A11/xCT
Isotype:	IgG
Cross-Reactivity:	Human
Characteristics:	Monoclonal Antibodies
Purification:	Affinity purification

Target Details

Target:	SLC7A11
Alternative Name:	SLC7A11 (SLC7A11 Products)
Background:	This gene encodes a member of a heteromeric, sodium-independent, anionic amino acid

Target Details

transport system that is highly specific for cysteine and glutamate. In this system, designated Xc(-), the anionic form of cysteine is transported in exchange for glutamate. This protein has been identified as the predominant mediator of Kaposi sarcoma-associated herpesvirus fusion and entry permissiveness into cells. Also, increased expression of this gene in primary gliomas (compared to normal brain tissue) was associated with increased glutamate secretion via the XCT channels, resulting in neuronal cell death. [provided by RefSeq, Sep 2011],CCBR1, xCT,Amino acid metabolism,Cancer,Cell Biology & Developmental Biology,Endocrine & Metabolism,Signal Transduction,SLC7A11

Molecular Weight: 55kDa

Gene ID: 23657

UniProt: [Q9UPY5](#)

Application Details

Application Notes: WB,1:500 - 1:2000

Restrictions: For Research Use only

Handling

Format: Liquid

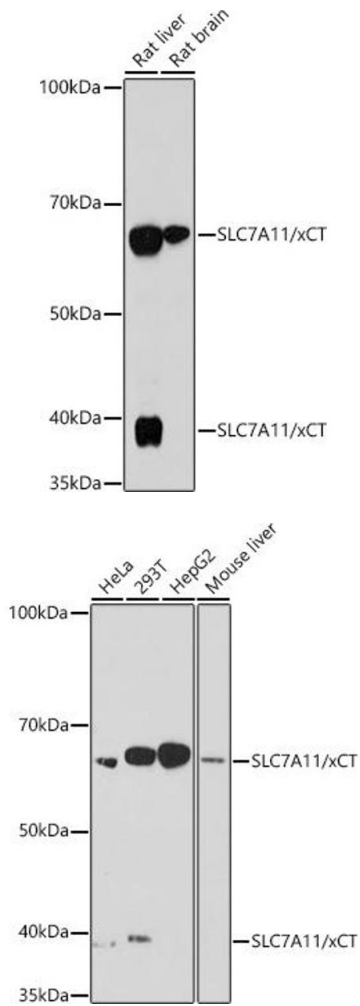
Buffer: PBS with 0.02 % sodium azide,0.05 % BSA,50 % glycerol, pH 7.3.

Preservative: Sodium azide

Precaution of Use: This product contains Sodium azide: a POISONOUS AND HAZARDOUS SUBSTANCE which should be handled by trained staff only.

Storage: -20 °C

Storage Comment: Store at -20°C. Avoid freeze / thaw cycles.



Western Blotting

Image 1. Western blot analysis of extracts of various cell lines, using SLC7/xCT antibody (ABIN7270482) at 1:1000 dilution. Secondary antibody: HRP Goat Anti-Rabbit IgG (H+L) (ABIN1684268 and ABIN3020597) at 1:10000 dilution. Lysates/proteins: 25 µg per lane. Blocking buffer: 3 % nonfat dry milk in TBST. Detection: ECL Enhanced Kit (RM00021). Exposure time: 180s.

Western Blotting

Image 2. Western blot analysis of extracts of various cell lines, using SLC7/xCT antibody (ABIN7270482) at 1:1000 dilution. Secondary antibody: HRP Goat Anti-Rabbit IgG (H+L) (ABIN1684268 and ABIN3020597) at 1:10000 dilution. Lysates/proteins: 25 µg per lane. Blocking buffer: 3 % nonfat dry milk in TBST. Detection: ECL Basic Kit (RM00020). Exposure time: 180s.