



[Go to Product page](#)

Datasheet for ABIN7270487  
**anti-SLC9A3R2 antibody (AA 180-300)**

1 Image

Overview

Quantity:	100 µL
Target:	SLC9A3R2
Binding Specificity:	AA 180-300
Reactivity:	Human
Host:	Rabbit
Clonality:	Polyclonal
Conjugate:	This SLC9A3R2 antibody is un-conjugated
Application:	Western Blotting (WB)

Product Details

Purpose:	SLC9A3R2 Rabbit pAb
Immunogen:	Recombinant fusion protein containing a sequence corresponding to amino acids 180-300 of human SLC9A3R2 (NP_001123484).
Sequence:	DPGSPAARSG LRAQDRLEIV NGQNVEGLRH AEVVASIKAR EDEARLLVVD PETDEHFKRL RVTPTEEHVE GPLPSPVTNG TSPAQLNGGS ACSSRSDLPG SDKDTEGSA WKQDPFQESG L
Isotype:	IgG
Cross-Reactivity:	Human
Characteristics:	Polyclonal Antibodies
Purification:	Affinity purification

## Target Details

---

Target:	SLC9A3R2
Alternative Name:	SLC9A3R2 ( <a href="#">SLC9A3R2 Products</a> )
Background:	<p>This gene encodes a member of the NHERF family of PDZ scaffolding proteins. These proteins mediate many cellular processes by binding to and regulating the membrane expression and protein-protein interactions of membrane receptors and transport proteins. The encoded protein plays a role in intestinal sodium absorption by regulating the activity of the sodium/hydrogen exchanger 3, and may also regulate the cystic fibrosis transmembrane regulator (CFTR) ion channel. Alternatively spliced transcript variants encoding multiple isoforms have been observed for this gene. [provided by RefSeq, Nov 2011],E3KARP,NHE3RF2,NHERF-2,NHERF2,OCTS2,SIP-1,SIP1,TKA-1,SLC9A3R2,Cancer,Signal Transduction,Cell Biology &amp; Developmental Biology,Cytoskeleton,Microfilaments,Endocrine &amp; Metabolism,SLC9A3R2</p>
Gene ID:	9351
UniProt:	<a href="#">Q15599</a>

## Application Details

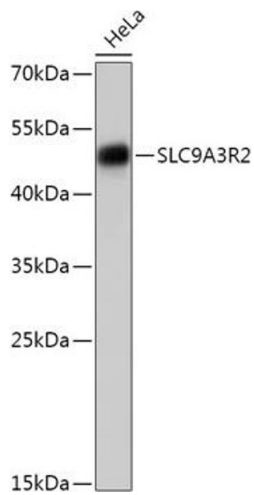
---

Application Notes:	WB,1:500 - 1:2000
Restrictions:	For Research Use only

## Handling

---

Format:	Liquid
Buffer:	PBS with 0.02 % sodium azide,50 % glycerol, pH 7.3.
Preservative:	Sodium azide
Precaution of Use:	This product contains Sodium azide: a POISONOUS AND HAZARDOUS SUBSTANCE which should be handled by trained staff only.
Storage:	-20 °C
Storage Comment:	Store at -20°C. Avoid freeze / thaw cycles.



### Western Blotting

**Image 1.** Western blot analysis of extracts of HeLa cells, using SLC9R2 antibody (ABIN7270487) at 1:1000 dilution. Secondary antibody: HRP Goat Anti-Rabbit IgG (H+L) (ABIN1684268 and ABIN3020597) at 1:10000 dilution. Lysates/proteins: 25 µg per lane. Blocking buffer: 3 % nonfat dry milk in TBST. Detection: ECL Basic Kit (RM00020). Exposure time: 10s.