



Datasheet for ABIN7270488
anti-SLC01B1 antibody (AA 597-691)



[Go to Product page](#)

1 Image

Overview

Quantity:	100 µL
Target:	SLC01B1
Binding Specificity:	AA 597-691
Reactivity:	Human
Host:	Rabbit
Clonality:	Polyclonal
Conjugate:	This SLC01B1 antibody is un-conjugated
Application:	Western Blotting (WB)

Product Details

Purpose:	SLC01B1 Rabbit pAb
Immunogen:	Recombinant fusion protein containing a sequence corresponding to amino acids 597-691 of human SLC01B1 (NP_006437.3).
Sequence:	TTCIKWSTNN CGTRGSCRTY NSTSFSRVYL GLSSMLRVSS LVLVYIILIYA MKKKYQEKDI NAENGSVMD EANLESLNKN KHFVPSAGAD SETHC
Isotype:	IgG
Cross-Reactivity:	Human
Characteristics:	Polyclonal Antibodies
Purification:	Affinity purification

Target Details

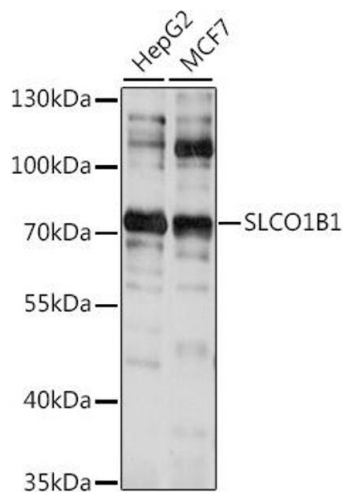
Target:	SLC01B1
Alternative Name:	SLC01B1 (SLC01B1 Products)
Background:	<p>This gene encodes a liver-specific member of the organic anion transporter family. The encoded protein is a transmembrane receptor that mediates the sodium-independent uptake of numerous endogenous compounds including bilirubin, 17-beta-glucuronosyl estradiol and leukotriene C4. This protein is also involved in the removal of drug compounds such as statins, bromosulfophthalein and rifampin from the blood into the hepatocytes. Polymorphisms in the gene encoding this protein are associated with impaired transporter function.,SLC01B1,HBLRR,LST-1,LST1,OATP-C,OATP1B1,OATP2,OATPC,SLC21A6,Cancer,Endocrine & Metabolism,Lipid Metabolism,SLC01B1</p>
Molecular Weight:	76kDa
Gene ID:	10599
UniProt:	Q9Y6L6

Application Details

Application Notes:	WB,1:500 - 1:2000
Restrictions:	For Research Use only

Handling

Format:	Liquid
Buffer:	PBS with 0.02 % sodium azide,50 % glycerol, pH 7.3.
Preservative:	Sodium azide
Precaution of Use:	This product contains Sodium azide: a POISONOUS AND HAZARDOUS SUBSTANCE which should be handled by trained staff only.
Storage:	-20 °C
Storage Comment:	Store at -20°C. Avoid freeze / thaw cycles.



Western Blotting

Image 1. Western blot analysis of extracts of various cell lines, using SLCO1B1 antibody (ABIN7270488) at 1:1000 dilution. Secondary antibody: HRP Goat Anti-Rabbit IgG (H+L) (ABIN1684268 and ABIN3020597) at 1:10000 dilution. Lysates/proteins: 25 µg per lane. Blocking buffer: 3 % nonfat dry milk in TBST. Detection: ECL Basic Kit (RM00020). Exposure time: 10s.