

Datasheet for ABIN7270505

anti-SP1 antibody

6 Images

[Go to Product page](#)

Overview

Quantity:	100 µL
Target:	SP1
Reactivity:	Human
Host:	Rabbit
Clonality:	Monoclonal
Conjugate:	This SP1 antibody is un-conjugated
Application:	Western Blotting (WB), Immunohistochemistry (IHC), Immunofluorescence (IF), Chromatin Immunoprecipitation (ChIP)

Product Details

Purpose:	SP1 Rabbit mAb
Immunogen:	A synthesized peptide derived from human SP1.
Isotype:	IgG
Cross-Reactivity:	Human, Mouse, Rat
Characteristics:	Monoclonal Antibodies
Purification:	Affinity purification

Target Details

Target:	SP1
Alternative Name:	SP1 (SP1 Products)

Target Details

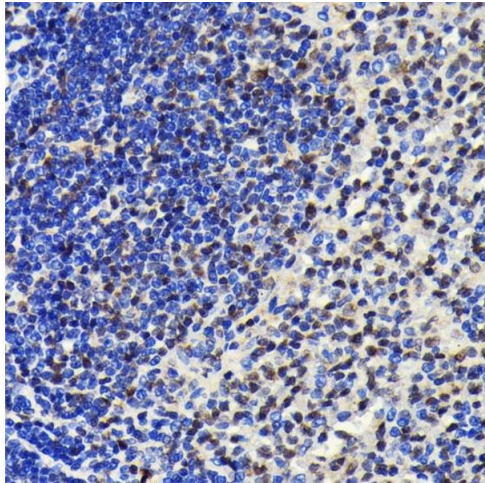
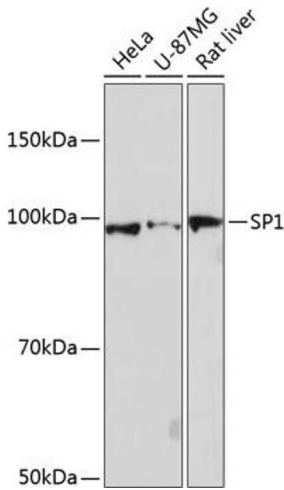
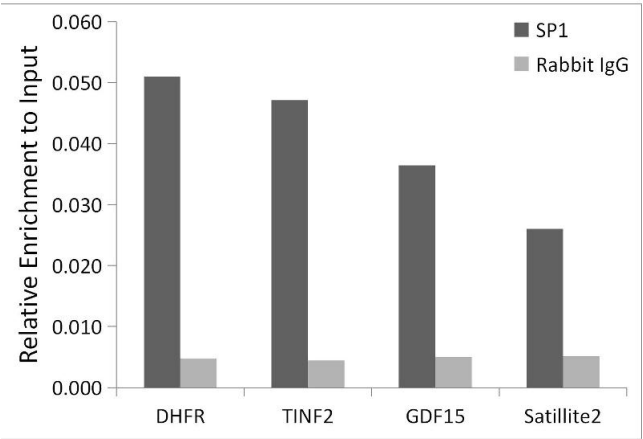
Background:	The protein encoded by this gene is a zinc finger transcription factor that binds to GC-rich motifs of many promoters. The encoded protein is involved in many cellular processes, including cell differentiation, cell growth, apoptosis, immune responses, response to DNA damage, and chromatin remodeling. Post-translational modifications such as phosphorylation, acetylation, glycosylation, and proteolytic processing significantly affect the activity of this protein, which can be an activator or a repressor. Three transcript variants encoding different isoforms have been found for this gene. [provided by RefSeq, Nov 2014],SP1,Endocrine & Metabolism,Epigenetics & Nuclear Signaling,Mitochondrial metabolism,Mitochondrial metabolism_Mitochondrial Biogenesis,Neurodegenerative Diseases,Neuroscience,Nucleotide metabolism,Nucleotide metabolism_Molecular processes,Stem Cells,Transcription Factors,SP1
Molecular Weight:	90kDa
Gene ID:	6667
UniProt:	P08047
Pathways:	Regulation of Lipid Metabolism by PPARalpha, Myometrial Relaxation and Contraction

Application Details

Application Notes:	WB,1:500 - 1:2000,IHC,1:50 - 1:200,IF,1:50 - 1:200,ChIP,1:50 - 1:200
Restrictions:	For Research Use only

Handling

Format:	Liquid
Buffer:	PBS with 0.02 % sodium azide,0.05 % BSA,50 % glycerol, pH 7.3.
Preservative:	Sodium azide
Precaution of Use:	This product contains Sodium azide: a POISONOUS AND HAZARDOUS SUBSTANCE which should be handled by trained staff only.
Storage:	-20 °C
Storage Comment:	Store at -20°C. Avoid freeze / thaw cycles.



Chromatin Immunoprecipitation

Image 1. Chromatin immunoprecipitation analysis of extracts of 293T cells, using SP1 antibody (ABIN7270505) and rabbit IgG. The amount of immunoprecipitated DNA was checked by quantitative PCR. Histogram was constructed by the ratios of the immunoprecipitated DNA to the input.

Western Blotting

Image 2. Western blot analysis of extracts of various cell lines, using SP1 antibody (ABIN7270505) at 1:1000 dilution. Secondary antibody: HRP Goat Anti-Rabbit IgG (H+L) (ABIN1684268 and ABIN3020597) at 1:10000 dilution. Lysates/proteins: 25 µg per lane. Blocking buffer: 3 % nonfat dry milk in TBST. Detection: ECL Basic Kit (RM00020). Exposure time: 90s.

Immunohistochemistry

Image 3. Immunohistochemistry of paraffin-embedded rat spleen using SP1 antibody (ABIN7270505) at dilution of 1:100 (40x lens). Perform microwave antigen retrieval with 10 mM PBS buffer pH 7.2 before commencing with IHC staining protocol.

Please check the [product details page](#) for more images. Overall 6 images are available for ABIN7270505.